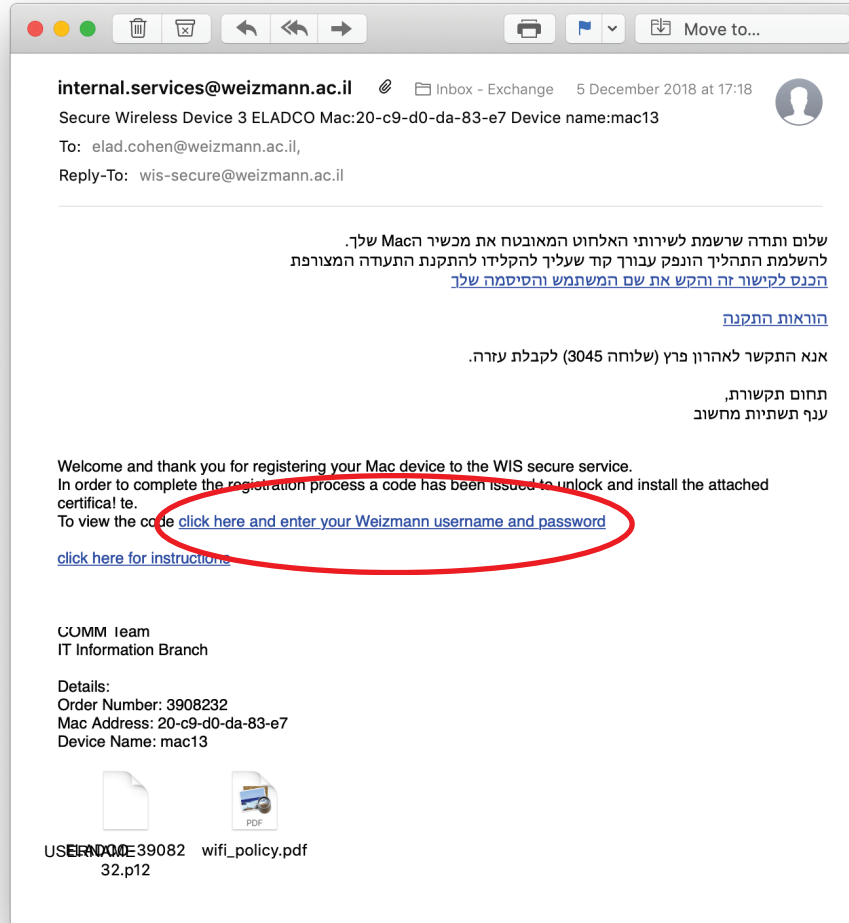


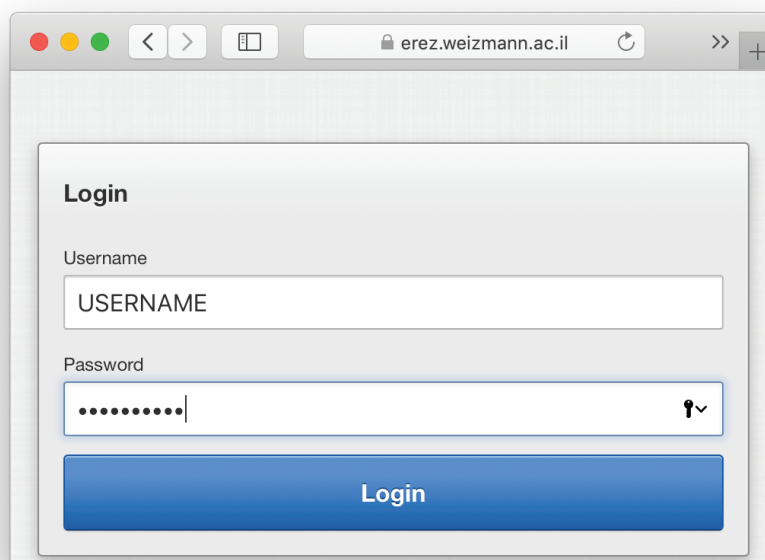


WIS Secure Install on Mac

1. Open the email message you received from Internal Services, and click the link.

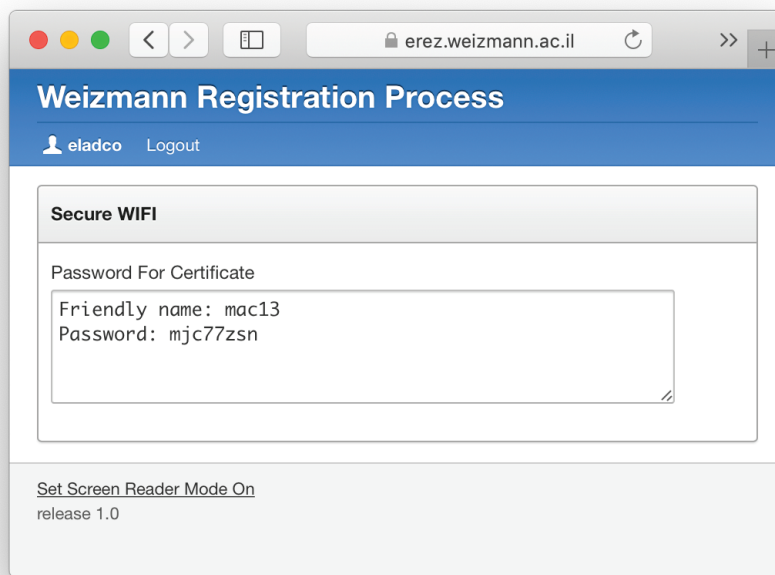


2. Enter your user/password credentials in the browser window.

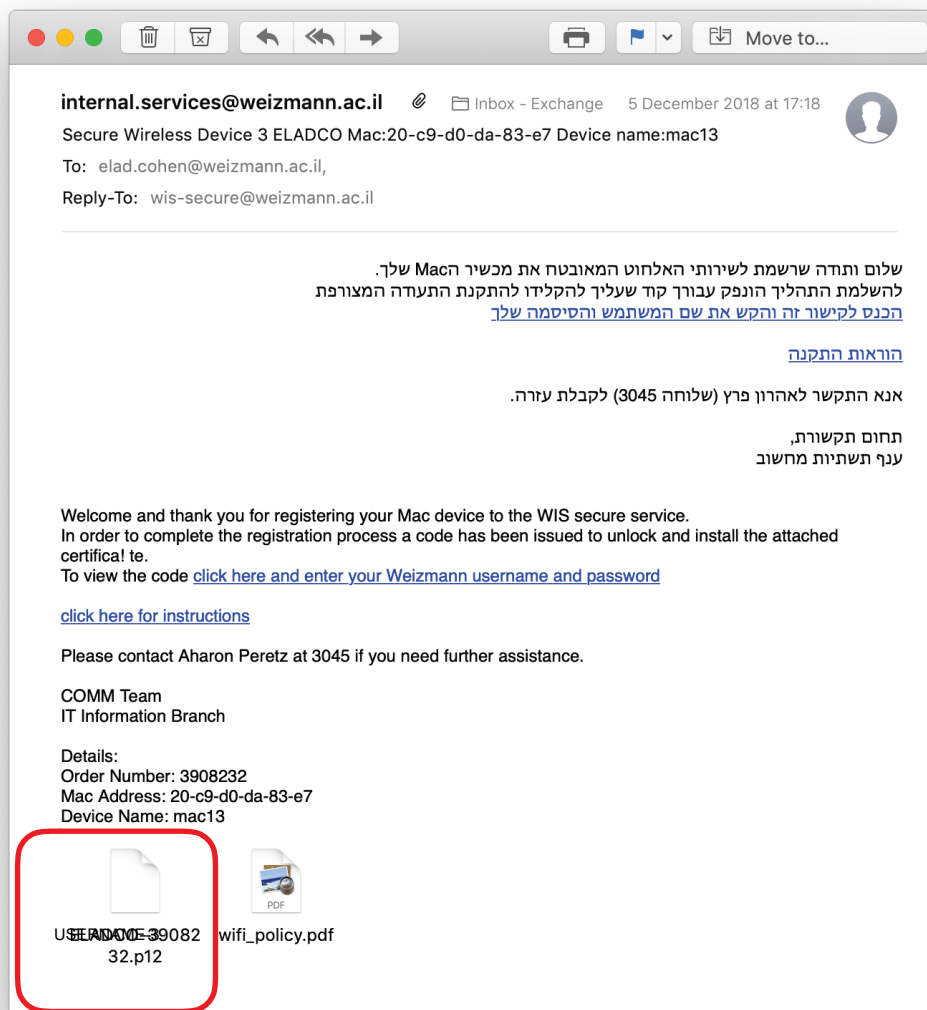




3. Copy the provided password.

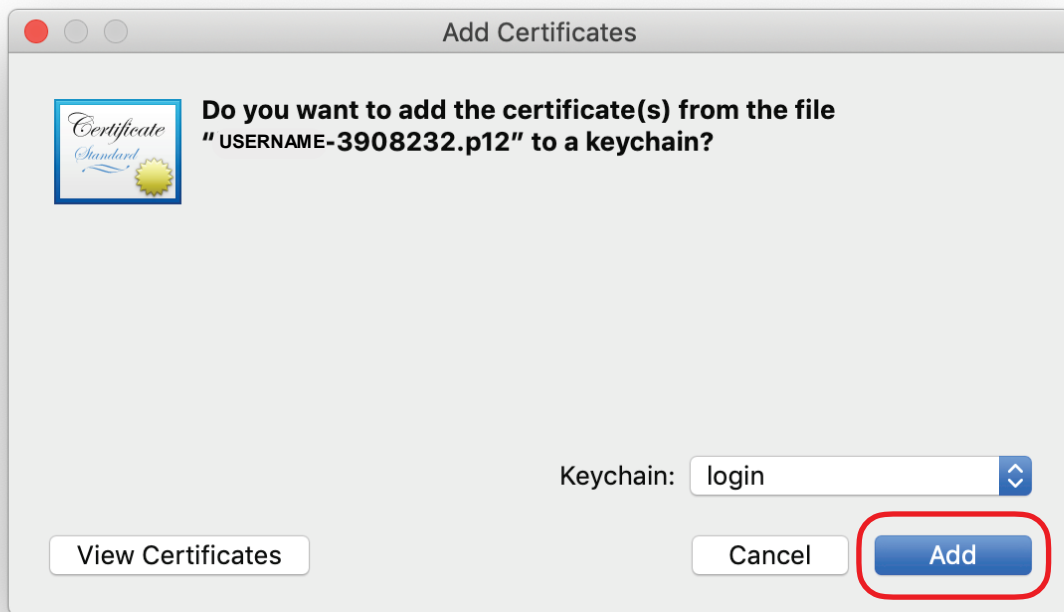


4. Go back to the email, and open the attached file.

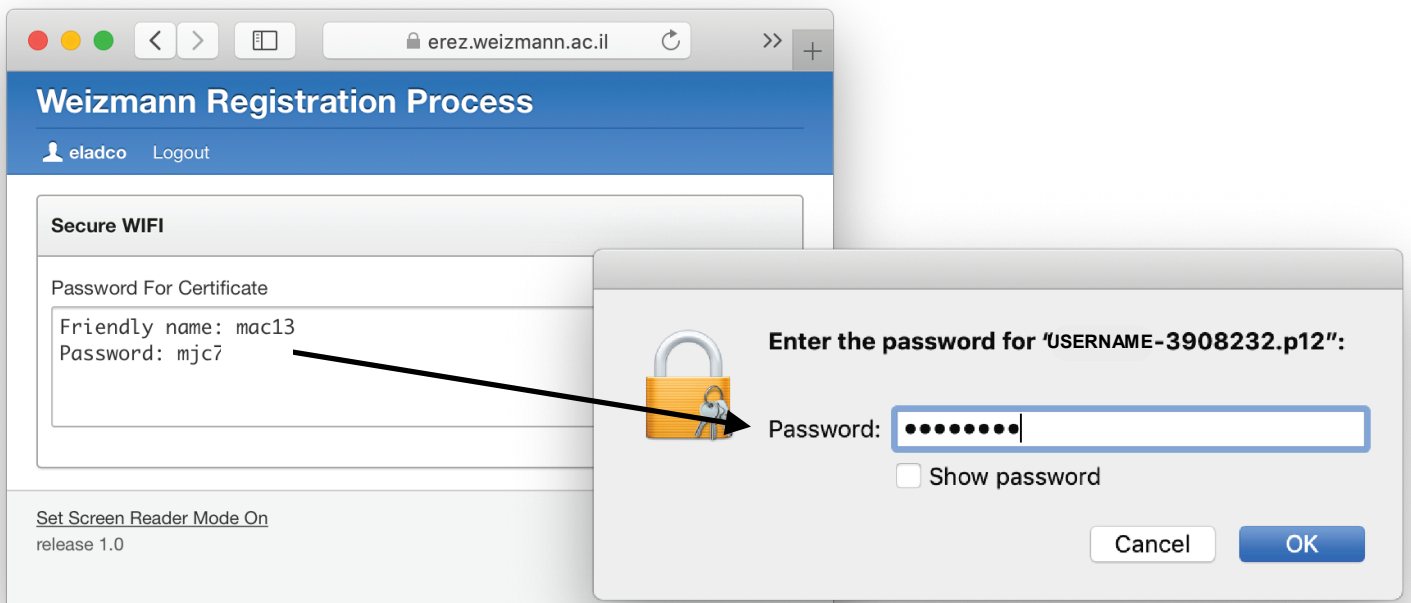




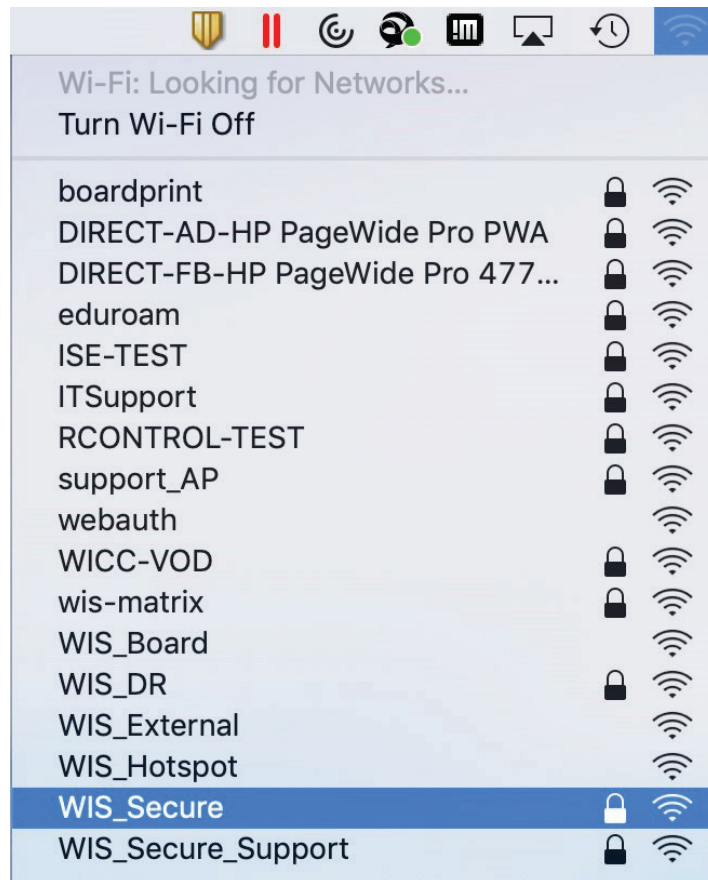
5. Add the certificate to the keychain.



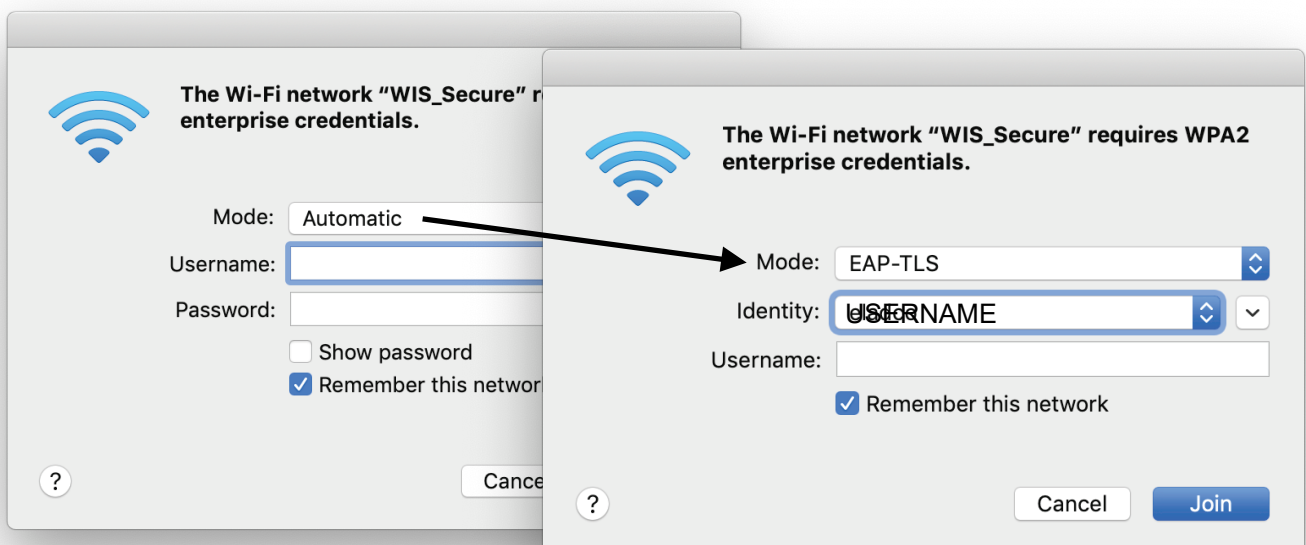
6. Enter the password from step 3.

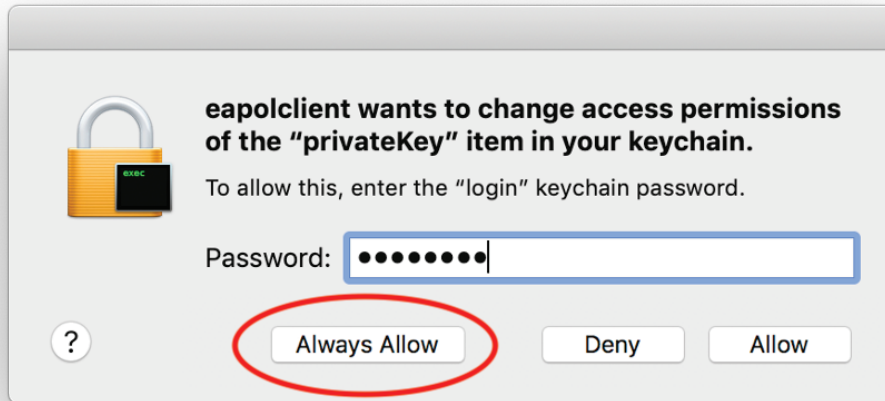


7. You can now connect to **WIS_Secure** from the Wi-Fi menu.

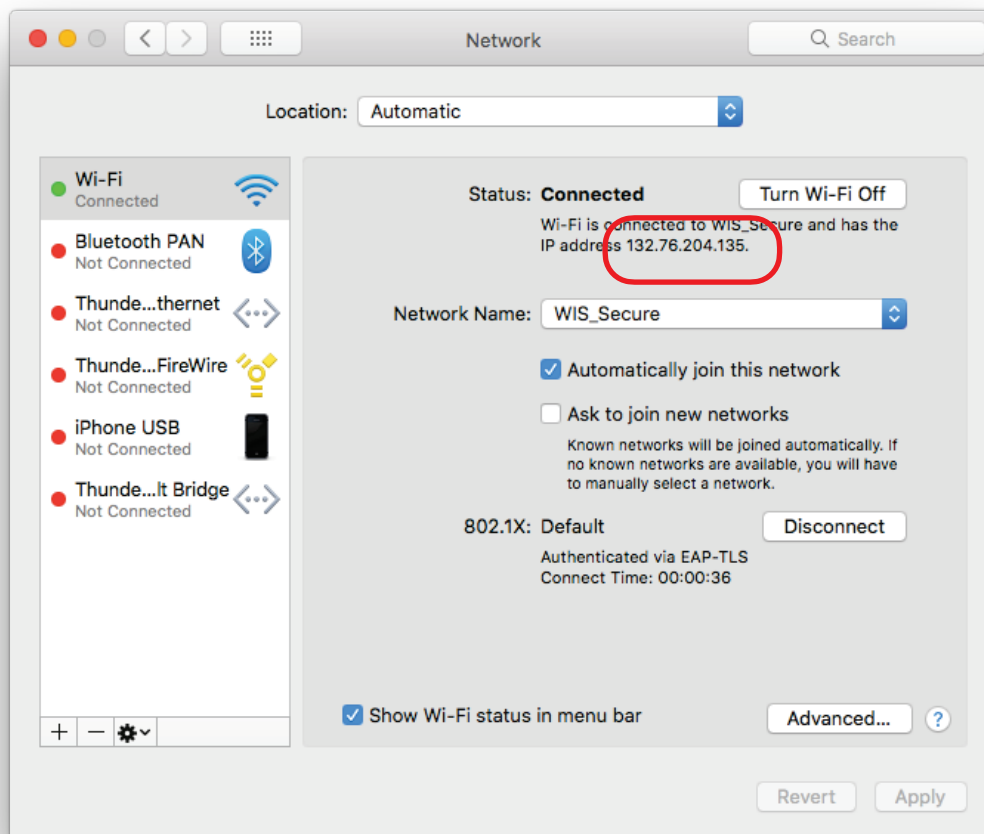


8. Change **Automatic** to **EAP-TLS** in the drop-down menu, and select your username in the identity menu, then click **Join**.





9. Enter the password for your Mac and select **Always Allow**.
10. Enter the password again and select **Allow**.
11. You are now connected to WIS_Secure.
12. You can check that the IP is correct in **System Preferences->Network**.





13. You can prioritize **WIS_Secure** by clicking **Advanced**, and dragging it to the top in the **Preferred Networks** window. Click **OK**, then click **Apply**.

