



Feinberg Graduate School

Graduates 2020



מכון ויצמן למדע
WEIZMANN INSTITUTE OF SCIENCE

Feinberg Graduate School
in The David Lopatie Hall of Graduate Studies

Weizmann Institute of Science, P.O. Box 26, Rehovot 76100, Israel

Phone: + 972-8-934-2924 Fax: + 972-8-934-4114

E-mail: FGS@weizmann.ac.il

www.weizmann.ac.il/pages/he/feinberg-graduate-school

Production: Tal Eizman, Raanan Jacoby, Livnat Mozes, Tamar Morad, Ami Shalit

Design: www.dio-olamot.com



מכון ויצמן למדע
WEIZMANN INSTITUTE OF SCIENCE

Feinberg Graduate School cordially invites you to a
Festive online ceremony
for the conferment of MSc and PhD degrees
and for the awarding of prizes
for academic excellence

Wednesday, September 9, 2020
6:00 p.m.

To view the live screening of the ceremony please click here

מדרשת פיינברג מתכבדת להזמין
לטקס חגיגי מקוון
הענקת תארי מוסמך ודוקטור לפילוסופיה,
ולהכרה על פרסים למצטיינים

יום רביעי, כ' באלול תש"פ, 9 בספטמבר 2020
בשעה 18:00

לצפייה בהקרנה בשידור ישיר נא ללחוץ כאן

Greetings

H.E. President of the State of Israel, Reuven (Ruvi) Rivlin
כבוד נשיא המדינה, ראובן (רובי) ריבלין

Prof. Alon Chen
President, Weizmann Institute of Science
נשיא מכון ויצמן למדע

Prof. Gilad Perez
Dean, Feinberg Graduate School
פרופ' גלעד פרז
דיקן מדרשת פיינברג של מכון ויצמן למדע

Prof. Daniella Goldfarb
Chair, Scientific Council of the Weizmann Institute of Science
פרופ' דניאלה גולדפרב
יו"ר המועצה המדעית

Prof. Nili Cohen
President, The Israel Academy of Sciences and Humanities
2017 Israel Prize recipient in Law
פרופ' נילי כהן
נשיאת האקדמיה הלאומית הישראלית
כלת פרס ישראל לחקר המשפט לשנת תשע"ז

In the company of champions

Yael Arad
Israel's first winner of an Olympic medal
Entrepreneurship and business development expert
אחוות מצוינים
יעל ארד
הישראלית הראשונה שזכתה במדליה אולימפית
מומחית ליזמות ופיתוח עסקי

Smile for science

Lior Halfon (Kalfo), artist and entrepreneur
Creator, Director, the International Black Light Theater in Israel; the Voca People
ליאור חלפון, אמן ויוזם
יוצר ובמאי התיאטרון השחור הבין-לאומי בישראל; הווקה פיפל

On behalf of the graduates

Dr. Eman Khatib-Massalha
ד"ר אימאן חטיב-מסאלחה

Host: **Dr. Hila Korach**, journalist and TV personality
מנחה: ד"ר הילה קורח, עיתונאית ומגישת טלוויזיה

The ceremony will also be screened live on Weizmann Institute's
YouTube channel and Facebook page

הטקס יוקרן גם ביטיוב ובדף הפייסבוק של מכון ויצמן למדע

Contents

[The Weizmann Institute of Science](#)

[The Feinberg Graduate School](#)

[Prizes for outstanding PhD students](#)

[Prizes for outstanding MSc students](#)

[Competitive Fellowships](#)

[PhD Recipients](#)

[MSc Recipients](#)

[Non-thesis MSc in Science Teaching Recipients](#)

[With gratitude to the supporters of the Feinberg Graduate School at the Weizmann Institute of Science](#)

[Scholarship Awards Postdoctoral Scholarships in Perpetuity](#)

[Scholarship Awards PhD Scholarships in Perpetuity](#)

[Scholarship Awards MSc Scholarships in Perpetuity](#)

The Weizmann Institute of Science

The Weizmann Institute of Science is one of the world's leading institutions of basic scientific research in all disciplines of natural and exact sciences: mathematics and computer sciences, physics, chemistry, biochemistry and biology. Its scientists conduct studies in fields that are on the cutting edge of science and that serve to enrich human knowledge about the world around us and our role in the universe. The Institute's unique character encourages numerous multidisciplinary collaborations in all areas of research. Weizmann Institute investigations greatly further the development of new technologies and alternative sources of energy and the invention of new materials, medicines, and state-of-the-art medical treatment. Nearly 4,000 scientists, students, technicians, and administrative staff make up the Weizmann community on campus. The Institute also invests considerable efforts and resources in science education and literacy for school-age children. The budget of the Weizmann Institute is approximately one billion shekels—a quarter of which is granted by the Israeli government, with the remainder originating from grants won by the Institute's scientists as well as from donations and scholarships.



The Feinberg Graduate School

The Feinberg Graduate School is the academic arm of the Weizmann Institute of Science. It was founded in 1958 with the support of the United States government. The Graduate School is named for Abraham Feinberg LLB (USA) founder and first chair of its Board of Trustees. The main goal of the Feinberg Graduate School (FGS) is the advanced training of the next generation of creative and original researchers in the natural sciences and mathematics, who will go on to become scientific leaders.

The Graduate School offers Master of Science (MSc) and Doctor of Philosophy (PhD) programs in physics, chemistry, life sciences, mathematics and computer science, and science teaching. Interdisciplinary programs are widespread and encouraged.

Since its founding, FGS has been an accredited institution of higher learning in Israel. It later received an absolute charter granted by the Board of Regents of the State of New York. The instructors and advisors of the Graduate School are members of the scientific staff of the Weizmann Institute of Science. Currently, there are over 1,100 graduate students, with a student-teacher ratio of 4:1, enabling considerable individual attention. The official language of instruction is English, which allows foreign students to participate fully in all of the Graduate School's programs. The only criteria for acceptance to FGS are academic excellence and scientific integrity. Admission to all programs and activities is granted without regard to race, gender, sexual orientation, religion, or nationality. All students are directly involved in the research conducted at the Weizmann Institute, and receive scholarships that allow them to devote all their energies to research and study. There are no tuition fees.

The Graduate School consists of five Research Schools: the Solo Dwek and Maurizio Dwek Research School of Chemical Science, the Ekard Research School of Biological Science, the Lorry I. Lokey Research School of Biochemical Science, the Moross Research School of Mathematics and Computer Science, and the André Deloro Research School of Physical Science.

These schools provide an extra boost to the students' immersion into scientific research, supporting them in their becoming mature scientists. The Research Schools also offer students a wide range of opportunities for personal development, such as scientific travel grants to facilitate expanded contacts with the international research community, and greater exposure to world leaders in



their fields. Each Research School is headed by a Director appointed by the Dean of FGS, and each Director is assisted by a Board of Studies that coordinates all activities in the relevant discipline.

The Feinberg Graduate School is responsible for the administrative and academic aspects of postdoctoral training at the Weizmann Institute of Science. FGS also coordinates the Kupciner-Getz International Summer Science School for outstanding international undergraduate students.

The Feinberg Graduate School is headed by a Dean, assisted by the Academic Secretary of the School and by a steering committee consisting of the Directors of the Research Schools. The Graduate School Office coordinates all the general administrative operations of FGS.



Prof. Alon Chen
President, Weizmann Institute
of Science

Dear graduates, men and women, and proud family members.

How thrilling it is to speak before you at this important crossroads in your lives, a moment before you set out on new paths, a moment before takeoff. The fact that reality forces us to hold a ceremony online, and not in a large setting as we have historically done, only intensifies the excitement and the meaning of this moment in your lives and the life of the Institute.

Perhaps we should recall what brought us here, what unifies us—scientists, students, and graduates. I think that if we look into the depths of our consciousness, we'll see that we're all curious and we're all optimists. Curiosity makes us try to understand the world. Optimism makes us believe that we can, if we only try hard enough, to attain that goal. Two factors help us navigate between the vectors of curiosity and optimism. The first one is the research methods you've acquired in recent years. The second factor is values of integrity and the uncompromising quest for truth. These are the values you acquired from home, that you were raised on by your parents, who are watching you and are proud of your achievements.

The journey you're embarking on now, everyone's journey, will be marked by ups and downs, with unexpected twists and turns, and failures alongside successes. Sometimes it seems that we are diverging from our path. Don't despair. Don't give up. Continue on your path and always remember the goal we set before us. We want to understand the world, but on our way, we strive to work for the benefit of humankind.

The challenges that await you are quite different than those that awaited our graduates in previous years. The coronavirus pandemic is reshaping our world, and we must all learn the new rules on the go. The good news is that you're embarking on this complicated reality equipped with professional tools from the forefront of human knowledge that will enable you to take action and contribute to improving the status quo, and this is where the optimism instilled in us of all comes into effect. We are proud of you and hope that the twists and turns and the ups and downs on your way will offer moments of discovery, wonderment, and fulfillment of dreams. You are our ambassadors to the future, and we're sure that thanks to you, our world will be a better place.

A handwritten signature in black ink, appearing to read 'Alon Chen'.

Prof. Alon Chen





Prof. Gilad Perez
Dean,
Feinberg Graduate School

After spending days and nights with us, in our libraries, classes and labs, you know that researchers adopt critical ways of thinking and are able to constantly change their point of view, continuously adapting to the unexpected path of the scientific practice. At this time, while coping with the global pandemic, we realize that in addition to our training to become leading researchers, we have actually prepared ourselves to successfully adapt to our new reality.

We are excited that your graduation day has arrived, despite our inability to share an actual stage with you.

The new reality had us all facing the unexpected, a new situation for researchers, who cope with the unknown on a daily basis. But rarely does the research process lead to exciting discoveries. I still remember the sense of joy I had and shared with my supervisor as a student, the moment we attained a new result, not a very significant one, but one that was only known to us. We're thrilled to gather here to celebrate the road you have taken as young scientists who have coped successfully with the uncertainty and contributed to the expansion of the human knowledge. We hope that in the future, you'll also experience many gratifying moments of discovery and renewal.

From here, you'll take a different path. A challenging world awaits you. In today's reality, where we're engulfed with disinformation, accessible to all through pop culture, and fed by the media and social networks. Reliable information has become a coveted commodity, but one that is difficult to attain. During your studies at the Institute, you received tools and training to distinguish between facts and distortions and to generate genuine knowledge. We're all celebrating the degrees you're receiving and proudly stipulate that this makes you today ambassadors of human knowledge. With great honor comes great responsibility. We hope to see you leading our society in your next steps in life.

Congratulations!

A handwritten signature in black ink, appearing to read 'Gilad Perez'.

Prof. Gilad Perez



Prof. Daniella Goldfarb
Chair,
Scientific Council

Dear graduates,

We're in the midst of an extraordinary worldwide crisis, and there is much uncertainty. How long will it last, and what will its health, economic, and social consequences be?

In light of this crisis, the ceremony for the conferment of degrees, the most thrilling annual ceremony at Weizmann Institute, is held in a manner that was previously inconceivable for us. Yet the online format doesn't diminish its importance and strength. For all of us, it's a once-in-a-lifetime event, and I'm happy to be with you despite being physically distant.

The coronavirus crisis intensified and emphasized the importance of science and those engaged in it. You are young researchers who join the scientific endeavor this year as independent researchers, in all its facets and forms.

Upon graduation, you've become experts, each in their own field, and the fields are very disparate. But there are several common, unifying characteristics which you all acquired here at the Weizmann Institute: the ability to research the unknown fearlessly; the ability to tackle unsolved problems which you are the first to solve; the ability to face failures and unpredictable changes; and to transform them into discoveries. That's the uniqueness and importance of a PhD degree.

These capabilities are extremely important, not only in research, but in all fields that require breakthroughs, in industry and in education as well. You depart with a tremendous asset, and I'm sure you'll only put it to good use. Well done, and I wish you all the success. I know that a significant percentage of PhD recipients are women. You are a minority in many fields, especially in leadership roles, and I hope you will continue to break glass ceilings – you can.

Best wishes also to MSc graduates who still have a stretch of work and learning ahead of them.

Finally, many thanks and best wishes to your families, parents, partners, and children, who supported you along the way, during the ups and downs, and today they are glowing with pride.

Well done and good luck to you all.

A handwritten signature in black ink, appearing to read 'D. Goldfarb'.

Prof. Daniella Goldfarb



Yael Goren-Wegman
Executive Director
Israeli Friends Association
& Alumni Organization
Weizmann Institute of Science

Dear Graduates,

The coronavirus pandemic is affecting the professional and personal lives of everyone around the globe. You have done something extra-ordinary by finishing your graduate studies amidst these challenging times. To that end, I would like to congratulate you on behalf of the Weizmann Institute Alumni Organization and welcome you the worldwide community of Weizmann alumni.

As much as we all wanted to be on campus together and to bid you farewell and good luck in person, unfortunately this year we weren't able to come together for the traditional ceremony. Yet COVID-19 has also caused us to gain some new, positive insights and has emphasized the critical importance of scientific research for the benefit of humanity—and the value of a collective effort that involves putting aside intellectual property and financial considerations to enable the best minds to come together to help solve this historic challenge.

In becoming alumni, you become members of a special group of individuals.

Many Weizmann Institute alumni hold senior posts and influential positions in Israel and abroad—a true source of pride for the Institute. A quarter of Phd graduates in the sciences in Israel are Weizmann alumni, who greatly contribute to the country's economic, scientific, and technological development.

The Weizmann Alumni Organization offers a mutually beneficial relationship between the Institute and its graduates, through its social and professional alumni network, and strengthens the Institute's ties with Israel's commercial and financial sectors.

I would like to take this opportunity to invite you to register for the Alumni Organization via our website. Once you register and update your contact details regularly, we will be able to keep in touch with you and send you Weizmann Institute updates and news.

The Weizmann Alumni Organization can also be found on LinkedIn Facebook and Instagram.

I welcome your ideas and initiatives for continuing to grow the Alumni Organization as a meaningful and influential entity, and wish you all the best in your future endeavors.

Yael Goren-Wegman



Alumni Organization

The Weizmann Institute of Science Alumni Organization is your connection to more than 7,000 alumni, holding key positions and leading roles in industry and academia in Israel and worldwide. The Alumni Organization is committed to establish a mutually beneficial relationship between the Institute and its alumni, through joint activities, events and networking opportunities.

☎ 08-9342212

🌐 <https://www.weizmann.ac.il/alumni>

✉ alumni@weizmann.ac.il

📘 <https://www.facebook.com/weizmann.alumni/>

🌐 <https://www.linkedin.com/company/29019774/>





Prof. Nili Cohen
President,
Israel Academy of Sciences
and Humanities

Dear Graduates,

I'm glad to participate in this exciting ceremony of graduates of the Feinberg Graduate School at the Weizmann Institute of Science. My heartfelt congratulations to the MSc and PhD degree recipients. You have attained an advanced degree at one of the best scientific research institutions in the world. That is a formidable achievement. I also extend greetings to all those who helped you along the way, your families, your friends, your supervisors, and the entire Institute's staff.

I asked to review the composition of the graduating class. You will not be surprised that I was interested in the number of women, and I was glad to see that they comprised nearly half of the graduates. But the task is not yet complete. Mathematics, physics, and computer science are yearning for female researchers, and I know that the Institute has made impressive gains in these fields as well.

During the difficult coronavirus days. We are all going through a complicated and challenging experience. These days confront us with health, financial, social, and legal challenges, and first and foremost, a scientific challenge. The whole world is intently seeking solutions that will guide us as to how to manage during this crisis, as well as solutions for the future that will cure the disease and immunize us from it. The question regarding how to proceed is a political, economic, and social question, one deeply intertwined with scientific issues. Research groups all over the world are addressing this issue. We hear this or that scientific analysis, and at this point, it's hard to reach clear conclusions. And in light of the wonderment vis-a-vis the unknown, the coronavirus crisis raises questions about science and the extent to which it is trusted, and that's a short point I'd like to address here.

We expect the public and policymakers to trust science. This notion is anchored in a paradox I'll call "The paradox of trusting doubt". I'll explain briefly. Scientific knowledge relies on assumptions that require verification and on techniques or methods to confirm findings. An inseparable part of this process is the freedom to question any scientific assumption and to try and offer a counter-assumption based on new knowledge. Indeed, the history of science is full of demised assumptions that were replaced by other assumptions. As a short illustration, let's recall Newton and Einstein. And herein lies the paradox.

Scientific researchers ask the public and the authorities to trust science, but how can a method based on questioning ask those who operate outside of it to trust it? The answer lies, to a large extent, in the relationship between science and

technology. While science is always riddled with doubts, there's no question about many of its products. That is, there's no doubt about the usability of technological products of science, most of which we enjoy. All the while, basic science will keep searching, liberated from external constraints, deriving from abundant curiosity to know the world. And that freedom, or quest, will create new knowledge that will create new assumptions and probably new technologies.

I will say briefly that technologies, the fruit of science, may involve dangers, such as those emanating from destructive weapons, the Internet, certain medications, or artificial intelligence. Is science fast enough to respond to its products? On top of pure scientific knowledge, science must also be aided by other fields: humanities, social sciences, ethics, and law, and the question is whether these knowledge domains can decrease the risks and increase the trust in science.

We always talk about two cultures: humanities, and the natural and exact sciences. But in fact, in nature, there's no need to separate between the cultures, and I think that the same goes for science in general. Therefore, it seems that we must merge the cultures and begin an ethical debate in any new field of knowledge we aim to conquer. And beyond that, importantly, the State must maintain the existence of a science that is liberated from external constraints and increase its investment in it, in all fields, because without scientific research, there's no culture, no heritage, and no economic welfare.

As for the relationship between the state, science, and investment, I'd like to conclude by referring to Chaim Weizmann, as we stand in this immensely impressive hall of science named after him. Weizmann was an exemplary figure of a scientist who forcefully combined a scientific and technological vision with policymaking, Zionism, and culture, and I feel a nearly familial kinship toward him. Nearly 100 years ago, on December 5, 1923, Weizmann arrived for a visit in New York and stayed at the house of my grandfather and grandmother, Baruch and Bat Sheva Grabelsky, who were among the leaders of the Zionist community in New York. Weizmann laid out his vision before the guests, including Arthur Ruppin, Louis Lipsky, and Meyer Weisgal. After their encounter with Weizmann's convincing character, my family moved from New York to Jerusalem a few years later to fulfill the Zionist dream here.

I see in each and every one of you the manifestation of Weizmann's values, and I hope you will be able to act in the spirit of the scientific and social vision he promoted.

Finally, despite the physical distance forced upon us, I feel a great spiritual affinity to you, and I wish you and all your dear ones' success, the fulfillment of your goals, and good health.

Warm greetings to you all, and thank you very much.

Prof. Nili Cohen



Dr. Eman Khatib-Massalha
On behalf of the graduates

Honorable participants, President of the Institute, Dean of the Feinberg Graduate School, Chair of the Scientific Council, Vice Presidents, Deans, members of the academic staff, members of the administrative staff, honorable guests, dear families and my fellow graduates. I'm excited and proud to stand here today and speak on behalf of the graduates. It's a great privilege and a dream come true.

I chose to start off with a quote by Prof. Chaim Weizmann, who said, "I trust and feel sure in my heart that science will bring to this land both peace and a renewal of its youth... I speak of both science for its own sake and science as a means to an end."

Before joining Weizmann Institute, I had many fears and concerns. I was apprehensive about the high level of research, the adjustment to studies in English, being far from my family in the north, and integrating in the day-to-day life in Rehovot. After several months, my fears were proven false, and the Institute quickly became a second home to me and my family.

During our studies, we the graduates found the Weizmann Institute to be a unique institution, enabling top-notch research on a global scale based on a strong partnership between the most brilliant scientists and visionary leadership, while promoting values of equality for all. The Institute houses advanced laboratories with the newest technological equipment and a highly skilled, supportive staff enabling us to develop and expand our ability to carry out creative, curiosity-driven scientific research. Therefore, if I may, I'll describe the Weizmann Institute in one sentence: Striving for excellence isn't an exception to the rule, it is the rule itself.

My fellow graduates and I leave today with a higher academic education and a set of values and worldviews that will enable us to shape the future of this country through the realm of science. The writer George Elliot said: "It is never too late to be what you might have been," and indeed, if there's something we all received in our studies at the Institute, it's the freedom and ability to be, to be who we are, to be what we are, to reach self-fulfillment and personal empowerment.

A moment before we spread our wings, I want to thank on behalf of us all, the academic staff of the Weizmann Institute and the Feinberg Graduate School. Thank you for your total attentiveness to each question, request, or problem. We appreciate your support and advice and thank you for being and continuing to be partners in our success. Thank you to the administrative staff, the technical staff, the staff of the Feinberg Graduate School and the Student Council.

Special thanks to my supervisor Prof. Tsvee Lapidot, and Dr. Orit Kollet, whom I had the privilege of collaborating with—for their assistance, support, and love during my PhD studies. Thank you all for being my second family.

Last, but not least, thank you to our partners, to the loving, aiding, and supportive families. We don't always remember to stop and tell you how much we love you, and sometimes it seems we take your support for granted, but it's important for you to know that nothing is taken for granted. You, dear families, have a central role in our success, not lesser than ours. So, thank you from the bottom of our hearts.

On a personal note, a huge thank you to my dear husband, Dr. Hassan, and to our daughter Hiba, to my family and my husband's family. Just know that without your great support it would have been difficult for me to be here tonight.

On this honorable occasion I would like to dedicate the doctoral degree I'm receiving today to my sister Hiba, may she rest in peace, who passed away during my studies at the Institute, and played a major part in my success. If I may, for the sake of my parents, I'll do so in my mother tongue.

امتناني وكل العرفان لزوجي، لعائلتي ولعائلة زوجي . كونوا على يقين تام أنه لولا دعمكم الغامر الزاخر لما وجدتموني أقف بينكم اليوم بهذا الإنجاز ، وفي هذه المكانة . وهنا يشرفني أن أخلد ذكرى غاليته الفقيده شقيقتي هبة رحمها الله ، بإهدائها هذه المرتبة وهذا التحصيل والتي كان لها النصيب الوافر لما انا عليه اليوم من نجاح وشرف مروم

And finally, dear graduates, remember we also deserve a pat on our backs and huge congratulations for the effort, faith, and hard work, day and night; and the unquenchable desire to learn and succeed.

I wish us all success ahead in the path we wisely choose, in the spirit of Prof. Chaim Weizmann's vision to promote science, peace, and equality in this country.

Thank you.

Dr. Eman Khatib-Massalha

Prizes for outstanding PhD students

John F. Kennedy Prize

The John F. Kennedy Prize is sponsored by a fund that was established at the Institute in memory of the late United States President John F. Kennedy.

Mr. Aviram Uri

Advisor: Prof. Eli Zeldov, Department of Condensed Matter Physics

Mr. Yitzhak Norman

Advisor: Prof. Rafael Malach, Department of Neurobiology

Dr. Raviv Pryluk

Advisor: Prof. Rony Paz, Department of Neurobiology

Dr. Yair Segev

Advisor: Prof. Ed Narevicius, Department of Chemical and Biological Physics

Dr. Roei Tell

Advisor: Prof. Oded Goldreich, Department of Computer Science and Applied Mathematics

Dimitris N. Chorafas Prize

Dr. Dimitris Chorafas (1926-2014) advisor, author, thinker and philanthropist, established a foundation that awards scientific prizes for outstanding work in selected fields. Each year the foundation accepts candidates from a small number of selected prestigious universities from around the world, including the Weizmann Institute of Science.

Mr. Shachar Carmeli

Advisor: Prof. Dmitry Gourevitch, Department of Mathematics

Mr. Asaf Rozen

Advisor: Prof. Shahal Ilani, Department of Condensed Matter Physics

Prof. Israel Dostrovsky Memorial Prize

The Weizmann Institute of Science and the Israel Atomic Energy Commission jointly award an annual prize for excellence in memory of Prof. Israel Dostrovsky who served as the Director of the IARC and as the 5th President of the Weizmann Institute of Science.

Ms. Angelica Niazov-Elkan

Advisor: Prof. Boris Rybtchinski Department of Organic Chemistry

Dr. Or Katz

Advisor: Dr. Ofer Firstenberg Department of Physics of Complex Systems

Ruth and Prof. Abraham (Edek) Blaugrund Prize

After joining the Weizmann Institute in the 1950's, Prof. Abraham Blaugrund made significant contributions to the field of plasma physics. The Ruth and Prof. Abraham (Edek) Blaugrund Prize was established by the Blaugrund family, and it is awarded to outstanding PhD students in Physics.

Dr. Regev Ben-Zvi Bechler

Advisor: Prof. Ernesto Joselevich, Department of Materials and Interfaces

Dr. Elchanan E. Bondi Memorial Prize

Dr. Elchanan Bondi died in 1971. Elchanan did his doctoral thesis in the Department of Biophysics while suffering from a kidney disease.

Dr. Guy Schleyer

Advisor: Prof. Assaf Vardi, Department of Plant and Environmental Sciences

Prof. Dov Elad Memorial Prize

Prof. Dov Elad died in 1979. Dov was a professor of chemistry and chaired the Board of Studies in Chemical Sciences. He contributed significantly to the Institute and to the Graduate School.

Dr. Michael Kulbak

Advisors: Prof. Gary Hodes and
Prof. David Cahen, Department of Materials and Interfaces

Prizes for outstanding PhD students

Prof. Shimon Reich Memorial Prize

Prof. Shimon Reich died in 2010. Shimon was a professor in the Department of Materials and Interfaces, of the Faculty of Chemistry, at the Weizmann Institute of Science for forty years.

Ms. Yael Korem Kohanim

Advisor: Prof. Uri Alon, Department of Materials and Interfaces

Mr. Evgeniy Makagon

Advisor: Prof. Igor Lubomirsky, Department of Materials and Interfaces

Gad Resheff Memorial Prize

Gad Resheff was killed in 1973 during the Yom Kippur War while serving as the commander of an outpost at the Suez Canal. He was awarded the Medal of Valor posthumously. Gad was a doctoral student in the Department of Biophysics.

Mr. Dan Mikulincer

Advisor: Prof. Ronen Eldan, Department of Mathematics

Giora Yoel Yashinski Memorial Prize

Giora Yoel Yashinski was killed in action in 1971 in an air force plane that crashed on the Sinai coast. Giora completed his studies towards a Master's Degree in the Department of Chemical Physics.

Dr. Haggai Maron

Advisor: Prof. Yaron Lipman, Department of Computer Science and Applied Mathematics

Daniel Brenner Memorial Prize

Daniel Brenner was killed during the 1982 Lebanon War: Operation Peace for Galilee in the Battle of Sidon. Daniel was a doctoral student in the Department of Chemical Physics.

Mr. Ohad Trabelsi

Advisors: Prof. Robert Krauthgamer, Department of Computer Science and Applied Mathematics; and
Dr. Eden Clamtac, Ben-Gurion University of the Negev.

Lady Anne Chain Memorial Prize

Lady Anne Chain was a noted researcher and friend of the Weizmann Institute of Science for many years.

Dr. Eman Khatib-Massalha

Advisor: Prof. Tsvee Lapidot, Department of Immunology

Esther Hellinger Memorial Prize

Dr. Esther Hellinger was born in England. She joined the staff of the Daniel Sieff Research Institute upon its establishment in 1934 and worked with Dr. Chaim Weizmann.

Ms. Adi Biram

Advisor: Dr. Ziv Shulman, Department of Immunology

Haim Holtzman Memorial Prize

Haim Holtzman was killed in 1969. Haim was an air force pilot. He died while trying to land his burning plane, beyond the residential area of northern Rehovot.

Dr. Michal Eisenberg-Bord

Advisor: Prof. Maya Schuldiner, Department of Molecular Genetics

Menashe Milo Memorial Prize

Menashe Milo completed his studies in Physics as part of the academic reserves. During the Yom Kippur War, Menashe fought in the Golan Heights as a tank commander. Menashe died suddenly in 1981.

Mr. Asaf Miron

Advisors: Prof. David Mukamel and
Prof. Gregory Falkovich, Department of Physics of Complex Systems

Prizes for outstanding PhD students

Lonia and Jose Roth Memorial Prize

The prize is awarded for outstanding Ph.D. thesis research combined with excellence in writing in English. Lonia and Jose M. Roth were Holocaust survivors who admired both the natural sciences and fine writing. This Prize is in memory of their lifelong support of the Weizmann Institute and of Israel.

Dr. Gal Orenstein

Advisor: Prof. Nirit Dudovich, Department of Physics of Complex Systems

Feinberg Graduate School Dean's Prize

Dr. Hagai Edri

Advisors: Prof. Nir Davidson and Prof. Roee Ozeri, Department of Physics of Complex Systems

Prizes for outstanding MSc students

Susan Sapir Memorial Prize for MSc students

Susan Sapir worked for many years at the Weizmann Institute of Science in various positions and with great devotion. The most senior of these was the Head of the Research Grants and Projects Office.

Mr. Jonathan Bauch

Advisor: Prof. Boaz Nadler, Department of Computer Science and Applied Mathematics

Mr. Amit Bachar

Advisor: Dr. Tamir Klein, Department of Plant and Environmental Sciences

Feinberg Graduate School Dean's Prize

Mr. Ehud Aviran

Advisor: Prof. Ron Blonder, Department of Science Teaching

Ms. Tamar Jana

Advisor: Prof. Naama Barkai, Department of Molecular Genetics

Mr. Uri Zondiner

Advisor: Prof. Shahal Ilani, Department of Condensed Matter Physics

Mr. Yehonatan Hamo

Advisors: Prof. Milko Erik Van Der Boom and
Dr. Michal Lahav, Department of Organic Chemistry

Mr. Gur Arie Livni Alcasid

Advisor: Prof. Anat Yarden, Department of Science Teaching

Mr. Tzuf Lichtman

Advisors: Prof. Ady Stern and
Prof. Erez Berg, Department of Condensed Matter Physics

Mr. Raz Slutsky

Advisor: Prof. Tsachik Gelander, Department of Mathematics

Mr. Yonatan Katzenelenbogen

Advisor: Prof. Ido Amit, Department of Immunology

Ms. Leah Shavitt

Advisors: Prof. Igor Lubomirsky and
Prof. Meir Lahav, Department of Materials and Interfaces

Mr. Fadi Sheban

Advisors: Prof. Ofer Yizhar Department of Neurobiology and
Prof. Ido Amit, Department of Immunology

Competitive Fellowships

For outstanding PhD students

Clore Scholars Program

Adams Fellowships Program

Azrieli Fellows program

Ariane de Rothschild Fellowship Program for Women

Israel Ministry of Science and Technology Fellowship Program

Israel Council for Higher Education and the Planning and Budgeting Committee Fellowship programs

Competitive Fellowships

For outstanding MSc students

David Lopatie Fellows Program

Israel Council for Higher Education and the Planning and Budgeting Committee Fellowship programs

PhD Recipients

Dr. Shahar Abramovitch
 Dr. Michael Aldam
 Dr. Gideon Alon
 Dr. Daniel Aloni
 Dr. Eran Assaraf
 Dr. Omri Bar-Elli
 Dr. Noa Barak-Gavish
 Dr. Yigal Barkan
 Dr. David Bassan
 Dr. Yonit Ben David
 Dr. Regev Ben-Zvi Bechler
 Dr. Aliza Borenstein-Katz
 Dr. Elinor Breiner Goldstein
 Dr. Tomer Chen
 Dr. Ohad Cohen
 Dr. Sofia Curland
 Dr. Anat Daniel
 Dr. Natalia Davidzohn
 Dr. Neta Degani
 Dr. Ron Dekel
 Dr. Naama Pnina Dekel Bird
 Dr. Avital Dery
 Dr. Adam Doron
 Dr. Mirta Dumancic
 Dr. Marie Dunay
 Dr. Coralie Ebert
 Dr. Hagai Edri
 Dr. Haim Edri
 Dr. Yael Ehrlich
 Dr. Michal Eisenberg-Bord
 Dr. Assaf Elazar
 Dr. Nimrod Elazar
 Dr. Neta Elool Dov
 Dr. Zohar Erez
 Dr. Mikhail Evtikhiev

Dr. Andrey Feldman
 Dr. Liat Fellus Alyagor
 Dr. Karen Fridman Talmon
 Dr. Leore Geller
 Dr. Lihi Gibor
 Dr. Noa Gil
 Dr. Amir Giladi
 Dr. Itay Glazer
 Dr. Michael Gliksberg
 Dr. Adi Goldenzweig
 Dr. Gil Goldman
 Dr. Andres Goldman
 Dr. Itay Griniasty
 Dr. Shany Grossman
 Dr. Ron Hadas
 Dr. Yehuda Halfon
 Dr. Liat Hammer
 Dr. Yotam I. Hendel
 Dr. Hadas Hezroni-Bravyi
 Dr. Carmit Hillel-Karniel
 Dr. Ilan Hurwitz
 Dr. Oren Inzelberg Yifa
 Dr. Adi Jacob Berger
 Dr. Juseong Jeong
 Dr. Eilat Kahana
 Dr. Amaranta Kahn
 Dr. Shelly Kalaora
 Dr. Gal Kapach
 Dr. Rotem Karmona
 Dr. Amihai Karniel
 Dr. Ehud Dov Karpas
 Dr. Michael Karpov
 Dr. Christina Katanov
 Dr. Or Katz
 Dr. Itay Katzir

Dr. Tom Kaufman
 Dr. Ben Kayser
 Dr. Eman Khatib-Massalha
 Dr. Ilya Khivrich
 Dr. Alina Kolpakova
 Dr. Olga Kraynis
 Dr. Kristina Kucanda
 Dr. Ohr Lahad
 Dr. Shaul Lerner
 Dr. Izhak Michael Levi
 Dr. Naama Levi Feldman
 Dr. Maxim Levin
 Dr. Tal Levinson
 Dr. Haggai Maron
 Dr. Oded Mayseless
 Dr. Hisham Mazal
 Dr. Hagar Meltzer
 Dr. Vishnu Mohan
 Dr. Nofar Mor
 Dr. Noam Morali
 Dr. Vladimir Narovlansky
 Dr. Ravit Netzer
 Dr. Guy Nir
 Dr. Dror Oren
 Dr. Gal Orenstein
 Dr. Lior Pinkus
 Dr. Michal Pnueli
 Dr. Yoav Printz
 Dr. Raviv Pryluk
 Dr. Rafat Qubaja
 Dr. Lihi Radomir
 Dr. Akiva Rappaport
 Dr. Daria Riabov Bassat
 Dr. Havana Rika
 Dr. Aviv Rom

Dr. Amir Rosenblatt
 Dr. Etai Rotem
 Dr. Daphna Rothschild Bup
 Dr. Mica Rubinson
 Dr. Ziv Sade
 Dr. Itay Safran
 Dr. Guy Schleyer
 Dr. Yair Segev
 Dr. Ravid Shaniv
 Dr. Ofir Shein-Lumbroso
 Dr. Anat Shemer
 Dr. Maya Shemesh
 Dr. Danielle Sheves
 Dr. Amir Shimon
 Dr. Elee Shimshoni
 Dr. Namrata Shinde
 Dr. Michal Shreberk-Shaked
 Dr. Ofer Shwartz
 Dr. Eilam Zigi Ben Smolinsky
 Dr. Adam Solomon
 Dr. Miriam Somekh
 Dr. Karthik Srikanta
 Dr. Yan Stein
 Dr. Christine Stollberg
 Dr. Natalya Sukhanov
 Dr. Roei (Roy) Tell
 Dr. Hanoch Tempelhof
 Dr. Avichai Tandler
 Dr. Yael Tsarfati
 Dr. Timur Tuganbaev
 Dr. Daniel Turgeman
 Dr. Valeria Ulisse
 Dr. Thorsten Unterste-Bahrenberg
 Dr. Ayelet Julie Uzan
 Dr. Ilya Vainberg Slutskin

Dr. Ayelet Vardi
 Dr. Ben Zion Vatashsky
 Dr. Maya Voichek (Shamir)
 Dr. Ehud Wainstein
 Dr. Ruth Waldman
 Dr. Eyal Weinreb
 Dr. Roni Winkler
 Dr. Eliane Hadas Yardeni
 Dr. Arava Zohar



ד"ר שחר אברמוביץ'
Dr. Shahar Abramovitch

המחלקה להוראת המדעים
בהדרכת פרופ' דוד פורטס

Department of Science Teaching
Advisor: Prof. David Fortus

Thesis:

Conceptualizing energy by practicing scientists in the online media and by junior high school students



ד"ר מייקל אלדמ
Dr. Michael Aldam

המחלקה לפיסיקה כימית וביולוגית
בהדרכת פרופ' ערן בוכבינדר

Department of Chemical and Biological
Physics
Advisor: Prof. Eran Bouchbinder

Thesis:

The stability of frictional interfaces



ד"ר גדעון אלון
Dr. Gideon Alon

המחלקה לפיסיקה של מערכות מורכבות
בהדרכת פרופ' נירית דודוביץ

Department of Physics of Complex
Systems
Advisor: Prof. Nirit Dudovich

Thesis:

Attosecond time-resolved photoelectron holography



ד"ר נעה ברק-גביש
Dr. Noa Barak-Gavish

המחלקה למדעי הצמח והסביבה
בהדרכת פרופ' אסף ורדי

Department of Plant and Environmental
Sciences
Advisor: Prof. Assaf Vardi

Thesis:

From cellular processes to ecological impact \square investigating bacterial interactions with the bloom-forming marine phytoplankter *Emiliana huxleyi*



ד"ר יגאל ברקן
Dr. Yigal Barkan

המחלקה למדעי כדור הארץ וכוכבי הלכת
בהדרכת פרופ' איתי הלוי

Department of Earth and Planetary
Sciences
Advisor: Prof. Itay Halevy

Thesis:

Isotopic and structural effects of carbonate-associated sulfate in calcite and aragonite



ד"ר דוד בסן
Dr. David Bassan

המחלקה לאימונולוגיה
בהדרכת פרופ' לאה אייזנברג
פרופ' גדעון שרייבר

Department of Immunology
Advisors: Prof. Lea Eisenbach
Prof. Gideon Schreiber

Thesis:

Optimizing T cell receptor avidity using somatic hypermutation



ד"ר דניאל אלוני
Dr. Daniel Aloni

המחלקה לפיסיקה של חלקיקים
ואסטרופיסיקה
בהדרכת פרופ' יוסף ניר

Department of Particle Physics and
Astrophysics
Advisor: Prof. Yosef Nir

Thesis:

Particle phenomenology in the era of 13 TeV LHC



ד"ר ערן אשרף
Dr. Eran Assaraf

המחלקה לגנטיקה מולקולרית
בהדרכת פרופ' אלעזר זלצר

Department of Molecular Genetics
Advisor: Prof. Elazar Zelzer

Thesis:

Piezo2 expressed in proprioceptive neurons is essential for skeletal integrity



ד"ר עמרי בר-אלי
Dr. Omri Bar-Elli

המחלקה לפיסיקה של מערכות מורכבות
בהדרכת פרופ' דן אורון

Department of Physics of Complex
Systems
Advisor: Prof. Dan Oron

Thesis:

Electric field effects on linear and non-linear optical properties of nano-structures



ד"ר יונית בן דוד
Dr. Yonit Ben David

המחלקה למדעים ביומולקולריים
בהדרכת פרופ' אדי בר

Department of Biomolecular Sciences
Advisor: Prof. Edward Bayer

Thesis:

Characterization and application of cell surface designer cellulosomes in the bacterium *Lactobacillus plantarum*



ד"ר רגב בן-צבי בכר
Dr. Regev Ben-Zvi Bechler

המחלקה לחומרים ופני שטח
בהדרכת פרופ' ארנסטו יוסלביץ'

Department of Materials and Interfaces
Advisor: Prof. Ernesto Joselevich

Thesis:

Optoelectronic properties of surface-guided nanowires with controlled crystal structures and orientations



ד"ר עליזה בורנשטיין-כץ
Dr. Aliza Borenstein-Katz

המחלקה לביוולוגיה מבנית
בהדרכת ד"ר רון דיסקין

Department of Structural Biology
Advisor: Dr. Ron Diskin

Thesis:

Differential antibody immune response against GP1 of Junin and Lassa viruses & structural studies of antibodies targeting a pancreatic cancer marker



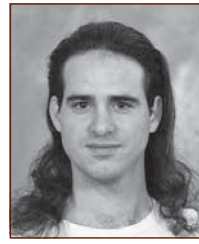
ד"ר אלינור בריינר גולדשטיין
Dr. Elinor Breiner Goldstein

המחלקה לביולוגיה מבנית
בהדרכת פרופ' עדה יונת

Department of Structural Biology
Advisor: Prof. Ada Yonath

Thesis:

Structural studies on ribosome-biosynthetic macrolides complexes



ד"ר תומר חן
Dr. Tomer Chen

המחלקה למדעי הצמח והסביבה
בהדרכת פרופ' רוברט פלור

Department of Plant and Environmental
Sciences
Advisor: Prof. Robert Fluhr

Thesis:

Singlet oxygen synthesis under osmotic shock conditions



ד"ר אוהד כהן
Dr. Ohad Cohen

המחלקה לפיסיקה כימית וביולוגית
בהדרכת פרופ' שמואל שפרן

Department of Chemical and Biological
Physics
Advisor: Prof. Sam Safran

Thesis:

Physics of beating cardiomyocyte:
Spontaneous oscillations and their
entrainment



ד"ר נטע דגני
Dr. Neta Degani

המחלקה לבקרה ביולוגית
בהדרכת ד"ר איגור אוליצקי

Department of Biological Regulation
Advisor: Dr. Igor Ulitsky

Thesis:

The role of HOXA-AS3 and HOXB-AS3 in endodermal development and differentiation



ד"ר רון דקל
Dr. Ron Dekel

המחלקה לנירוביולוגיה
בהדרכת פרופ' דב שניא

Department of Neurobiology
Advisor: Prof. Dov Sagi

Thesis:

Spatial and temporal integration in perceptual calibration



ד"ר נעמה פנינה דקל בירד
Dr. Naama Pnina Dekel Bird

המחלקה לננטיקה מולקולרית
בהדרכת פרופ' עדי קמחי

Department of Molecular Genetics
Advisor: Prof. Adi Kimchi

Thesis:

System level study of the cell death functional signature in metastatic melanoma cell lines



ד"ר סופיה קורלנד
Dr. Sofia Curland

המחלקה לחומרים ופני שטח
בהדרכת פרופ' איגור לובומירסקי
פרופ' מאיר להב

Department of Materials and Interfaces
Advisors: Prof. Igor Lubomirsky
Prof. Meir Lahav

Thesis:

Understanding electrofreezing of super-cooled water on surfaces of polar crystals at the molecular level



ד"ר ענת דניאל
Dr. Anat Daniel

המחלקה לפיסיקה של מערכות מורכבות
בהדרכת פרופ' ירון זילברברג
פרופ' דן אורון

Department of Physics of Complex
Systems
Advisors: Prof. Yaron Silberberg
Prof. Dan Oron

Thesis:

Controlling coherent light by Wavefront shaping



ד"ר נטליה דוידזון
Dr. Natalia Davidzohn

המחלקה לאימונולוגיה
בהדרכת ד"ר זיו שולמן

Department of Immunology
Advisor: Dr. Ziv Shulman

Thesis:

The role of Syk degradation in antibody mediated immune responses



ד"ר אביטל דרי
Dr. Avital Dery

המחלקה לפיסיקה של חלקיקים
ואסטרופיסיקה
בהדרכת פרופ' יוסף ניר

Department of Particle Physics and
Astrophysics
Advisor: Prof. Yosef Nir

Thesis:

Higgs physics flavor physics and their interplay



ד"ר אדם דורון
Dr. Adam Doron

המחלקה לפיסיקה של חומר מעובה
בהדרכת פרופ' דן שחר

Department of Condensed Matter
Physics
Advisor: Prof. Dan Shahar

Thesis:

Nonequilibrium transport in superconductors insulators and near quantum phase transitions



ד"ר מירטה דומנצ'יץ'
Dr. Mirta Dumancic

המחלקה לפיסיקה של חלקיקים
ואסטרופיסיקה
בהדרכת פרופ' אלכסנדר מילוב

Department of Particle Physics and
Astrophysics
Advisor: Prof. Alexander Milov

Thesis:

Z boson production in 5.02 TeV proton-proton and lead-lead data measured by the ATLAS experiment at the LHC



ד"ר מארי דונאי
Dr. Marie Dunay

המחלקה לפיסיקה כימית וביולוגית
בהדרכת פרופ' דניאלה גולדפרב

Department of Chemical and Biological
Physics
Advisor: Prof. Daniella Goldfarb

Thesis:
Instrumental and methodology
development in pulse EPR and DNP



ד"ר קורלי אברט
Dr. Coralie Ebert

המחלקה לניוירוביולוגיה
בהדרכת פרופ' אהוד אחישר

Department of Neurobiology
Advisor: Prof. Ehud Ahissar

Thesis:
Brainstem encoding of active sensing in
the vibrissal system

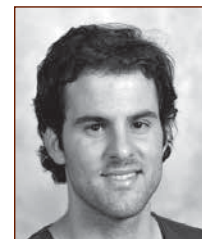


ד"ר חגי אדרי
Dr. Hagai Edri

המחלקה לפיסיקה של מערכות מורכבות
בהדרכת פרופ' ניר דודזון
פרופ' רועי עוזרי

Department of Physics of Complex
Systems
Advisor: Prof. Nir Davidson
Prof. Roei Ozeri

Thesis:
Spectroscopic measurements of
interactions in quantum degenerate
bose and fermi gasses



ד"ר אסף אלעזר
Dr. Assaf Elazar

המחלקה למדעים בימולקולריים
בהדרכת פרופ' שראל פליישמן

Department of Biomolecular Sciences
Advisor: Prof. Sarel Fleishman

Thesis:
Deciphering membrane protein
energetics using deep sequencing
Towards robust design and structure
prediction of membrane proteins



ד"ר נמרוד אלעזר
Dr. Nimrod Elazar

המחלקה לביולוגיה מולקולרית של התא
בהדרכת פרופ' אליאור (אורי) פלס

Department of Molecular Cell Biology
Advisor: Prof. Elior (Ori) Peles

Thesis:
The role of cell adhesion molecules in
myelination



ד"ר נטע אלול דב
Dr. Neta Elool Dov

המחלקה לכימיה אורגנית
בהדרכת פרופ' מילקו אריק ואן דר בום

Department of Organic Chemistry
Advisor: Prof. Milko Erik Van Der Boom

Thesis:
Electrically driven metallo-organic
assemblies: Electrochromism and
chiroptical properties



ד"ר חיים אדרי
Dr. Haim Edri

המחלקה להוראת המדעים
בהדרכת פרופ' עידית ירושלמי
פרופ' בת-שבע אלון

Department of Science Teaching
Advisors: Prof. Edit Yerushalmi
Prof. Bat-Sheva Eylon

Thesis:
Bringing simplification assumptions to
the forefront in chemical and biological
physics: Research-based development of
an introductory computational science
curriculum



ד"ר יעל ארליך
Dr. Yael Ehrlich

היחידה לארכיאולוגיה מדעית
בהדרכת פרופ' סטפן ויינר
פרופ' אליזבטה בוארטו

Scientific Archeology Unit
Advisors: Prof. Steve Weiner
Prof. Elisabetta Boaretto

Thesis:
The use of olive wood and olive pits in
dendrochronology paleoclimate and
archaeology



ד"ר מיכל אייזנברג-בורד
Dr. Michal Eisenberg-Bord

המחלקה לגנטיקה מולקולרית
בהדרכת פרופ' מאיה שולדינר

Department of Molecular Genetics
Advisor: Prof. Maya Schuldiner

Thesis:
Uncovering new determinants of
organelle communication through
contact sites

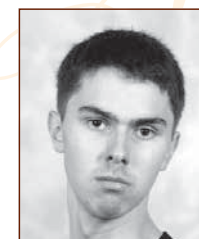


ד"ר זוהר ארז
Dr. Zohar Erez

המחלקה לגנטיקה מולקולרית
בהדרכת פרופ' רותם שורק

Department of Molecular Genetics
Advisor: Prof. Rotem Sorek

Thesis:
Characterization of a novel molecular
phage communication system



ד"ר מיכאיל יבטיחייב
Dr. Mikhail Evtikhiev

המחלקה לפיסיקה של חלקיקים
ואסטרופיסיקה
בהדרכת פרופ' עופר אהרוני
פרופ' זוהר קומרגודסקי

Department of Particle Physics and
Astrophysics
Advisors: Prof. Ofer Aharony
Prof. Zohar Komargodski

Thesis:
On superconformal field theories and
little string theories



ד"ר אנדריי פלדמן
Dr. Andrey Feldman

המחלקה לפיסיקה של חלקיקים
ואסטרופיסיקה
בהדרכת פרופ' עופר אהרוני
פרופ' זוהר קומרגודסקי

Department of Particle Physics and
Astrophysics
Advisors: Prof. Ofer Aharony
Prof. Zohar Komargodski

Thesis:
Some topics in holographic duality



ד"ר ליאת פלוס אליגור
Dr. Liat Fellus Alyagor

המחלקה לבקרה ביולוגית
בהדרכת פרופ' מיכל נאמן
פרופ' נאוה דקל

Department of Biological Regulation
Advisors: Prof. Michal Neeman
Prof. Nava Dekel

Thesis:
Angiogenesis in the selection of
dominant follicles



ד"ר קארן פרידמן טלמון
Dr. Karen Fridman Talmon

המחלקה לגנטיקה מולקולרית
בהדרכת פרופ' טלילה וולק

Department of Molecular Genetics
Advisor: Prof. Talila Volk

Thesis:
Functional analysis of RPTPs Lar and
PTP69D and their contribution for the
formation of postsynaptic sites at the
neuromuscular junction



ד"ר ליאור גלר
Dr. Leore Geller

המחלקה לביולוגיה מולקולרית של התא
בהדרכת ד"ר רביד שטראוסמן

Department of Molecular Cell Biology
Advisor: Dr. Ravid Straussman

Thesis:
The effect of intra-tumor bacteria on
chemoresistance and tumor immunity



ד"ר איתי גלזר
Dr. Itay Glazer

המחלקה למתמטיקה
בהדרכת פרופ' אברהם איזנבוד

Department of Mathematics
Advisor: Prof. Avraham Aizenbud

Thesis:
On singularity properties of convolutions
of algebraic morphisms and applications
to probabilistic Waring type problems



ד"ר מיכאל גליקסברג
Dr. Michael Gliksberg

המחלקה לביולוגיה מולקולרית של התא
בהדרכת פרופ' ניל לבקוביץ

Department of Molecular Cell Biology
Advisor: Prof. Gil Levkowitz

Thesis:
Role of the Oxytocinergic system in the
lifetime development of social behavior
and the underlying neuronal systems
required for its generation



ד"ר עדי גולדנצווייג
Dr. Adi Goldenzweig

המחלקה למדעים בימוקולריים
בהדרכת פרופ' ישראל פליישמן
פרופ' דן תופיק

Department of Biomolecular Sciences
Advisors: Prof. Sarel Fleishman
Prof. Dan Tawfik

Thesis:
Development and validation of an
automated and general structure-based
method for designing stable and highly
expressed proteins



ד"ר ליהי גבור
Dr. Lihi Gibor

המחלקה לניורוביולוגיה
בהדרכת פרופ' עפר יזהר

Department of Neurobiology
Advisor: Prof. Ofer Yizhar

Thesis:
Optogenetic dissection of prefrontal
circuits for cognitive control



ד"ר נועה גיל
Dr. Noa Gil

המחלקה לבקרה ביולוגית
בהדרכת ד"ר איגור אוליטקי

Department of Biological Regulation
Advisor: Dr. Igor Ulitsky

Thesis:
Long non-coding RNAs as regulators of
gene expression in cis

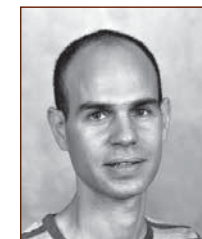


ד"ר אמיר גלעדי
Dr. Amir Giladi

המחלקה לאימונולוגיה
בהדרכת פרופ' עידו עמית

Department of Immunology
Advisor: Prof. Ido Amit

Thesis:
Reconstruction of temporally and
spatially-resolved immune complexes
and their cell-cell communication with
novel single cell technologies



ד"ר גיל גולדמן
Dr. Gil Goldman

המחלקה למתמטיקה
בהדרכת פרופ' יוסף יומדין

Department of Mathematics
Advisor: Prof. Yosef Yomdin

Thesis:
Prony systems super resolution and
partial Fourier matrices with clustered
nodes



ד"ר אנדרס גולדמן
Dr. Andres Goldman

המחלקה לבקרה ביולוגית
בהדרכת פרופ' איתן גרוס

Department of Biological Regulation
Advisor: Prof. Atan Gross

Thesis:
Mtch2 dependent modulation of
mitochondrial dynamics



ד"ר איתי גריניאסטי
Dr. Itay Griniasty

המחלקה לפיסיקה של מערכות מורכבות
בהדרכת פרופ' אולף לאונהרדט

Department of Physics of Complex
Systems
Advisor: Prof. Ulf Leonhardt

Thesis:
Effects of the quantum vacuum and the
organization of waves in space-time



ד"ר שני גרוסמן
Dr. Shany Grossman

המחלקה לניורוביולוגיה
בהדרכת פרופ' רפאל מלאך

Department of Neurobiology
Advisor: Prof. Rafael Malach

Thesis:
Neural mechanisms of human vision:
Deterministic and spontaneous aspects
of visual encoding



ד"ר רון הדס
Dr. Ron Hadas

המחלקה לבקרה ביולוגית
בהדרכת פרופ' מיכל נאמן
פרופ' נאוה דקל

Department of Biological Regulation
Advisors: Prof. Michal Neeman
Prof. Nava Dekel

Thesis:
The metabolic switch of pregnancy: A
possible role in maternal angiogenesis
and early embryogenesis



ד"ר יהודה חלפון
Dr. Yehuda Halfon

המחלקה לביולוגיה מבנית
בהדרכת פרופ' עדה יונת

Department of Structural Biology
Advisor: Prof. Ada Yonath

Thesis:
Deciphering ribosomal antibiotic
resistance mechanisms of pathogenic
bacteria at high-resolution



ד"ר כרמית הלל-קרניאל
Dr. Carmit Hillel-Karniel

המחלקה לאימונולוגיה
בהדרכת פרופ' יאיר רייזנר
פרופ' עידית שחר

Department of Immunology
Advisors: Prof. Yair Reisner
Prof. Idit Shachar

Thesis:
Lung repair by fetal and adult lung cells
across major genetic barriers



ד"ר אילן הורביץ
Dr. Ilan Hurwitz

המחלקה לפיסיקה של מערכות מורכבות
בהדרכת פרופ' ירון זילברברג
פרופ' נירית דודוביץ

Department of Physics of Complex
Systems
Advisors: Prof. Yaron Silberberg
Prof. Nirit Dudovich

Thesis:
Low frequency two dimensional Raman
spectroscopy



ד"ר אורן אינזלברג יפעה
Dr. Oren Inzelberg Yifa

המחלקה לביולוגיה מולקולרית של התא
בהדרכת פרופ' אלדד צחור

Department of Molecular Cell Biology
Advisor: Prof. Eldad Tzahor

Thesis:
The small molecule Chicago Sky Blue
promotes heart repair following
myocardial infarction in mice from high
throughput screening to molecular
mechanisms



ד"ר ליאת המר
Dr. Liat Hammer

המחלקה לגנטיקה מולקולרית
בהדרכת פרופ' עדי קמחי

Department of Molecular Genetics
Advisor: Prof. Adi Kimchi

Thesis:
Htra2/Omi a novel mediator of Therapy-
induced senescence controlling
cytoskeletal organization



ד"ר יותם י. הנדל
Dr. Yotam I. Hendel

המחלקה למתמטיקה
בהדרכת פרופ' אברהם איזנבוד
פרופ' יוסף ברנשטיין

Department of Mathematics
Advisors: Prof. Avraham Aizenbud
Prof. Joseph Bernstein

Thesis:
On singularity properties of convolutions
of algebraic morphisms and on twisted
Gelfand pairs through commutativity of a
Hecke algebra



ד"ר הדס חצרוני-בראבי
Dr. Hadas Hezroni-Bravyi

המחלקה לבקרה ביולוגית
בהדרכת ד"ר איגור אוליצקי

Department of Biological Regulation
Advisor: Dr. Igor Ulitsky

Thesis:
The roles of long noncoding RNAs during
neuronal development



ד"ר עדי יעקב ברגר
Dr. Adi Jacob Berger

המחלקה לביולוגיה מולקולרית של התא
בהדרכת ד"ר רביד שטראוסמן

Department of Molecular Cell Biology
Advisor: Dr. Ravid Straussman

Thesis:
Phenotypic and mechanistic
characterization of cancer persisters



ד"ר ג'וסונג ג'אונג
Dr. Juseong Jeong

המחלקה למדעים ביומולקולריים
בהדרכת פרופ' דוד ולך

Department of Biomolecular Sciences
Advisor: Prof. David Wallach

Thesis:
The nature and modes of regulation of
non-apoptotic functions of Caspase-8



ד"ר אילת כהנא
Dr. Eilat Kahana

המחלקה לניורוביולוגיה
בהדרכת פרופ' רוני פז

Department of Neurobiology
Advisor: Prof. Rony Paz

Thesis:
Changes in electrophysiological activity
in the amygdala - dACC circuit under the
effects of different anesthetic drugs at
different doses



ד"ר אמרנטה קהאן
Dr. Amaranta Kahn

המחלקה למדעים ביומולקולריים
בהדרכת פרופ' אדי בר
פרופ' זיו רייך

Department of Biomolecular Sciences
Advisors: Prof. Edward Bayer
Prof. Ziv Reich

Thesis:
Research and development of
hyperthermophilic cellulosomal systems



ד"ר שלי קלאורה
Dr. Shelly Kalaora

המחלקה לביולוגיה מולקולרית של התא
בהדרכת פרופ' ירדנה סמואלס

Department of Molecular Cell Biology
Advisor: Prof. Yarden Samuels

Thesis:
Characterization of immunotherapy
targets in melanoma



ד"ר גל קאפח
Dr. Gal Kapach

המחלקה למדעים ביומולקולריים
בהדרכת פרופ' יחיאל שי

Department of Biomolecular Sciences
Advisor: Prof. Yechiel Shai

Thesis:
Resistance mechanisms of Salmonella
enterica serovar Typhimurium to
antimicrobial peptides



ד"ר מיכאל קרפוב
Dr. Michael Karpov

המחלקה לפיסיקה כימית וביולוגית
בהדרכת פרופ' אדוארדס נרייביצ'יוס

Department of Chemical and Biological
Physics
Advisor: Prof. Ed Narevicius

Thesis:
Cold atomic and molecular collisions in a
magnetic trap



ד"ר קריסטינה קטנוב
Dr. Christina Katanov

המחלקה לביולוגיה מולקולרית של התא
בהדרכת פרופ' אליאור (אורי) פלס

Department of Molecular Cell Biology
Advisor: Prof. Elior (Ori) Peles

Thesis:
Molecular mechanisms of cytoskeleton-
regulating proteins in myelination



ד"ר אור כץ
Dr. Or Katz

המחלקה לפיסיקה של מערכות מורכבות
בהדרכת ד"ר עופר פירסטנברג

Department of Physics of Complex
Systems
Advisor: Dr. Ofer Firstenberg

Thesis:
Coherent and collective phenomena in
dense spin gases



ד"ר רותם קרמונה
Dr. Rotem Karmona

המחלקה לבקרה ביולוגית
בהדרכת פרופ' עמי נבון

Department of Biological Regulation
Advisor: Prof. Ami Navon

Thesis:
Regulatory loops within the proteasome



ד"ר עמיחי קרניאל
Dr. Amihai Karniel

המחלקה למדעים ביומולקולריים
בהדרכת פרופ' איתן ביבי

Department of Biomolecular Sciences
Advisor: Prof. Eitan Bibi

Thesis:
Co-translational folding intermediate
dictates membrane targeting of the
signal recognition particle-receptor



ד"ר אהוד דב כרפס
Dr. EHUD Dov Karpas

המחלקה לניורוביולוגיה
בהדרכת פרופ' אלעד שניידמן

Department of Neurobiology
Advisor: Prof. Elad Schneidman

Thesis:
The temporal structure of the code of
large neural populations



ד"ר איתי קציר
Dr. Itay Katzir

המחלקה לביולוגיה מולקולרית של התא
בהדרכת פרופ' אורי אלון

Department of Molecular Cell Biology
Advisor: Prof. Uri Alon

Thesis:
Mathematical modeling of systems in
human health and disease



ד"ר תום קאופמן
Dr. Tom Kaufman

המחלקה לביולוגיה מולקולרית של התא
בהדרכת פרופ' ורדה רוטר
ד"ר רביד שטראוסמן

Department of Molecular Cell Biology
Advisors: Prof. Varda Rotter
Dr. Ravid Straussman

Thesis:
Characterization of cellular signaling
dynamics in cancer cells using the
COLOR-Bar - Signalome system



ד"ר בן קיטר
Dr. Ben Kayser

המחלקה לחומרים ופני שטח
בהדרכת פרופ' מרדכי שבס
פרופ' דוד כאהן

Department of Materials and Interfaces
Advisors: Prof. Mordechai Sheves
Prof. David Cahen

Thesis:
Electrostatic gating of proteins in solid
state: Relating the energy landscape
of proteins to mechanisms of electron
transport



ד"ר אימאן ח'טיב-מסאלחה
Dr. Eman Khatib-Massalha

המחלקה לאימונולוגיה
בהדרכת פרופ' צבי לפידות

Department of Immunology
Advisor: Prof. Tsvee Lapidot

Thesis:

Lactate released by inflammatory bone marrow neutrophils induces their mobilization via endothelial GPR81 signaling



ד"ר איליה חיבריץ'
Dr. Ilya Khivrich

המחלקה לפיסיקה של חומר מעובה
בהדרכת פרופ' שחל אילני

Department of Condensed Matter
Physics
Advisor: Prof. Shahal Ilani

Thesis:

Measuring isolated electronic states in a carbon nanotube and their interaction with the environment



ד"ר אלינה קולפקובה
Dr. Alina Kolpakova

המחלקה לגנטיקה מולקולרית
בהדרכת פרופ' אלי ארמה

Department of Molecular Genetics
Advisor: Prof. Eli Arama

Thesis:

Formation and dynamics of the giant sperm mitochondria in Drosophila



ד"ר שאול לרנר
Dr. Shaul Lerner

המחלקה לבקרה ביולוגית
בהדרכת ד"ר איילת ארז

Department of Biological Regulation
Advisor: Dr. Ayelet Erez

Thesis:

The urea cycle enzyme ASL regulates tyrosine hydroxylase in the locus coeruleus



ד"ר יצחק מיכאל לוי
Dr. Izhak Michael Levi

המחלקה למדעי המחשב ומתמטיקה שימושית
בהדרכת פרופ' ערן סגל

Department of Computer Science and
Applied Mathematics
Advisor: Prof. Eran Segal

Thesis:

Novel computational methods for analyzing the human microbiome and its role in health and disease



ד"ר נעמה לוי פלדמן
Dr. Naama Levi Feldman

המחלקה לביולוגיה מולקולרית של התא
בהדרכת פרופ' ולרי קריונובסקי

Department of Molecular Cell Biology
Advisor: Prof. Valery Krizhanovsky

Thesis:

Senescent cells promote chronic bronchitis



ד"ר אולגה קריניס
Dr. Olga Kraynis

המחלקה לחומרים ופני שטח
בהדרכת פרופ' איגור לובומירסקי

Department of Materials and Interfaces
Advisor: Prof. Igor Lubomirsky

Thesis:

Monitoring the local and average structures of anelastic doped ceria films



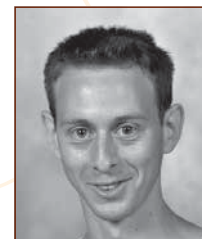
ד"ר כריסטינה קוצ'נדה
Dr. Kristina Kucanda

המחלקה לכימיה אורגנית
בהדרכת פרופ' רפאל קליין

Department of Organic Chemistry
Advisor: Prof. Rafal Klajn

Thesis:

Controlling the shape and supracrystalline order of nanoparticle assemblies



ד"ר אור להד
Dr. Ohr Lahad

המחלקה לפיסיקה של מערכות מורכבות
בהדרכת ד"ר עופר פירסטנברג

Department of Physics of Complex
Systems
Advisor: Dr. Ofer Firstenberg

Thesis:

Enhancement of atom-photon interactions for quantum nonlinear optics in atomic ensembles



ד"ר מקסים לוין
Dr. Maxim Levin

המחלקה לבקרה ביולוגית
בהדרכת פרופ' אירית שגיא

Department of Biological Regulation
Advisor: Prof. Irit Sagi

Thesis:

Engineering novel substrate-specific inhibitors targeting extracellular matrix proteases



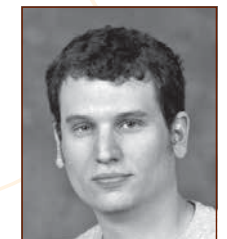
ד"ר טל לוינסון
Dr. Tal Levinson

המחלקה לפיסיקה של חומר מעובה
בהדרכת פרופ' דן שחר

Department of Condensed Matter
Physics
Advisor: Prof. Dan Shahar

Thesis:

On the relationship between electron-phonon coupling and the superconductor-insulator-transition



ד"ר חגי מרון
Dr. Haggai Maron

המחלקה למדעי המחשב ומתמטיקה שימושית
בהדרכת פרופ' ירון ליפמן

Department of Computer Science and
Applied Mathematics
Advisor: Prof. Yaron Lipman

Thesis:

Deep and convex shape analysis



ד"ר עודד מייזלס
Dr. Oded Maysel

המחלקה לביוכימיה מולקולרית של התא
בהדרכת פרופ' אורן שולדינר

Department of Molecular Cell Biology
Advisor: Prof. Oren Schuldiner

Thesis:

The role of neuronal activity and excitability in the coordinated remodeling of the 'MB circuit' in *Drosophila*



ד"ר הישאם מזל
Dr. Hisham Mazal

המחלקה לפיסיקה כימית וביוכימיה
בהדרכת פרופ' גלעד הרן

Department of Chemical and Biological Physics
Advisor: Prof. Gilad Haran

Thesis:

Single-molecule protein dynamics: From ligand binding effects on folding to function-related motions



ד"ר הגר מלצר
Dr. Hagar Meltzer

המחלקה לביוכימיה מולקולרית של התא
בהדרכת פרופ' אורן שולדינר

Department of Molecular Cell Biology
Advisor: Prof. Oren Schuldiner

Thesis:

Tissue-specific (ts)CRISPR in-vivo screen reveals novel players in neuronal remodeling



ד"ר ולדימיר נרובליאנסקי
Dr. Vladimir Narovlansky

מחלקה: פיסיקה של חלקיקים ואסטרופיסיקה
בהדרכת פרופ' עופר אהרוני
פרופ' זוהר קומרגודסקי

Department of Particle Physics and Astrophysics
Advisors: Prof. Ofer Aharony
Prof. Zohar Komargodski

Thesis:

Theories with quenched disorder



ד"ר רות נצר
Dr. Ravit Netzer

מחלקה: מדעים ביומולקולריים
בהדרכת פרופ' ישראל פליישמן

Department of Biomolecular Sciences
Advisor: Prof. Sarel Fleishman

Thesis:

Computational design of protein binders with ultrahigh-specificity and -affinity



ד"ר גיא ניר
Dr. Guy Nir

המחלקה לפיסיקה של חלקיקים
ואסטרופיסיקה
בהדרכת פרופ' ערן אופק

Department of Particle Physics and Astrophysics
Advisor: Prof. Eran Ofek

Thesis:

Fast Imaging Astronomy: Occultations speckles and streaks



ד"ר וישנו מוהן
Dr. Vishnu Mohan

המחלקה לבקרה ביולוגית
בהדרכת פרופ' אירית שגיא

Department of Biological Regulation
Advisor: Prof. Irit Sagi

Thesis:

Deciphering the role of extracellular matrix and its remodeling enzyme MMP-7 in pancreatic cancer



ד"ר נופר מור
Dr. Nofar Mor

המחלקה לגנטיקה מולקולרית
בהדרכת פרופ' יעקב חנא

Department of Molecular Genetics
Advisor: Prof. Jacob (Yaqub) Hanna

Thesis:

Deciphering Mbd3/NuRD function during early differentiation and cell reprogramming



ד"ר נועם מורלי
Dr. Noam Morali

המחלקה לפיסיקה של חומר מעובה
בהדרכת ד"ר חיים בידנקופף

Department of Condensed Matter Physics
Advisor: Dr. Haim Beidenkopf

Thesis:

Scanning tunneling spectroscopy investigation of topological weyl semimetals



ד"ר דרור אורן
Dr. Dror Oren

המחלקה לכימיה אורגנית
בהדרכת פרופ' דוד מילשטיין

Department of Organic Chemistry
Advisor: Prof. David Milstein

Thesis:

Activation of small molecules using pincer-type complexes



ד"ר גל אורנשטיין
Dr. Gal Orenstein

המחלקה לפיסיקה של מערכות מורכבות
בהדרכת פרופ' נירית דודוביץ

Department of Physics of Complex Systems
Advisor: Prof. Nirit Dudovich

Thesis:

High harmonic generation spectroscopy - from universality to singularity



ד"ר ליאור פינקוס
Dr. Lior Pinkus

המחלקה לניורוביולוגיה
בהדרכת ד"ר מיכל ריבלין

Department of Neurobiology
Advisor: Dr. Michal Rivlin

Thesis:

Effects of dopamine on response properties of distinct types of retinal ganglion cells



ד"ר מיכל פנואלי
Dr. Michal Pnueli

המחלקה למדעי המחשב ומתמטיקה שימושית
בהדרכת פרופ' ורד רוסקיידר

Department of Computer Science and Applied Mathematics
Advisor: Prof. Vered Rom-Kedar

Thesis:
Dynamics of Hamiltonian impact systems



ד"ר יואב פרינץ
Dr. Yoav Printz

המחלקה לניורוביולוגיה
בהדרכת פרופ' עפר יזהר

Department of Neurobiology
Advisor: Prof. Ofer Yizhar

Thesis:
Functional synaptic connectivity in prefrontal cortical circuits



ד"ר רביב פרילוק
Dr. Raviv Pryluk

המחלקה לניורוביולוגיה
בהדרכת פרופ' רוני פז

Department of Neurobiology
Advisor: Prof. Rony Paz

Thesis:
Neural and emotional states under social interactions



ד"ר דריה ריאבוב בשט
Dr. Daria Riabov Bassat

המחלקה לבקרה ביולוגית
בהדרכת פרופ' עמי נבון

Department of Biological Regulation
Advisor: Prof. Ami Navon

Thesis:
The mechanism of proteasomal substrate appending by the ubiquitin chain



ד"ר הוואנה ריקה
Dr. Havana Rika

המחלקה למדעי המחשב ומתמטיקה שימושית
בהדרכת פרופ' רוברט קראוטגמר

Department of Computer Science and Applied Mathematics
Advisor: Prof. Robert Krauthgamer

Thesis:
Terminal face cover in planar graphs: Sparsifiers embeddings and more



ד"ר אביב רום
Dr. Aviv Rom

המחלקה לבקרה ביולוגית
בהדרכת ד"ר איגור אוליצקי

Department of Biological Regulation
Advisor: Dr. Igor Ulitsky

Thesis:
Regulation of CHD2 expression by the Chaserr long noncoding RNA gene is essential for viability



ד"ר ראפת קבאגה
Dr. Rafat Qubaja

המחלקה למדעי כדור הארץ וכוכבי הלכת
בהדרכת פרופ' דן יקיר

Department of Earth and Planetary Sciences
Advisor: Prof. Dan Yakir

Thesis:
Fluxes of CO₂ and H₂O in a semi-arid forest ecosystem



ד"ר ליהי רדומיר
Dr. Lih Radomir

המחלקה לאימונולוגיה
בהדרכת פרופ' עידית שחר

Department of Immunology
Advisor: Prof. Idit Shachar

Thesis:
SLAM receptors roles in mediating B cells regulation in health and disease



ד"ר עקיבא רפפורט
Dr. Akiva Rappaport

המחלקה לניורוביולוגיה
בהדרכת פרופ' אילן למפל

Department of Neurobiology
Advisor: Prof. Ilan Lampl

Thesis:
Externally and internally induced arousal states modify spontaneous and evoked synaptic activities in the mouse somatosensory cortex



ד"ר אמיר רוזנבלט
Dr. Amir Rosenblatt

המחלקה לפיסיקה של חומר מעובה
בהדרכת פרופ' מוטי הייבלום

Department of Condensed Matter Physics
Advisor: Prof. Moty Heiblum

Thesis:
Thermal transport in the quantum Hall effect



ד"ר איתי רותם
Dr. Etai Rotem

המחלקה למדעים ביומולקולריים
בהדרכת פרופ' יחיאל שי

Department of Biomolecular Sciences
Advisor: Prof. Yechiel Shai

Thesis:
Suppression of T-cells by the fusion proteins of enveloped viruses and the mechanism behind it



ד"ר דפנה רוטשילד באפ
Dr. Daphna Rothschild Bup

המחלקה למדעי המחשב ומתמטיקה שימושית
בהדרכת פרופ' ערן סגל

Department of Computer Science and Applied Mathematics
Advisor: Prof. Eran Segal

Thesis:
Interactions between host and gut microbiota



ד"ר מיקה רובינסון
Dr. Mica Rubinson

המחלקה לפיסיקה של מערכות מורכבות
בהדרכת פרופ' אלישע מוזס

Department of Physics of Complex
Systems
Advisor: Prof. Elisha Moses

Thesis:
Network analysis in neuroscience:
Hierarchy and resilience of networks and
the global features of brain connectivity
in youths with attention/deficit
hyperactivity disorder



ד"ר זיו שדה
Dr. Ziv Sade

המחלקה למדעי כדור הארץ וכוכבי הלכת
בהדרכת פרופ' איתי הלוי

Department of Earth and Planetary
Sciences
Advisor: Prof. Itay Halevy

Thesis:
Kinetic isotope effects in the CO₂(g)-DIC-
CaCO₃ system



ד"ר איתי ספרן
Dr. Itay Safran

המחלקה למדעי המחשב ומתמטיקה שימושית
בהדרכת פרופ' אוהד שמיר

Department of Computer Science and
Applied Mathematics
Advisor: Prof. Ohad Shamir

Thesis:
Towards theoretical foundations for
artificial neural networks



ד"ר אופיר שיין-לומברוסו
Dr. Ofir Shein-Lumbroso

המחלקה לפיסיקה כימית וביולוגית
בהדרכת פרופ' אורן טל

Department of Chemical and Biological
Physics
Advisor: Prof. Oren Tal

Thesis:
Electronic noise in atomic and molecular
junctions: Beyond the known noise
contributions



ד"ר ענת שמר
Dr. Anat Shemer

המחלקה לאימונולוגיה
בהדרכת פרופ' סטפן יונג

Department of Immunology
Advisor: Prof. Steffen Jung

Thesis:
Studying microglia functions in
inflammatory responses in vivo



ד"ר מאיה שמש
Dr. Maya Shemesh

המחלקה למדעים ביומולקולריים
בהדרכת פרופ' נדעון שרייבר

Department of Biomolecular Sciences
Advisor: Prof. Gideon Schreiber

Thesis:
The structure and function of type I
interferon receptors cytoplasmic domain



ד"ר גיא שלייר
Dr. Guy Schleyer

המחלקה למדעי הצמח והסביבה
בהדרכת פרופ' אסף ורדי

Department of Plant and Environmental
Sciences
Advisor: Prof. Assaf Vardi

Thesis:
Deciphering the metabolic landscape
of host-virus interactions of the bloom-
forming phytoplankton *Emiliana huxleyi*



ד"ר יאיר שגב
Dr. Yair Segev

המחלקה לפיסיקה כימית וביולוגית
בהדרכת פרופ' אדוארדס נרייביצ'יוס

Department of Chemical and Biological
Physics
Advisor: Prof. Ed Narevicius

Thesis:
Collision-based cooling towards a
molecular BEC



ד"ר רביד שניו
Dr. Ravid Shaniv

המחלקה לפיסיקה של מערכות מורכבות
בהדרכת פרופ' רועי עוזרי

Department of Physics of Complex
Systems
Advisor: Prof. Roei Ozeri

Thesis:
Quantum information methods for
precision measurements with trapped
ions

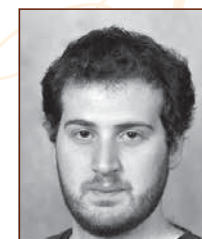


ד"ר דניאל שבס
Dr. Danielle Sheves

המחלקה למדעי הצמח והסביבה
בהדרכת פרופ' אביגדור שרץ

Department of Plant and Environmental
Sciences
Advisor: Prof. Avigdor Scherz

Thesis:
Elucidation of cell death mechanism
following PDT treatment in vitro and in
vivo



ד"ר אמיר שמעון
Dr. Amir Shimon

המחלקה לביולוגיה מבנית
בהדרכת ד"ר רון דיסקין

Department of Structural Biology
Advisor: Dr. Ron Diskin

Thesis:
Barriers for emergence and
immunogenicity of arenaviruses



ד"ר עלי שמשוני
Dr. Elee Shimshoni

המחלקה לבקרה ביולוגית
בהדרכת פרופ' אירית שגיא

Department of Biological Regulation
Advisor: Prof. Irit Sagi

Thesis:
Extracellular matrix dynamics in
inflammatory bowel diseases



ד"ר נמרטה שינדה
Dr. Namrata Shinde

המחלקה לניורוביולוגיה
בהדרכת פרופ' אהוד אחישר

Department of Neurobiology
Advisor: Prof. Ehud Ahissar

Thesis:
Development of whisker movement
patterns

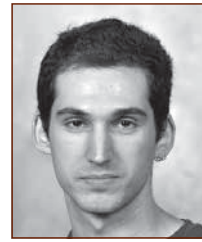


ד"ר מיכל שרברק-שקד
Dr. Michal Shreberk-Shaked

המחלקה לביולוגיה מולקולרית של התא
בהדרכת פרופ' משה אורן

Department of Molecular Cell Biology
Advisor: Prof. Moshe Oren

Thesis:
New insights on YAP and TAZ paralogs:
Their similarities differences and
regulation in cancer



ד"ר עפר שורץ
Dr. Ofer Shwartz

המחלקה למתמטיקה
בהדרכת פרופ' עומרי שריג

Department of Mathematics
Advisor: Prof. Omri Sarig

Thesis:
Thermodynamic formalism of transient
potential functions



ד"ר קארטיק שריקנטה
Dr. Karthik Srikanta

המחלקה למדעי המחשב ומתמטיקה שימושית
בהדרכת פרופ' אירית דינור

Department of Computer Science and
Applied Mathematics
Advisor: Prof. Irit Dinur

Thesis:
New arenas in hardness of
approximation



ד"ר יאן שטיין
Dr. Yan Stein

המחלקה לביולוגיה מולקולרית של התא
בהדרכת פרופ' ורדה רוטר

Department of Molecular Cell Biology
Advisor: Prof. Varda Rotter

Thesis:
The modulation of tumor-stroma
crosstalk by mutant p53



ד"ר קריסטין שטולברג
Dr. Christine Stollberg

המחלקה לפיסיקה של חלקיקים
ואסטרופיסיקה
בהדרכת פרופ' יצחק מרון
ד"ר אייל קרופ

Department of Particle Physics and
Astrophysics
Advisors: Prof. Yitzhak Maron
Dr. Eyal Kroupp

Thesis:
Investigation of a small-scale self-
compressing plasma column



ד"ר עילם זיגי בן סמולינסקי
Dr. Eilam Zigi Ben Smolinsky

המחלקה לפיסיקה כימית וביולוגית
בהדרכת פרופ' רון נעמן

Department of Chemical and Biological
Physics
Advisor: Prof. Ron Naaman

Thesis:
Applications of layered chiral molecules
in spin-OLEDs and spintronics



ד"ר אדם סולומון
Dr. Adam Solomon

המחלקה לאימונולוגיה
בהדרכת פרופ' לאה אייזנבך
פרופ' רונן אלון

Department of Immunology
Advisors: Prof. Lea Eisenbach
Prof. Ronen Alon

Thesis:
On the development of a peptide vaccine
for the prevention of Lynch syndrome



ד"ר מרים סומך
Dr. Miriam Somekh

המחלקה לכימיה אורגנית
בהדרכת פרופ' רוני נוימן

Department of Organic Chemistry
Advisor: Prof. Ronny Neumann

Thesis:
Oxidation reactions catalyzed by
polyoxometalates



ד"ר נטליה סוחנוב
Dr. Natalya Sukhanov

המחלקה לביולוגיה מולקולרית של התא
בהדרכת פרופ' אליאור (אורי) פלס

Department of Molecular Cell Biology
Advisor: Prof. Elior (Ori) Peles

Thesis:
Axon-glia interactions in peripheral
nervous system

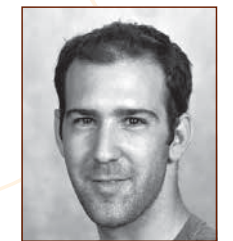


ד"ר רועי תל
Dr. Roei (Roy) Tell

המחלקה למדעי המחשב ומתמטיקה שימושית
בהדרכת פרופ' עודד גולדרייך

Department of Computer Science and
Applied Mathematics
Advisor: Prof. Oded Goldreich

Thesis:
Derandomization quantified
derandomization and their interplay
with lower bounds



ד"ר חנוך טמפלהוף
Dr. Hanoch Tempelhof

המחלקה לבקרה ביולוגית
בהדרכת פרופ' קרינה יניב

Department of Biological Regulation
Advisor: Prof. Karina Yaniv

Thesis:
Deciphering the mechanism of action of
ApoB lipoproteins on endothelial cells



ד"ר אביחי טנדלר
Dr. Avichai Tendler

המחלקה לביוכימיה מולקולרית של התא
בהדרכת פרופ' אורי אלון

Department of Molecular Cell Biology
Advisor: Prof. Uri Alon

Thesis:
Tradeoffs and optimality in biological systems



ד"ר יעל צרפתי
Dr. Yael Tsarfati

המחלקה לכימיה אורגנית
בהדרכת פרופ' בוריס ריבצינסקי

Department of Organic Chemistry
Advisor: Prof. Boris Rybtchinski

Thesis:
Crystallization mechanisms of organic molecules in aqueous media



ד"ר טימור טוגאנבאב
Dr. Timur Tuganbaev

המחלקה לאימונולוגיה
בהדרכת פרופ' ערן אלינב

Department of Immunology
Advisor: Prof. Eran Elinav

Thesis:
Dietary control of intestinal barrier function



ד"ר איילת ג'ולי אזן
Dr. Ayelet Julie Uzan

המחלקה לפיסיקה של מערכות מורכבות
בהדרכת פרופ' נירית דודוביץ

Department of Physics of Complex Systems
Advisor: Prof. Nirit Dudovich

Thesis:
From gases to solids: Resolving attosecond electron dynamics via High Harmonic Generation spectroscopy



ד"ר איליה ויינברג סלוצקין
Dr. Ilya Vainberg Slutskin

המחלקה למדעי המחשב ומתמטיקה שימושית
בהדרכת פרופ' ערן סגל

Department of Computer Science and Applied Mathematics
Advisor: Prof. Eran Segal

Thesis:
Unraveling grammatical rules of gene expression regulation by systematic sequence manipulations of 3' UTRs



ד"ר איילת ורדי
Dr. Ayelet Vardi

המחלקה למדעים ביומולקולריים
בהדרכת פרופ' טוני פוטרמן

Department of Biomolecular Sciences
Advisor: Prof. Tony Futerman

Thesis:
Neuropathology in lysosomal storage disorders



ד"ר דניאל תורגמן
Dr. Daniel Turgeman

המחלקה לפיסיקה של חלקיקים ואסטרופיסיקה
בהדרכת פרופ' אהוד דוכובני

Department of Particle Physics and Astrophysics
Advisor: Prof. Ehud Duchovni

Thesis:
Search for new physics in multijet events using the ATLAS detector



ד"ר ולריה אוליסה
Dr. Valeria Ulisse

המחלקה למדעים ביומולקולריים
בהדרכת פרופ' אברהם ירון

Department of Biomolecular Sciences
Advisor: Prof. Avraham Yaron

Thesis:
Discovering the role of the mitochondrial protein Efh1 in neuronal development



ד"ר טורסטן אונטרסטה-בהרנברג
Dr. Thorsten Unterste-Bahrenberg

המחלקה לפיסיקה כימית וביוכימיה
בהדרכת פרופ' דניאלה גולדפרב

Department of Chemical and Biological Physics
Advisor: Prof. Daniella Goldfarb

Thesis:
Resolving structural transformations in the multidrug transporter MdfA during action



ד"ר בן ציון וטאשסקי
Dr. Ben Zion Vatahsky

המחלקה למדעי המחשב ומתמטיקה שימושית
בהדרכת פרופ' שמעון אולמן

Department of Computer Science and Applied Mathematics
Advisor: Prof. Shimon Ullman

Thesis:
Answering visual questions by a composition of abstract procedures



ד"ר מאיה וויצ'ק (שמיר)
Dr. Maya Voichek (Shamir)

המחלקה לגנטיקה מולקולרית
בהדרכת פרופ' רותם שורק

Department of Molecular Genetics
Advisor: Prof. Rotem Sorek

Thesis:
Regulation of communication systems in bacteria



ד"ר אהוד וינשטיין
Dr. Ehud Wainstein

המחלקה לבקרה ביולוגית
בהדרכת פרופ' רוני זגור
פרופ' יוסף ירדן

Department of Biological Regulation
Advisors: Prof. Rony Seger
Prof. Yosef Yarden

Thesis:
Regulation of protein kinase AKT by subcellular localization and dephosphorylation



ד"ר רות ולדמן
Dr. Ruth Waldman

המחלקה להוראת המדעים
בהדרכת פרופ' רון בלונדר

Department of Science Teaching
Advisor: Prof. Ron Blonder

Thesis:
Development aspects of the professional learning community of Chemistry teachers



ד"ר איל וינרב
Dr. Eyal Weinreb

המחלקה לפיסיקה של מערכות מורכבות
בהדרכת פרופ' אלישע מוזס

Department of Physics of Complex Systems
Advisor: Prof. Elisha Moses

Thesis:
Mechanistic insights into ultrasonic neurostimulation



ד"ר רוני ווינקלר
Dr. Roni Winkler

המחלקה לנגטיקה מולקולרית
בהדרכת ד"ר נעם שטרן-גינזור

Department of Molecular Genetics
Advisor: Dr. Noam Stern-Ginossar

Thesis:
Post-transcriptional regulation mechanisms during human cytomegalovirus infection



ד"ר אליאן הדס ירדני
Dr. Eliane Hadas Yardeni

המחלקה למדעים ביומולקולריים
בהדרכת פרופ' איתן ביבי

Department of Biomolecular Sciences
Advisor: Prof. Eitan Bibi

Thesis:
Elucidating the conformational behavior of MdfA during drug binding (and transport)



ד"ר ערבה זוהר
Dr. Arava Zohar

המחלקה לחומרים ופני שטח
בהדרכת פרופ' דוד כאהן
פרופ' גרי הודס

Department of Materials and Interfaces
Advisors: Prof. David Cahen
Prof. Gary Hodes

Thesis:
What limits the performance of halide perovskite solar cells?



MSc Recipients

Ofri Abraham
Amit Abraham
Matan Alayof
Danielle Algranati
Lotem Alus
Madi Amer
Gal Arnon
Ehud Aviran
Amit Bachar
Alon Bar
Yael Bar-On
Or Barav-Boukobza
Jonathan Bauch
Ronit Beiralas
Sefi Bell-Kligler
Hila Ben Ami
Uri Ben Levy
Ilan Ben Shlush
Assaf Biran
Tom Biton
Aritra Narayan Bose
Evyatar Brayer
Benjamin Brazowski
Nadav Brukner
Yuval Bussi
Ran Calman
Omri Camus
Daniel Cohen
Asaf Cohen
Adi Cohen
Sapir Cohen
Noy Cohen Saban
Ta'el Coren
Adi Danin
Pnina Dekel

Dar Dror
Ben Efron
Ofir Eisenberg
Sagiv Eliyahu
Lora Fahdan
Menucha Farber
Noam Fein
Ben Feinstein
Dafna Friedman
Ella Fuchs
Lior Gazit
Antonios Georgiou
Hadas Gerbi
Arka Ghosh
Shachar Gold
Micah Jonathan Goldrich
Ruthie Golomb
Elad Goren
Or Gross
Ori Grossman
Amir Haluts
Yehonatan Hamo
Yotam Harnik
Daniel Hayat
Deborah Hayoun
Shahar Hegyi
Adi Herman
Dina Hochhauser
Ido Irani
Rose Margaret Irwin
Tamar Jana
Simon Jini
Tal Karady
Shiri Karagach
Michael Katz

Yonatan Katzenelenbogen
Shai Keidar
Mor Kenigsbuch
Lev Khmelnitsky
Itay Kilimnik
Tal Klein
Dor Korn
Eyal Krieger
Amir Lellouche
Omri Lesser
Tsuif Lichtman
Gur Arie Livni Alcasid
Ilay Luz
Lior Maimon
Shiran Maimon
Gili Mitki
Pavel Mostov
Shai Nahum
Zhanna Orlova
Rela Oved
Orr Paradise
Vladyslava Pechuk
Guy Peles
Tal Peretz
Renen Perlman
Gal Perlman
Gal Perlmoter
Michal Perpinial
Gur Perri
Zoe Pinkas
Gil Pinsky
Liad Pollak Zuckerman
Gal Raviv
Amir Raz
Hadar Reisin-Tzur

Betina Reyna
Michal Roitman
Deborah Rothbard
Getta Rozentsveig
Gilad Sade
Sariel Sara Salmon
Einav Sarafian-Tamam
Tamar Schechter
Nadav Scher
Noam Schiller
Noam Segev
Hadar Serviansky
Ran Shachar
Noa Shahar
Yaniv Shahar
Melina Shamshoum
Dotan Shaniv
Rotem Shaul
Leah Shavitt
Fadi Sheban
Anastasia Shenkar
Ido Shirat
Alon Shtrikman
Roi Sinoff
Raz Slutsky
Carmel Sochen
Yahel Soffer
Yakov Solomons
Vladislava Solyanikov
Shirel Steinberger
Ori Taichman
Rotem Tal
Shadi Tawil
Barr Tivon
Evyatar Tulipman

Danit Twito
Yarden Tzur
Sapir Vaknin
Itay Vaknin
Neil Vexler
Yehonatan Viernik
Ron Carmel Vinestock
Assaf Volioovich
Natalya Weber
Sarah Williamson
Lulu Winer
Elad Yehezkel
Gideon Yoffe
Mykhailo Yutushui
Roe Zamir
Inbal Zigdon
Yael Zigelman
Eran Zohar
Eyal Zoler
Uri Zondiner



עפרי אברהם
Ofri Abraham

תואר שני במדעי החיים
בהדרכת פרופ' מייק פיינזילבר

MSc in Life Sciences
Advisor: Prof. Mike Fainzilber

Thesis:
The mechanism underlying nucleolin intracellular localization



עמית אברהם
Amit Abraham

תואר שני במדעי החיים
בהדרכת פרופ' אליאור (אורי) פלס

MSc in Life Sciences
Advisor: Prof. Elior (Ori) Peles

Thesis:
Axon-glia interactions mediated by the CADM adhesion molecules at the pathogenesis of CMT neuropathies



מתן עלאיוף
Matan Alayof

תואר שני במדעי הכימיה
בהדרכת פרופ' ינון רודיך

MSc in Chemical Sciences
Advisor: Prof. Yinon Rudich

Thesis:
Measurements of airborne ice nucleating particles and the potential contribution of biological content in the ambient atmosphere using a microfluidic device



גל ארנון
Gal Arnon

תואר שני במתמטיקה ומדעי המחשב
בהדרכת פרופ' גיא רוטבלום

MSc in Mathematics and Computer Science
Advisor: Prof. Guy Rothblum

Thesis:
On prover-efficient public-coin emulation of interactive proofs



אהוד אבירן
Ehud Aviran

תואר שני בהוראת המדעים
בהדרכת פרופ' רון בלונדר

MSc in Science Teaching
Advisor: Prof. Ron Blonder

Thesis:
The implementation of a personalized online learning system in chemistry (Chem-PeTeL): The influence on teachers' attitudes, student's achievements, misconceptions, self-efficacy and attitudes towards chemistry and learning in the online environment



עמית בכר
Amit Bachar

תואר שני במדעי החיים
בהדרכת ד"ר תמיר קליין

MSc in Life Sciences
Advisor: Dr. Tamir Klein

Thesis:
A tree-ring study of tree responses to climate and human-induced disturbances in Israel and Uzbekistan



דניאל אלגרנטי
Danielle Algranati

תואר שני במדעי החיים
בהדרכת ד"ר אפרת שמע-יעקבי

MSc in Life Sciences
Advisor: Dr. Efrat Shema

Thesis:
Deciphering the combinatorial epigenome of diffuse midline glioma H3K27M-mutant



לוטם אלוס
Lotem Alus

תואר שני במדעי הכימיה
בהדרכת פרופ' ליהא אדדי
פרופ' דן אורון

MSc in Chemical Sciences
Advisors: Prof. Lia Addadi
Prof. Dan Oron

Thesis:
Guided growth of semiconductor nanowires on scratched amorphous substrates



מדי עאמר
Madi Amer

תואר שני במדעי הכימיה
בהדרכת פרופ' דן יקיר

MSc in Chemical Sciences
Advisor: Prof. Dan Yakir

Thesis:
Quantification of water and carbon usage in a mosaic of ecosystems under dry Mediterranean climate



אלון בר
Alon Bar

תואר שני במדעי החיים
בהדרכת פרופ' אורי אלון

MSc in Life Sciences
Advisor: Prof. Uri Alon

Thesis:
Design principles of human physiological circuits



יעל בר-און
Yael Bar-On

תואר שני במדעי החיים
בהדרכת ד"ר רות שרץ-שוויל
פרופ' איתן דומאני

MSc in Life Sciences
Advisors: Dr. Ruth Scherz-Shouval
Prof. Eytan Domany

Thesis:
Pathway-based analysis of the tumor microenvironment

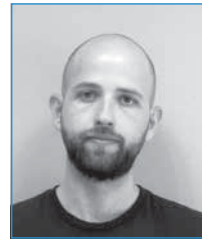


אור ברבב בוקובזה
Or Barav-Boukobza

תואר שני במדעי החיים
בהדרכת פרופ' טוני פוטרמן

MSc in Life Sciences
Advisor: Prof. Tony Futerman

Thesis:
Characterizing the pathophysiology underlying Parkinson's disease with GBA mutations



יונתן באוך
Jonathan Bauch

תואר שני במתמטיקה ומדעי המחשב
בהדרכת פרופ' בועז נדלר

MSc in Mathematics and Computer
Science
Advisor: Prof. Boaz Nadler

Thesis:
Rank 2r iterative least squares: Efficient
recovery of ill-conditioned low rank
matrices from few entries

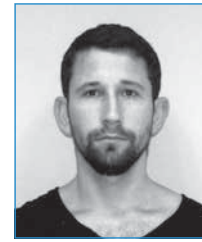


רונית רוזה ביירלס
Ronit Beiralas

תואר שני במדעי החיים
בהדרכת ד"ר עינת שנב

MSc in Life Sciences
Advisor: Dr. Einat Segev

Thesis:
Characterizing natural bacterial
communities associated with the
coccolithophore *Emiliana huxleyi*



ספי בל-קליגלר
Sefi Bell-Kligler

תואר שני במתמטיקה ומדעי המחשב
בהדרכת פרופ' מיכל אירני

MSc in Mathematics and Computer
Science
Advisor: Prof. Michal Irani

Thesis:
Blind super-resolution kernel estimation
using an internal-GAN



אסף בירן
Assaf Biran

תואר שני במדעי החיים
בהדרכת פרופ' נעמה ברקאי

MSc in Life Sciences
Advisor: Prof. Naama Barkai

Thesis:
Towards a genome-wide view at
transcriptional autoregulation



תום ביטון
Tom Biton

תואר שני במדעי החיים
בהדרכת ד"ר אורי אבינעם
פרופ' בן ציון שילה

MSc in Life Sciences
Advisors: Dr. Ori Avinoam
Prof. Benny Shilo

Thesis:
The molecular mechanism orchestrating
fusion of giant vesicles in exocytosis

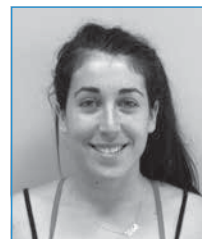


אריטה נאריאן בוסה
Aritra Narayan Bose

תואר שני במדעי הפיסיקה
בהדרכת ד"ר אורן רז

MSc in Physical Sciences
Advisor: Dr. Oren Raz

Thesis:
Periodically driven systems:
Enhancement and symmetries



הילה בן עמי
Hila Ben Ami

תואר שני במדעי החיים
בהדרכת ד"ר נטע רגב-רוצקי

MSc in Life Sciences
Advisor: Dr. Neta Regev-Rudzki

Thesis:
Malaria parasites modulate the Type-1
interferon response by inhibiting CXCL10
translation in human monocytes



אורי בן-לוי
Uri Ben Levy

תואר שני במתמטיקה ומדעי המחשב
בהדרכת ד"ר מרב ברכה פרטר

MSc in Mathematics and Computer
Science
Advisor: Dr. Merav Parter

Thesis:
New Constructions of (alpha beta) -
Spanners and Hopsets

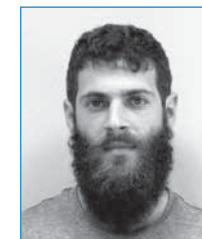


אילן בן שלוש
Ilan Ben Shlush

תואר שני במדעי החיים
בהדרכת פרופ' אברהם לוי

MSc in Life Sciences
Advisor: Prof. Avraham Levy

Thesis:
Studying the mechanism of induced
somatic targeted recombination between
homologous chromosomes in tomato
using CRISPR/Cas9 system



אביתר ברייר
Evyatar Brayer

תואר שני במדעי החיים
בהדרכת ד"ר עינת שנב

MSc in Life Sciences
Advisor: Dr. Einat Segev

Thesis:
Nitric Oxide as a signaling molecule -
from bacteria to microalgae



בנימין ברזובסקי
Benjamin Brazowski

תואר שני במדעי החיים
בהדרכת פרופ' אלעד שניידמן

MSc in Life Sciences
Advisor: Prof. Elad Schneidman

Thesis:
Learning through interactions in artificial
neural networks groups

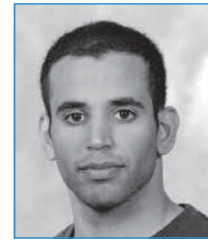


נדב ברוקנר
Nadav Brukner

תואר שני במדעי הפיסיקה
בהדרכת פרופ' מיכה ברכוז

MSc in Physical Sciences
Advisor: Prof. Micha Berkooz

Thesis:
Two point function of the N=2
supersymmetric SYK model in the double
scaled limit



יובל בוס
Yuval Bussi

תואר שני במתמטיקה ומדעי המחשב
בהדרכת פרופ' זיו רייך

MSc in Mathematics and Computer
Science
Advisor: Prof. Ziv Reich

Thesis:
Large-scale k-mer based analysis of the
informational properties of genomes
comparative genomics and taxonomy

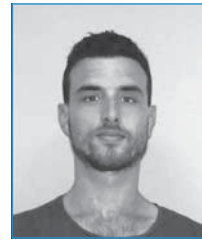


רן קלמן
Ran Calman

תואר שני במדעי הפיסיקה
בהדרכת פרופ' עופר אהרוני

MSc in Physical Sciences
Advisor: Prof. Ofer Aharony

Thesis:
On the RG flow of the symmetric-scalar
quantum field theory in 3.99 dimensions



עמרי כמוס
Omri Camus

תואר שני במדעי הפיסיקה
בהדרכת פרופ' אלעד שניידמן

MSc in Physical Sciences
Advisor: Prof. Elad Schneidman

Thesis:
Robustness and efficiency of logic gate
based random projections models of
neural population activity



ספיר כהן
Sapir Cohen

תואר שני במדעי החיים
בהדרכת פרופ' ירדנה סמואלס

MSc in Life Sciences
Advisor: Prof. Yardena Samuels

Thesis:
Identification of the mechanisms
underlying the reduced immune
rejection of melanoma tumors



נוי כהן סבן
Noy Cohen Saban

תואר שני במדעי החיים
בהדרכת ד"ר רוני דהן

MSc in Life Sciences
Advisor: Dr. Rony Dahan

Thesis:
Effect of FcgR pathways in the
therapeutic anti-tumor activity of human
anti-PD-L1 antibodies



תא-אל קורן
Ta'el Coren

תואר שני במדעי הפיסיקה
בהדרכת ד"ר שקמה ברסלר

MSc in Physical Sciences
Advisor: Dr. Shikma Bressler

Thesis:
Search for lepton flavor violating Z boson
decays

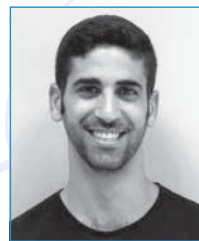


דניאל כהן
Daniel Cohen

תואר שני במדעי החיים
בהדרכת פרופ' רותם שורק

MSc in Life Sciences
Advisor: Prof. Rotem Sorek

Thesis:
Cyclic GMP-AMP signaling protects
bacteria against viral infection



אסף כהן
Asaf Cohen

תואר שני במדעי הכימיה
בהדרכת פרופ' איגור לובומירסקי

MSc in Chemical Sciences
Advisor: Prof. Igor Lubomirsky

Thesis:
The effects of elastic domains on physical
and electromechanical properties in
ceramics



עדי כהן
Adi Cohen

תואר שני במדעי הכימיה
בהדרכת ד"ר עומר יפה

MSc in Chemical Sciences
Advisor: Dr. Omer Yaffe

Thesis:
The origin of anharmonic atomic motion
in halide perovskite crystals



עדי דנין
Adi Danin

תואר שני במדעי החיים
בהדרכת ד"ר לירן שלוש

MSc in Life Sciences
Advisor: Dr. Liran Shlush

Thesis:
GTSF1 role and function in the
hematopoietic system and in acute
myeloid leukemia



פנינה דקל
Pnina Dekel

תואר שני במדעי החיים
בהדרכת פרופ' יוסף שאול

MSc in Life Sciences
Advisor: Prof. Yosef Shaul

Thesis:
The importance of the p21 RRLIF motif
to its physiological 20S proteasomal
degradation



דר דרוור
Dar Dror

תואר שני במדעי החיים
בהדרכת ד"ר תמיר קליין

MSc in Life Sciences
Advisor: Dr. Tamir Klein

Thesis:
The effect of elevated CO₂ on carbon
allocation and eco-physiology of
angiosperm and gymnosperm forest
trees



בן עפרון
Ben Efron

תואר שני במדעי החיים
בהדרכת פרופ' אילן למפל

MSc in Life Sciences
Advisor: Prof. Ilan Lampl

Thesis:
Auditory-tactile sensation in the mouse
whisker system



אופיר איזנברג
Ofir Eisenberg

תואר שני במדעי הכימיה
בהדרכת פרופ' מילקו אריק ואן דר בום
ד"ר מיכל להב

MSc in Chemical Sciences
Advisors: Prof. Milko Erik Van Der Boom
Dr. Michal Lahav

Thesis:
Hybrid molecular materials for energy
storage

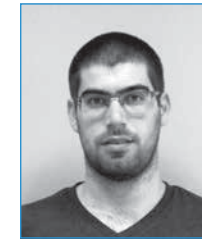


שגיב אליהו
Sagiv Eliyahu

תואר שני במתמטיקה ומדעי המחשב
בהדרכת פרופ' רונן בצרי

MSc in Mathematics and Computer
Science
Advisor: Prof. Ronen Basri

Thesis:
Coping with camera recovery and SfM
under special conditions in multi-view
settings



בן פינשטין
Ben Feinstein

תואר שני במתמטיקה ומדעי המחשב
בהדרכת פרופ' מיכל אירני

MSc in Mathematics and Computer
Science
Advisor: Prof. Michal Irani

Thesis:
From discrete to continuous convolution
layers



דפנה פרידמן
Dafna Friedman

תואר שני במדעי החיים
בהדרכת פרופ' רוני פז

MSc in Life Sciences
Advisor: Prof. Rony Paz

Thesis:
Characterization of emotional responses
and states in non-human primates using
measures of the autonomic nervous
system



אלה פוקס
Ella Fuchs

תואר שני במתמטיקה ומדעי המחשב
בהדרכת פרופ' אוריאל פיינה

MSc in Mathematics and Computer
Science
Advisor: Prof. Uriel Feige

Thesis:
On the path partition number of regular
graphs



לורה פהדאן
Lora Fahdan

תואר שני במדעי החיים
בהדרכת פרופ' מיכל נאמן

MSc in Life Sciences
Advisor: Prof. Michal Neeman

Thesis:
The role of uterine macrophages
in decidual development and tissue
remodelling during early pregnancy



מנוחה פרבר
Menucha Farber

תואר שני בהוראת המדעים
בהדרכת פרופ' בוריס קוי"צו

MSc in Science Teaching
Advisor: Prof. Boris Koichu

Thesis:
Designing teaching situations aimed at
fostering mathematical flexibility within
the collaboration of researchers and
teachers



נועם פיין
Noam Fein

תואר שני במדעי החיים
בהדרכת פרופ' עמוס תנאי

MSc in Life Sciences
Advisor: Prof. Amos Tanay

Thesis:
Cell commitment during germ
layer differentiation in response to
contradicting stimuli



ליאור גזית
Lior Gazit

תואר שני במדעי הפיסיקה
בהדרכת פרופ' רועי עוזרי

MSc in Physical Sciences
Advisor: Prof. Roei Ozeri

Thesis:
Quantum feedback on trapped ions



אנטוניוס גאורגיו
Antonios Georgiou

תואר שני במדעי החיים
בהדרכת פרופ' מיכאל צודיקס

MSc in Life Sciences
Advisor: Prof. Michail Tsodyks

Thesis:
Retroactive interference model of power-
law forgetting



הדס גרבי
Hadas Gerbi

תואר שני במדעי החיים
בהדרכת ד"ר תמיר קליין

MSc in Life Sciences
Advisor: Dr. Tamir Klein

Thesis:
Physiological drought resistance
mechanisms and expression analysis of
aquaporins in wild species vs. rootstocks
of almond and plum



ארקה גוש
Arka Ghosh

תואר שני במדעי הפיסיקה
בהדרכת ד"ר דורון קושניר

MSc in Physical Sciences
Advisor: Dr. Doron Kushnir

Thesis:

No natural suppression for low-luminosity Type Ia SNe from double detonation sub-Chandra models



שחר גולד
Shachar Gold

תואר שני במדעי הכימיה
בהדרכת פרופ' ליאור קרוניק

MSc in Chemical Sciences
Advisor: Prof. Leeor Kronik

Thesis:

Entropic stabilization of halide perovskites from first principles



מיכה יהונתן גולדרייך
Micah Jonathan Goldrich

תואר שני במדעי החיים
בהדרכת ד"ר איגור אוליצקי
ד"ר שרגא שוורץ

MSc in Life Sciences
Advisors: Dr. Igor Ulitsky
Dr. Schraga Schwartz

Thesis:

A high-throughput screen for sequences mediating sensitivity to nonsense mediated decay (NMD)



אורי גרוסמן
Ori Grossman

תואר שני במדעי הפיסיקה
בהדרכת פרופ' ארז ברנ

MSc in Physical Sciences
Advisor: Prof. Erez Berg

Thesis:

Monte Carlo studies of quantum critical metals



אמיר חלוץ
Amir Haluts

תואר שני במדעי הכימיה
בהדרכת פרופ' ניר גוב

MSc in Chemical Sciences
Advisor: Prof. Nir Gov

Thesis:

Modeling cooperation group-level decision-making and conflict resolution in animal groups: A physics-Based approach



יהונתן חמו
Yehonatan Hamo

תואר שני במדעי הכימיה
בהדרכת פרופ' מילקו אריק ואן דר בום
ד"ר מיכל להב

MSc in Chemical Sciences
Advisors: Prof. Milko Erik Van Der Boom
Dr. Michal Lahav

Thesis:

Stimuli-responsive thin films: The effect of light magnetic and electric fields on charge storage and release



רות דניאל גולומב
Ruthie Golomb

תואר שני במדעי החיים
בהדרכת פרופ' יצחק פלפל

MSc in Life Sciences
Advisor: Prof. Yitzhak Pilpel

Thesis:

Studying evolutionary game dynamics through public good protein production



אלעד גורן
Elad Goren

תואר שני במדעי הכימיה
בהדרכת ד"ר אמנון בר שיר

MSc in Chemical Sciences
Advisor: Dr. Amnon Bar Shir

Thesis:

Paramagnetic cyclodextrins for 19F-Guest exchange saturation transfer (19F-GEST): Studying fast kinetics and related applications



אור גרוס
Or Gross

תואר שני במדעי החיים
בהדרכת פרופ' אברהם לוי

MSc in Life Sciences
Advisor: Prof. Avraham Levy

Thesis:

Visual tracking of somatic DNA crossover in tomato



יותם הרניק
Yotam Harnik

תואר שני במדעי החיים
בהדרכת פרופ' שלו איצקוביץ

MSc in Life Sciences
Advisor: Prof. Shalev Itzkovitz

Thesis:

Spatial sorting enables exploring the zoned proteome in the small intestine epithelium



דניאל חייט
Daniel Hayat

תואר שני במדעי החיים
בהדרכת פרופ' רבקה דיקשטיין

MSc in Life Sciences
Advisor: Prof. Rivka Dikstein

Thesis:

Developing pharmacological approach to study translational control by eIF1A



דבורה חיון
Deborah Hayoun

תואר שני במדעי החיים
בהדרכת פרופ' מיכל שרון

MSc in Life Sciences
Advisor: Prof. Michal Sharon

Thesis:

Developing native mass spectrometry methods for the study of protein interactions and protein heterogeneity



שחר הגי
Shahar Hegyi

תואר שני במדעי הכימיה
בהדרכת פרופ' איתי הלוי

MSc in Chemical Sciences
Advisor: Prof. Itay Halevy

Thesis:

Understanding microscale isotopic patterns in pyrite using a two-dimensional reaction-diffusion model



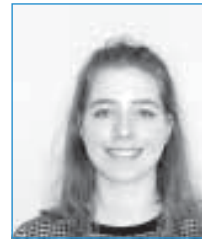
עדי הרמן
Adi Herman

תואר שני במדעי הכימיה
בהדרכת פרופ' רוני נוימן

MSc in Chemical Sciences
Advisor: Prof. Ronny Neumann

Thesis:

Electrocatalytic epoxidation and baeyer-villiger oxidation reactions by in situ formation of hydrogen peroxide from water



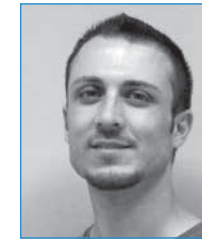
דינה הוכהאוזר
Dina Hochhauser

תואר שני במדעי החיים
בהדרכת פרופ' רותם שורק

MSc in Life Sciences
Advisor: Prof. Rotem Sorek

Thesis:

Exploring the anti-phage potential of diversity-generating retroelements



סימון ג'יני
Simon Jini

תואר שני במדעי החיים
בהדרכת פרופ' יחיאל שי

MSc in Life Sciences
Advisor: Prof. Yechiel Shai

Thesis:

Inhibition of Toll - like receptors activation in primary human T - cells by the HIV-1 gp41 - TMD



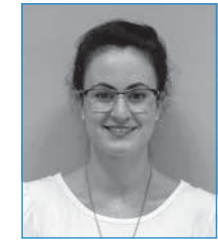
טל קראדי
Tal Karady

תואר שני במתמטיקה ומדעי המחשב
בהדרכת פרופ' ערן סגל

MSc in Mathematics and Computer Science
Advisor: Prof. Eran Segal

Thesis:

Evolution and transmission in the human gut microbiota



שירי קרג'אך
Shiri Karagach

תואר שני במדעי הכימיה
בהדרכת פרופ' נעם סובל

MSc in Chemical Sciences
Advisor: Prof. Noam Sobel

Thesis:

The smell of fear



עידו אירני
Ido Irani

תואר שני במדעי הפיזיקה
בהדרכת פרופ' אבישי גל-ימים

MSc in Physical Sciences
Advisor: Prof. Avishay Gal-Yam

Thesis:

SN 2016hil - A type II supernova in the remote outskirts of an elliptical host



רוז מרגרט ארווין
Rose Margaret Irwin

תואר שני במדעי הכימיה
בהדרכת ד"ר רינה רוזנצוויג
ד"ר הגן הופמן

MSc in Chemical Sciences
Advisors: Dr. Rina Rosenzweig
Dr. Hagen Hofmann

Thesis:

Characterizing tau aggregation prevention by ATP-independent chaperones



תמר גאנה
Tamar Jana

תואר שני במדעי החיים
בהדרכת פרופ' נעמה ברקאי

MSc in Life Sciences
Advisor: Prof. Naama Barkai

Thesis:

Intrinsically disordered regions direct transcription factor binding specificity through distributed sensing



מיכאל כץ
Michael Katz

תואר שני במדעי הכימיה
בהדרכת ד"ר רון דיסקין

MSc in Chemical Sciences
Advisor: Dr. Ron Diskin

Thesis:

Characterization of Lassa virus's glycoprotein complex alpha-dystroglycan and LARGE-1 to determine mechanisms used for viral entry



יונתן קצנלנבוגן
Yonatan Katzenelenbogen

תואר שני במדעי החיים
בהדרכת פרופ' עידו עמית

MSc in Life Sciences
Advisor: Prof. Ido Amit

Thesis:

Characterizing tumor resident myeloid suppressor cells using simultaneous intracellular protein labeling and scRNA-seq technologies



שי קידר
Shai Keidar

תואר שני במתמטיקה ומדעי המחשב
בהדרכת פרופ' דמיטרי גורביץ

MSc in Mathematics and Computer Science
Advisor: Prof. Dmitry Gourevitch

Thesis:

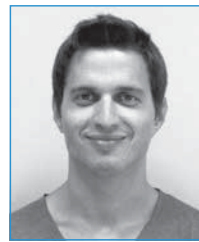


מור קניגסבוך
Mor Kenigsbuch

תואר שני במדעי החיים
בהדרכת פרופ' מיכל אייזנברג-שוורץ
פרופ' עידו עמית

MSc in Life Sciences
Advisors: Prof. Michal Schwartz
Prof. Ido Amit

Thesis:
More than myelination: Oligodendrocytes
in Alzheimer's disease- molecular
characterization interactions and effect
on pathology



לב חמלניצקי
Lev Khmelnitsky

תואר שני במדעי הכימיה
בהדרכת פרופ' דבורה פאס

MSc in Chemical Sciences
Advisor: Prof. Deborah Fass

Thesis:
Nanobody panel for multiplex labeling of
extracellular matrix



איתי קילימניק
Itay Kilimnik

תואר שני במדעי החיים
בהדרכת פרופ' יעקב חנא

MSc in Life Sciences
Advisor: Prof. Jacob (Yaqub) Hanna

Thesis:
Synergistic and redundancy of chromatin
modifiers on reprogramming



אמיר ללוש
Amir Lellouche

תואר שני במתמטיקה ומדעי המחשב
בהדרכת פרופ' אוריאל פיינה

MSc in Mathematics and Computer
Science
Advisor: Prof. Uriel Feige

Thesis:
Quantitative Group Testing and the rank
of random matrices



עמרי לסר
Omri Lesser

תואר שני במדעי הפיסיקה
בהדרכת פרופ' יובל אורג

MSc in Physical Sciences
Advisor: Prof. Yuval Oreg

Thesis:
Universal phase diagram of topological
superconductors subjected to magnetic
flux



צוף ליכטמן
Tsuf Lichtman

תואר שני במדעי הפיסיקה
בהדרכת פרופ' עדי שטרן
פרופ' ארז ברנ

MSc in Physical Sciences
Advisors: Prof. Ady Stern
Prof. Erez Berg

Thesis:
Bulk anyons as edge symmetries:
Boundary phase diagrams of
topologically ordered states

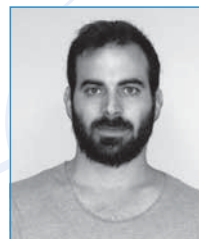


טל קליין
Tal Klein

תואר שני במדעי הכימיה
בהדרכת פרופ' אורן טל

MSc in Chemical Sciences
Advisor: Prof. Oren Tal

Thesis:
Electron-vibration interaction under
temperature gradient in single molecule
junctions



דור קורן
Dor Korn

תואר שני במדעי הפיסיקה
בהדרכת פרופ' ברק דיין

MSc in Physical Sciences
Advisor: Prof. Barak Dayan

Thesis:
Towards photonic qubit protocols
mediated by a single atom



איל קריגר
Eyal Krieger

תואר שני במדעי החיים
בהדרכת פרופ' רון מילוא

MSc in Life Sciences
Advisor: Prof. Ron Milo

Thesis:
Quantifying the Global Biomass of Wild
Mammals



גור אריה לבני אלכסיד
Gur Arie Livni Alcasid

תואר שני בהוראת המדעים
בהדרכת פרופ' ענת ירדן

MSc in Science Teaching
Advisor: Prof. Anat Yarden

Thesis:
Characterizing students' use of
mechanistic reasoning to explain allele
relationships



איליי לוז
Ilay Luz

תואר שני במתמטיקה ומדעי המחשב
בהדרכת פרופ' רונן בצרי

MSc in Mathematics and Computer
Science
Advisor: Prof. Ronen Basri

Thesis:
Learning algebraic multigrid using graph
neural networks



ליאור מימון
Lior Maimon

תואר שני במדעי החיים
בהדרכת פרופ' אורי אלון

MSc in Life Sciences
Advisor: Prof. Uri Alon

Thesis:
Hair cortisol dynamics in humans and
the slow timescales of the HPA axis



שירן מימון
Shiran Maimon

תואר שני במדעי החיים
בהדרכת פרופ' אירית שניא

MSc in Life Sciences
Advisor: Prof. Irit Sagi

Thesis:
Designing and characterization of novel
ADAM8 pro-domain inhibitors



גילי מיתקי
Gili Mitki

תואר שני במתמטיקה ומדעי המחשב
בהדרכת פרופ' שחר דובזינסקי
פרופ' אביעזרי פּרנקל

MSc in Mathematics and Computer
Science
Advisors: Prof. Shahar Dobzinski
Prof. Aviezri Fraenkel

Thesis:
Chomp-Insights variations and sum of
games



פבל מוסטוב
Pavel Mostov

תואר שני במדעי הפיסיקה
בהדרכת פרופ' רועי חיים בר זיו

MSc in Physical Sciences
Advisor: Prof. Roy Bar-Ziv

Thesis:
Two-dimensional networks of nonlinear
genetic oscillators on a chip



אור פרדיס
Orr Paradise

תואר שני במתמטיקה ומדעי המחשב
בהדרכת פרופ' עודד גולדרייך

MSc in Mathematics and Computer
Science
Advisor: Prof. Oded Goldreich

Thesis:
Smooth and Strong PCPs

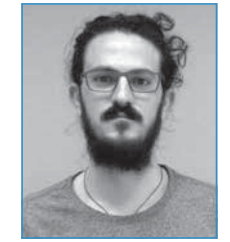


ולדיסלבה פצ'וק
Vladyslava Pechuk

תואר שני במדעי החיים
בהדרכת ד"ר מיטל אורן

MSc in Life Sciences
Advisor: Dr. Meital Oren-Suissa

Thesis:
Decipher the properties of sex-shared
yet dimorphic neuronal circuits



גיא פלס
Guy Peles

תואר שני במדעי החיים
בהדרכת פרופ' ניל לבקוביץ

MSc in Life Sciences
Advisor: Prof. Gil Levkowitz

Thesis:
Investigation of the HPA axis feedback
regulation and implication to stress
related behavior in early development



שי נחום
Shai Nahum

תואר שני במדעי החיים
בהדרכת פרופ' מיילק ווקר

MSc in Life Sciences
Advisor: Prof. Michael Walker

Thesis:
Role of ketone bodies in regulating
insulin secretion by pancreatic beta cells



זאנה אורלובה
Zhanna Orlova

תואר שני במדעי החיים
בהדרכת ד"ר איתי תירוש

MSc in Life Sciences
Advisor: Dr. Itay Tirosh

Thesis:
Regulation and spatial expression of
partial mesenchymal transitions in head
and neck cancer



רלה עובד
Rela Oved

תואר שני במדעי החיים
בהדרכת ד"ר אילנה קולודקין-גל

MSc in Life Sciences
Advisor: Dr. Ilana Kolodkin-Gal

Thesis:
A differential response to fermentation
and its products explains the fitness
advantage of probiotic bacteria



טל פרץ
Tal Peretz

תואר שני במתמטיקה ומדעי המחשב
בהדרכת פרופ' עופר זיתוני

MSc in Mathematics and Computer
Science
Advisor: Prof. Ofer Zeitouni

Thesis:
Moderate deviations for the self-
normalized random walk in random
scenery



רנן פרלמן
Renen Perlman

תואר שני במתמטיקה ומדעי המחשב
בהדרכת פרופ' צביקה ברקוסקי

MSc in Mathematics and Computer
Science
Advisor: Prof. Zvika Brakerski

Thesis:
Lattice-based fully dynamic multi-key FHE



גל פרלמן
Gal Perlman

תואר שני במדעי החיים
בהדרכת פרופ' ערן סגל

MSc in Life Sciences
Advisor: Prof. Eran Segal

Thesis:
Influence of gut microbiome via serum
metabolites in Multiple Sclerosis patients



גל פרלמוטר
Gal Perlmoter

תואר שני במדעי החיים
בהדרכת פרופ' קרינה יניב

MSc in Life Sciences
Advisor: Prof. Karina Yaniv

Thesis:

Deciphering the interactions between the lymphatic system and the extracellular matrix during heart regeneration



מיכל פרפיניאל
Michal Perpinial

תואר שני במדעי החיים
בהדרכת פרופ' עידית שחר

MSc in Life Sciences
Advisor: Prof. Idit Shachar

Thesis:

The role of CD84 in mediating Regulatory B cells in different hematological malignancies



גור פרי
Gur Perri

תואר שני במתמטיקה ומדעי המחשב
בהדרכת ד"ר מרב ברכה פרטר

MSc in Mathematics and Computer Science
Advisor: Dr. Merav Parter

Thesis:

The computational cost of asynchronous neural communication



גל רביב
Gal Raviv

תואר שני במדעי הכימיה
בהדרכת ד"ר רון דיסקין

MSc in Chemical Sciences
Advisor: Dr. Ron Diskin

Thesis:

Determining the structure and interaction of Type-I Mycobacterium tuberculosis fatty acid synthase with pyrazinamide inhibitor



אמיר רז
Amir Raz

תואר שני במדעי הפיסיקה
בהדרכת פרופ' מיכה ברכוז

MSc in Physical Sciences
Advisor: Prof. Micha Berkooz

Thesis:

The Double Scaled Limit of the N=2 Super-Symmetric Sachdev-Ye-Kitaiv Model



הדר רייסין צור
Hadar Reisin-Tzur

תואר שני במדעי החיים
בהדרכת פרופ' מייק פיינזילבר

MSc in Life Sciences
Advisor: Prof. Mike Fainzilber

Thesis:

The mTOR axonal mRNP complex



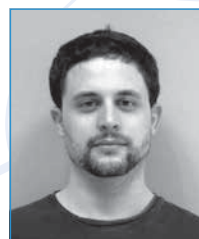
זואי פנקס
Zoe Pinkas

תואר שני במדעי החיים
בהדרכת פרופ' אסף אהרוני

MSc in Life Sciences
Advisor: Prof. Asaph Aharoni

Thesis:

Identifying genes involved in phytocannabinoids biosynthesis



גיל פינסקי
Gil Pinsky

תואר שני במתמטיקה ומדעי המחשב
בהדרכת פרופ' מיכל אירני

MSc in Mathematics and Computer Science
Advisor: Prof. Michal Irani

Thesis:

Deep patch prior



ליעד פולק צוקרמן
Liad Pollak Zuckerman

תואר שני במתמטיקה ומדעי המחשב
בהדרכת פרופ' מיכל אירני

MSc in Mathematics and Computer Science
Advisor: Prof. Michal Irani

Thesis:

Zero-shot super-resolution of volumetric data



בטינה ריינה
Betina Reyna

תואר שני במדעי הכימיה
בהדרכת פרופ' ערן אופק

MSc in Chemical Sciences
Advisor: Prof. Eran Ofek

Thesis:

Towards high precision photometry through ground-based observations



מיכל רויטמן
Michal Roitman

תואר שני במדעי החיים
בהדרכת פרופ' משה אורן

MSc in Life Sciences
Advisor: Prof. Moshe Oren

Thesis:

The distinct role of p53 in promoting the expression of CTGF and other Hippo target genes in mutant H-RAS transformed cells



דבורה רוטברד
Deborah Rothbard

תואר שני במדעי החיים
בהדרכת פרופ' טוני פוטרמן

MSc in Life Sciences
Advisor: Prof. Tony Futerman

Thesis:

Innate immune response in neuronopathic Gaucher disease promotes resistance against acute viral infection of the CNS

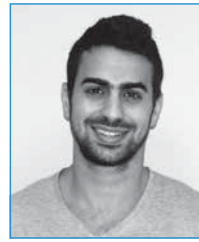


גטה רוזנצווייג
Getta Rozentsveig

תואר שני במדעי הארכיאולוגיה
בהדרכת פרופ' אליזבטה בוארטו

MSc in Archaeological Science
Advisor: Prof. Elisabetta Boaretto

Thesis:
Absolute chronology for the Ghassulian culture: Case studies from Ashkelon Agamim and Tel Sheva and their implication on the overall chronological framework



גילעד שדה
Gilad Sade

תואר שני במדעי הפיסיקה
בהדרכת פרופ' אלי וקסמן

MSc in Physical Sciences
Advisor: Prof. Eli Waxman

Thesis:
Radio & X-ray afterglow following a neutron star merger event



שריאל שרה סלמון
Sariel Sara Salmon

תואר שני במדעי החיים
בהדרכת פרופ' אהוד אחישר

MSc in Life Sciences
Advisor: Prof. Ehud Ahissar

Thesis:
Dependency of SpVi sensory information on patterns of artificial whisking and touch



נועם שילר
Noam Schiller

תואר שני במדעי הפיסיקה
בהדרכת פרופ' יובל אורג

MSc in Physical Sciences
Advisor: Prof. Yuval Oreg

Thesis:
Transport and thermodynamic properties of strongly interacting topological phases



נועם שגב
Noam Segev

תואר שני במדעי הפיסיקה
בהדרכת פרופ' ערן אופק

MSc in Physical Sciences
Advisor: Prof. Eran Ofek

Thesis:
Towards high precision ground based astrometry



הדר סרבינסקי
Hadar Serviansky

תואר שני במתמטיקה ומדעי המחשב
בהדרכת פרופ' ירון ליפמן

MSc in Mathematics and Computer Science
Advisor: Prof. Yaron Lipman

Thesis:
Learning graphs from sets and provably powerful graph networks



עינב סרפיאן-תמם
Einav Sarafian-Tamam

תואר שני במדעי החיים
בהדרכת פרופ' עפר פינרמן

MSc in Life Sciences
Advisor: Prof. Ofer Feinerman

Thesis:
Regulation of nutrient distribution in ant colonies



תמר שכטר
Tamar Schechter

תואר שני בהוראת המדעים
בהדרכת פרופ' ניר אוריון

MSc in Science Teaching
Advisor: Prof. Nir Orion

Thesis:
The interrelationships between social well-being and the learning process in the high school Earth Sciences program



נדב שר
Nadav Scher

תואר שני במדעי הכימיה
בהדרכת ד"ר אורי אבינעם

MSc in Chemical Sciences
Advisor: Dr. Ori Avinoam

Thesis:
Development of correlative light and volume electron microscopy approach to study membrane remodelling



רן שחר
Ran Shachar

תואר שני במדעי החיים
בהדרכת ד"ר שרגא שוורץ

MSc in Life Sciences
Advisor: Dr. Schraga Schwartz

Thesis:
Characterizing the RNA N6-methyladenosine across yeast species and selected hybrids: Patterns Mechanism and Evolutionary Analysis



נעה שחר
Noa Shahar

תואר שני במתמטיקה ומדעי המחשב
בהדרכת ד"ר מרב ברכה פרטר

MSc in Mathematics and Computer Science
Advisor: Dr. Merav Parter

Thesis:
Fault tolerant distance preservers with vertex faults



יניב שחר
Yaniv Shahar

תואר שני במתמטיקה ומדעי המחשב
בהדרכת פרופ' אורי בדר
פרופ' צליל סלע

MSc in Mathematics and Computer Science
Advisors: Prof. Uri Bader
Prof. Zlil Sela

Thesis:
On estimations of exponential growth rates of hyperbolic groups



מלינה שמשום
Melina Shamshoum

תואר שני במדעי החיים
בהדרכת פרופ' רון מילוא

MSc in Life Sciences
Advisor: Prof. Ron Milo

Thesis:
Searching for the fastest rubisco in nature



דותן שניו
Dotan Shaniv

תואר שני במדעי הכימיה
בהדרכת פרופ' בריאן ברקוביץ

MSc in Chemical Sciences
Advisor: Prof. Brian Berkowitz

Thesis:
Effects of particle size and surface chemistry on plastic nanoparticle transport in saturated natural porous media



רותם שאול
Rotem Shaul

תואר שני במתמטיקה ומדעי המחשב
בהדרכת פרופ' רונן בצרי

MSc in Mathematics and Computer Science
Advisor: Prof. Ronen Basri

Thesis:
Semantic segmentation of difficult objects from stereo images



עידו שירת
Ido Shirat

תואר שני במדעי החיים
בהדרכת פרופ' גיל לבקוביץ

MSc in Life Sciences
Advisor: Prof. Gil Levkowitz

Thesis:
Stress resilience heritability in zebrafish



אלון שטריקמן
Alon Shtrikman

תואר שני במדעי החיים
בהדרכת ד"ר יונתן שטלצר

MSc in Life Sciences
Advisor: Dr. Yonatan Stelzer

Thesis:
Studying the role of imprinting changes in normal development and in disease



רואי סינוף
Roi Sinoff

תואר שני במתמטיקה ומדעי המחשב
בהדרכת פרופ' רוברט קראוטגמר

MSc in Mathematics and Computer Science
Advisor: Prof. Robert Krauthgamer

Thesis:
Schatten norms in matrix streams: Hello sparsity goodbye dimension



לאה שביט
Leah Shavitt

תואר שני במדעי הכימיה
בהדרכת פרופ' איגור לובומירסקי
פרופ' מאיר להב

MSc in Chemical Sciences
Advisors: Prof. Igor Lubomirsky
Prof. Meir Lahav

Thesis:
A molecular approach to heterogeneous electrofreezing of water



פאדי שיבאן
Fadi Sheban

תואר שני במדעי החיים
בהדרכת פרופ' עפר יזרר
פרופ' עידו עמית

MSc in Life Sciences
Advisors: Prof. Ofer Yizhar
Prof. Ido Amit

Thesis:
Neuro-immune circuits underlying pathophysiology



אנסטסיה שנקר
Anastasia Shenkar

תואר שני במדעי החיים
בהדרכת פרופ' ירדנה סמואלס

MSc in Life Sciences
Advisor: Prof. Yardena Samuels

Thesis:
Unbiased whole genome analysis for tumor cell resistance mechanisms to T cell-mediated killing in melanoma cells



רז סלוצקי
Raz Slutsky

תואר שני במתמטיקה ומדעי המחשב
בהדרכת פרופ' יצחק גלנדר

MSc in Mathematics and Computer Science
Advisor: Prof. Tsachik Gelerder

Thesis:
Volumetric bounds on the rank of lattices in Lie Groups



כרמל סוכן
Carmel Sochen

תואר שני במדעי החיים
בהדרכת פרופ' יעקב אברמסון

MSc in Life Sciences
Advisor: Prof. Jakub Abramson

Thesis:
Developmental and morphological characterization of thymic Tuft cells



יהל סופר
Yahel Soffer

תואר שני במדעי הכימיה
בהדרכת פרופ' דן אורון

MSc in Chemical Sciences
Advisor: Prof. Dan Oron

Thesis:
Resolution improvement of resonance impulsive stimulated raman spectroscopy



יעקב סולומונס
Yakov Solomons

תואר שני במדעי הפיסיקה
בהדרכת פרופ' ניר דודזון
ד"ר עופר פירסטנברג

MSc in Physical Sciences
Advisors: Prof. Nir Davidson
Dr. Ofer Firstenberg

Thesis:
Transverse drag of slow light in moving
atomic vapor



ולדיסלבה סוליאניקוב
Vladislava Solyanikov

תואר שני במדעי הכימיה
בהדרכת פרופ' דוד טנור

MSc in Chemical Sciences
Advisor: Prof. David Tannor

Thesis:
Complex trajectory approach to
distinguishing classically forbidden
processes: Toward a rigorous definition
of tunneling times



שיראל שטיינברגר
Shirel Steinberger

תואר שני במדעי החיים
בהדרכת פרופ' יוסף שאול

MSc in Life Sciences
Advisor: Prof. Yosef Shaul

Thesis:
The proteasome dynamic under stress



בר טבעון
Barr Tivon

תואר שני במדעי הכימיה
בהדרכת ד"ר ניר לונדון

MSc in Chemical Sciences
Advisor: Dr. Nir London

Thesis:
Modeling and design of covalent
peptides



אביתר טוליפמן
Evyatar Tulipman

תואר שני במדעי הפיסיקה
בהדרכת פרופ' ארז ברנ

MSc in Physical Sciences
Advisor: Prof. Erez Berg

Thesis:
Strongly coupled quantum phonon fluid
in a solvable model



דנית טואיטו
Danit Twito

תואר שני במדעי החיים
בהדרכת פרופ' נדעון שרייבר

MSc in Life Sciences
Advisor: Prof. Gideon Schreiber

Thesis:
Understanding the molecular basis for
differential type 1 interferon signaling



אורי טייכמן
Ori Taichman

תואר שני במדעי הכימיה
בהדרכת פרופ' איגור לובומירסקי

MSc in Chemical Sciences
Advisor: Prof. Igor Lubomirsky

Thesis:
Understanding the thermal pathway for
decomposition of COS

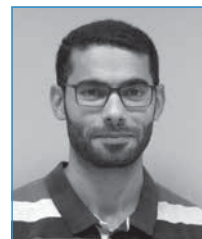


רותם טל
Rotem Tal

תואר שני במדעי החיים
בהדרכת ד"ר איתי תירוש

MSc in Life Sciences
Advisor: Dr. Itay Tirosh

Thesis:
Cellular senescence as a source of intra-
tumor heterogeneity



שאדי טויל
Shadi Tawil

תואר שני במדעי החיים
בהדרכת פרופ' איתן גרוס

MSc in Life Sciences
Advisor: Prof. Atan Gross

Thesis:
MTCH2 regulates mitochondrial fission
via the DRP1 adaptor proteins MiD49
and MiD51



ירדן צור
Yarden Tzur

תואר שני במדעי החיים
בהדרכת פרופ' מייק פיינזילבר

MSc in Life Sciences
Advisor: Prof. Mike Fainzilber

Thesis:
The role of eIF5B in the regulation of
neuronal local translation in axons



ספיר וקנין
Sapir Vaknin

תואר שני במדעי החיים
בהדרכת פרופ' עידית שחר

MSc in Life Sciences
Advisor: Prof. Idit Shachar

Thesis:
The role and function of SLAMF5
receptor on B/T cell in Melanoma



איתי וקנין
Itay Vaknin

תואר שני במדעי החיים
בהדרכת פרופ' יוסף ירדן

MSc in Life Sciences
Advisor: Prof. Yosef Yarden

Thesis:
HER3 shedding insights for lung cancer
targeted therapy



ניל ווקסלר
Neil Vexler

תואר שני במתמטיקה ומדעי המחשב
בהדרכת פרופ' מוני נאור

MSc in Mathematics and Computer
Science
Advisor: Prof. Moni Naor

Thesis:

Can two walk together: Privacy enhancing
methods and preventing tracking of
users



יהונתן וירניק
Yehonatan Viernik

תואר שני במדעי הפיסיקה
בהדרכת פרופ' גלעד פרוז
פרופ' יוסף ניר

MSc in Physical Sciences
Advisors: Prof. Gilad Perez
Prof. Yosef Nir

Thesis:

CP violation in SMEFT: Electroweak
baryogenesis eEDM and higgs physics



רון כרמל וינשטוק
Ron Carmel Vinestock

תואר שני במדעי החיים
בהדרכת פרופ' אלעזר זלצר

MSc in Life Sciences
Advisor: Prof. Elazar Zelzer

Thesis:

Achilles enthesis healing processes



לולו וינר
Lulu Winer

תואר שני במדעי הכימיה
בהדרכת פרופ' איתן ביבי

MSc in Chemical Sciences
Advisor: Prof. Eitan Bibi

Thesis:

Identification of protein-protein
interactions mediating the co-
translational membrane targeting of FtsY



אלעד יחזקאל
Elad Yehezkel

תואר שני במתמטיקה ומדעי המחשב
בהדרכת פרופ' דוד פלג

MSc in Mathematics and Computer
Science
Advisor: Prof. David Peleg

Thesis:

Selected neighbor degree tree realization



גדעון יופה
Gideon Yoffe

תואר שני במדעי הכימיה
בהדרכת פרופ' עוזד אהרונסון

MSc in Chemical Sciences
Advisor: Prof. Oded Aharonson

Thesis:

A photodynamical model for uniform
and precise planetary parameters
determination in Kepler systems



אסף ווליוביץ
Assaf Voliovich

תואר שני במדעי הפיסיקה
בהדרכת פרופ' ארוז ברג
פרופ' יובל אורג

MSc in Physical Sciences
Advisors: Prof. Erez Berg
Prof. Yuval Oreg

Thesis:

Interaction effects on gap closing
transitions in carbon nanotubes



נטליה ובר
Natalya Weber

תואר שני במדעי הכימיה
בהדרכת פרופ' דוד טנור

MSc in Chemical Sciences
Advisor: Prof. David Tannor

Thesis:

Reexamination of the Variable Phase
Method for studying quantum scattering



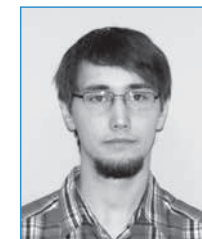
שרה וויליאמסון
Sarah Williamson

תואר שני במתמטיקה ומדעי המחשב
בהדרכת פרופ' מריה גורליק

MSc in Mathematics and Computer
Science
Advisor: Prof. Maria Gorelik

Thesis:

On a family of non-weight modules over
Virasoro-type Lie (super)algebras



מיקאילו יוטושי
Mykhailo Yutushui

תואר שני במדעי הפיסיקה
בהדרכת ד"ר דוד מרוס

MSc in Physical Sciences
Advisor: Dr. David Mross

Thesis:

Large system size studies of PH-Pfaffian
trial wave function



רועי זמיר
Roei Zamir

תואר שני במתמטיקה ומדעי המחשב
בהדרכת פרופ' רונן בצרי

MSc in Mathematics and Computer
Science
Advisor: Prof. Ronen Basri

Thesis:

Segmenting calcifications in
mammograms using deep learning and
toward temporal change detection



ענבל זיגדון
Inbal Zigdon

תואר שני במדעי החיים
בהדרכת ד"ר יפעת מרבל

MSc in Life Sciences
Advisor: Dr. Yifat Merbl

Thesis:

Characterization of nuclear and cytosolic
substrates of localized degradation and
UPS components of Golgi Apparatus
localized degradation

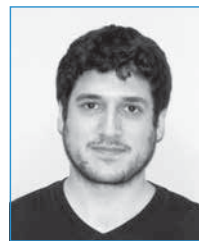


יעל זיגלמן
Yael Zigelman

תואר שני במדעי החיים
בהדרכת פרופ' ערן הורנשטיין

MSc in Life Sciences
Advisor: Prof. Eran Hornstein

Thesis:
Deciphering stress granules
transcriptome in health and in
Amyotrophic Lateral Sclerosis (ALS)



ערן זוהר
Eran Zohar

תואר שני במדעי החיים
בהדרכת ד"ר איבו שפינל

MSc in Life Sciences
Advisor: Dr. Ivo Spiegel

Thesis:
IGF1 promotes inhibition selectively
onto VIP interneurons in the adult visual
cortex



אייל זולר
Eyal Zoler

תואר שני במדעי הכימיה
בהדרכת פרופ' גדעון שרייבר

MSc in Chemical Sciences
Advisor: Prof. Gideon Schreiber

Thesis:
Interferon type I signaling



אורי זונדינר
Uri Zondiner

תואר שני במדעי הפיזיקה
בהדרכת פרופ' שחל אילני

MSc in Physical Sciences
Advisor: Prof. Shahal Ilani

Thesis:
Local electrostatic study of 'magic angle'
Twisted Bilayer Graphene



Recipients of MSc without thesis in Science Teaching

The Feinberg Graduate School's master's degree program without thesis in science teaching was launched in 2008, as a joint initiative between the Weizmann Institute and the Rothschild Caesarea Foundation. The mission of this program is to improve the quality of science and mathematics teaching in Israel, by encouraging excellence among educators and providing them with the skills needed for leadership, both in the classroom and beyond. The master's program is intended for outstanding teachers of math and science who already hold at least a first degree in biology, chemistry, mathematics, or physics.

This is a two-year framework in which participants—with the support and encouragement of the schools in which they teach—are expected to devote two full days each week to their studies, in parallel with their continued work in the classroom. The curriculum includes the enrichment of participants' basic scientific knowledge (discipline-specific and interdisciplinary topics) and familiarity with new developments in scientific research, the acquisition of innovative teaching skills and strategies, and participation in hands-on seminars in Weizmann Institute labs. The course curriculum, created specifically for this program, was designed to match the unique needs of science and math educators. Many of the classes are taught by members of the Weizmann Institute faculty.

Islam Abo Khalifa
Nashat Abo Yonis
Rachel Amstibovitsky
Hadar Atias
Dafna Azoulay
Dvora Bachar
Sharon Batyr
Oria Ben-Lulu
Efrat Blau Barak
Orly Eliyahu
Yosef Hayoun
David Levy
Hasan Mahajna
Ayelet Odani
Shira Politzer
Irina Raynin
Inna Schwartzman
Ofer Shafir
Gila Shvets
Yaniv Sorani
Nadia Takrouri-Abutoama
Almog Vardi
Nirit Vardi
Naama Wolf
Maisa Zoabi



איסלם אבו חליפה
Islam Abo Khalifa

תואר שני ללא תזה בהוראת המדעים
MSc without thesis in Science Teaching



נשאת אבו יונס
Nashat Abo Yonis

תואר שני ללא תזה בהוראת המדעים
MSc without thesis in Science Teaching



רחל אמסטיבוביטסקי
Rachel Amstibovitsky

תואר שני ללא תזה בהוראת המדעים
MSc without thesis in Science Teaching



אורלי אליהו
Orly Eliyahu

תואר שני ללא תזה בהוראת המדעים
MSc without thesis in Science Teaching



יוסף חיון
Yosef Hayoun

תואר שני ללא תזה בהוראת המדעים
MSc without thesis in Science Teaching



דוד לוי
David Levy

תואר שני ללא תזה בהוראת המדעים
MSc without thesis in Science Teaching



הדר אטיאס
Hadar Atias

תואר שני ללא תזה בהוראת המדעים
MSc without thesis in Science Teaching



דפנה אזולאי
Dafna Azoulay

תואר שני ללא תזה בהוראת המדעים
MSc without thesis in Science Teaching



דבורה בכר
Dvora Bachar

תואר שני ללא תזה בהוראת המדעים
MSc without thesis in Science Teaching



חסן מחאג'נה
Hasan Mahajna

תואר שני ללא תזה בהוראת המדעים
MSc without thesis in Science Teaching



איילת עודאני
Ayelet Odani

תואר שני ללא תזה בהוראת המדעים
MSc without thesis in Science Teaching



שירה פוליצר
Shira Politzer

תואר שני ללא תזה בהוראת המדעים
MSc without thesis in Science Teaching



שרון בטיר
Sharon Batyr

תואר שני ללא תזה בהוראת המדעים
MSc without thesis in Science Teaching



אוריה בן לולו
Oria Ben-Lulu

תואר שני ללא תזה בהוראת המדעים
MSc without thesis in Science Teaching



אפרת בלאו ברק
Efrat Blau Barak

תואר שני ללא תזה בהוראת המדעים
MSc without thesis in Science Teaching



אירינה ריינין
Irina Raynin

תואר שני ללא תזה בהוראת המדעים
MSc without thesis in Science Teaching



אינה שוורצמן
Inna Schwartzman

תואר שני ללא תזה בהוראת המדעים
MSc without thesis in Science Teaching



עפר שפיר
Ofer Shafir

תואר שני ללא תזה בהוראת המדעים
MSc without thesis in Science Teaching



גילה שוויץ
Gila Shvets

תואר שני ללא תזה בהוראת המדעים
MSc without thesis in Science Teaching



יניב סורני
Yaniv Sorani

תואר שני ללא תזה בהוראת המדעים
MSc without thesis in Science Teaching



נאדיה תקרורי-אבו טועמה
Nadia Takrouri-Abutoama

תואר שני ללא תזה בהוראת המדעים
MSc without thesis in Science Teaching



אלמוג ורדי
Almog Vardi

תואר שני ללא תזה בהוראת המדעים
MSc without thesis in Science Teaching



נרית ורדי
Nirit Vardi

תואר שני ללא תזה בהוראת המדעים
MSc without thesis in Science Teaching



נעמה וולף
Naama Wolf

תואר שני ללא תזה בהוראת המדעים
MSc without thesis in Science Teaching



מיסא זועבי
Maisa Zoabi

תואר שני ללא תזה בהוראת המדעים
MSc without thesis in Science Teaching



With gratitude to the supporters of the Feinberg Graduate School at the Weizmann Institute of Science

The Weizmann Institute of Science and the students and staff of the Feinberg Graduate School are grateful to the many friends throughout the world who have generously funded the graduate studies program.

The Weizmann Institute created five Research Schools affiliated with its five Faculties to expand and enhance its graduate education. These strategic investments provide students with greater opportunities for personal development and independent research, expanded contact with the international science community, and even greater exposure to world leaders in their fields of study.

The **Lorry I. Lokey Research School of Biochemical Science** was established by California entrepreneur and philanthropist Lorry Lokey in 2007. It provides students in biochemistry, at all levels, with the tools and opportunities needed to excel.

Two brothers, Maurizio from Geneva and Solo from Milan, and their families founded the **Solo Dwek and Maurizio Dwek Research School of Chemical Science** in 2008 to provide students in chemical sciences necessities such as laptops, software, journal subscriptions, and conference travel expenses.

Former Chair of the International Board of the Weizmann Institute, financier Mandy Moross of London established the **Moross Research School for Mathematics and Computer Science** in 2009. The Moross Research School sponsors special guest lectures, student-led workshops, and other enrichment activities for students of mathematics and computer sciences.

The **Ekard Research School of Biological Sciences** was also established in 2009, through an anonymous donation from a member of the Weizmann Institute International Board. The Ekard School provides funding to attract guest lecturers and visiting scientists working in emerging areas of biology.

The **André Deloro Research School of Physical Science** was established in 2013 by the Adelis Foundation, founded by French entrepreneur and philanthropist André Deloro. The Deloro Research School works in tandem with the André Deloro Institute for Space and Optics Research at the Weizmann Institute to explore the nature of the universe from the smallest particles to the most distant galaxies.

The David Lopatie Fellows Up to four David Lopatie Fellows are selected each year by the Dean of the Feinberg Graduate School from among the new MSc students in the regular track. They are selected based on exceptional academic performance in their undergraduate studies. The prestigious award includes a personal travel allowance for scientific meetings, workshops, and more.

Scholarships are precious gifts—in essence, gifts of knowledge. They enable our students to concentrate on their studies, freeing them to devote their full energies to coursework and laboratory research. This steadfast encouragement has borne fruit among the many scientists throughout the world who began their careers at the Weizmann Institute. Today's graduates are tomorrow's scientific leaders.



Scholarship Awards

Postdoctoral Scholarships in Perpetuity

Nurit Guter Scholarship

Established in 2009 by Halina Gutter, Israel

Paulo Pinheiro de Andrade Fellowship

Established in 2019 by Marcos Pinheiro de Andrade and Vanessa Buchheim, London, United Kingdom

Lance and Brenda Feis Post Doctoral Fellowship Fund

Established in 2019 by Lawrence Feis, Winnetka, Illinois

Sir Charles Clore-Weizmann Fund Post-Doctoral Fellowships

Established in 1980 by the Clore - Israel Foundation

Hugh & Sandra Stone Fellowships

Established in 1983 by Sandra D. Stone, Naples, Florida

Harold & Jean Grossman Postdoctoral Fellowship in Cancer Research

Established in 1987 by the Harold and Jean Grossman Family Foundation

Louis and Anita Perlman Family Foundation Post Doctoral Fellowship

Established in 1988 by the Perlman Family Foundation, Founded by Louis L. and Anita M. Perlman

Edith and Edward F. Anixter Postdoctoral Fellowship

Established in 1989 by the Edward F. Anixter Family Foundation

Norman Sosnow Post Doctoral Fellowship

Established in 1984 by the E.C. Sosnow Charitable Trust

Anne Stone Post Doctoral Fellowship

Established in 1991 by the Stone Family Charitable Foundation

Hugh David Stone Post Doctoral Scholarship

Established in 1993 by Charlotte and Ted Teplow, Wrentham, Massachusetts

Arthur Kaplan Post Doctoral Fellowship

Established in 1993 by Arthur Kaplan

David Aftalion Post Doctoral Fellowship for Biomedical Research

Established in 1995 by Florin Aftalion, Paris, France

Pacific Theatres Foundation Post-doctoral Fellowship

Established in 1995 by Michael R. Forman, Bel Air, California

Reich Postdoctoral Fellowship in Cancer Research

Established in 1997 by the Henry S. and Anne Reich Family Foundation

Dr. Robert G. Picard Postdoctoral Fellowship

Established in 1998 by Nathan Rubinson Foundation

Sieff Postdoctoral Fellowship

Established in 1998 by the Marcus Sieff Foundation, United Kingdom

Nathan & Leah DeWoskin Memorial Postdoctoral Fellowship in Cancer Research

Established in 2004 by Mr. and Mrs. William DeWoskin, Chicago, Illinois

Etingin Scholars Program Endowment Fund

Established in 1998 by Maks and Rochelle Etingin, New York, New York

Joseph W. and Emily J. Bernstein Post-Doctoral Fellowship Endowment Fund

Established in 2007 by the Amber Foundation

Armando and Maria Jinich Postdoctoral Fellowship

Established in 2010 by Armando and Maria Jinich, Mexico

Martin Kushner Schnur Post Doctoral Fellowship

Established in 2011 by Martin Kushner Schnur, Mexico

Joseph and Sabina Ferber Post Doctoral Fellowship in Physics and Computer Science

Established in 2014 by Isaac Ferber, Norwich, Connecticut

The Dr. A. Edward Friedmann Postdoctoral Fellowships in Mathematics

Established in 2016 by the Family of Dr. A. Edward Friedmann

Mora Miriam Rozen Gerber Postdoctoral Fellowship

Established in 2017 by the TVML Foundation

The Dov Keren-Ya'ar Fellowship

Established in 2014

Scholarship Awards

Annual and Semester Postdoctoral Scholarships

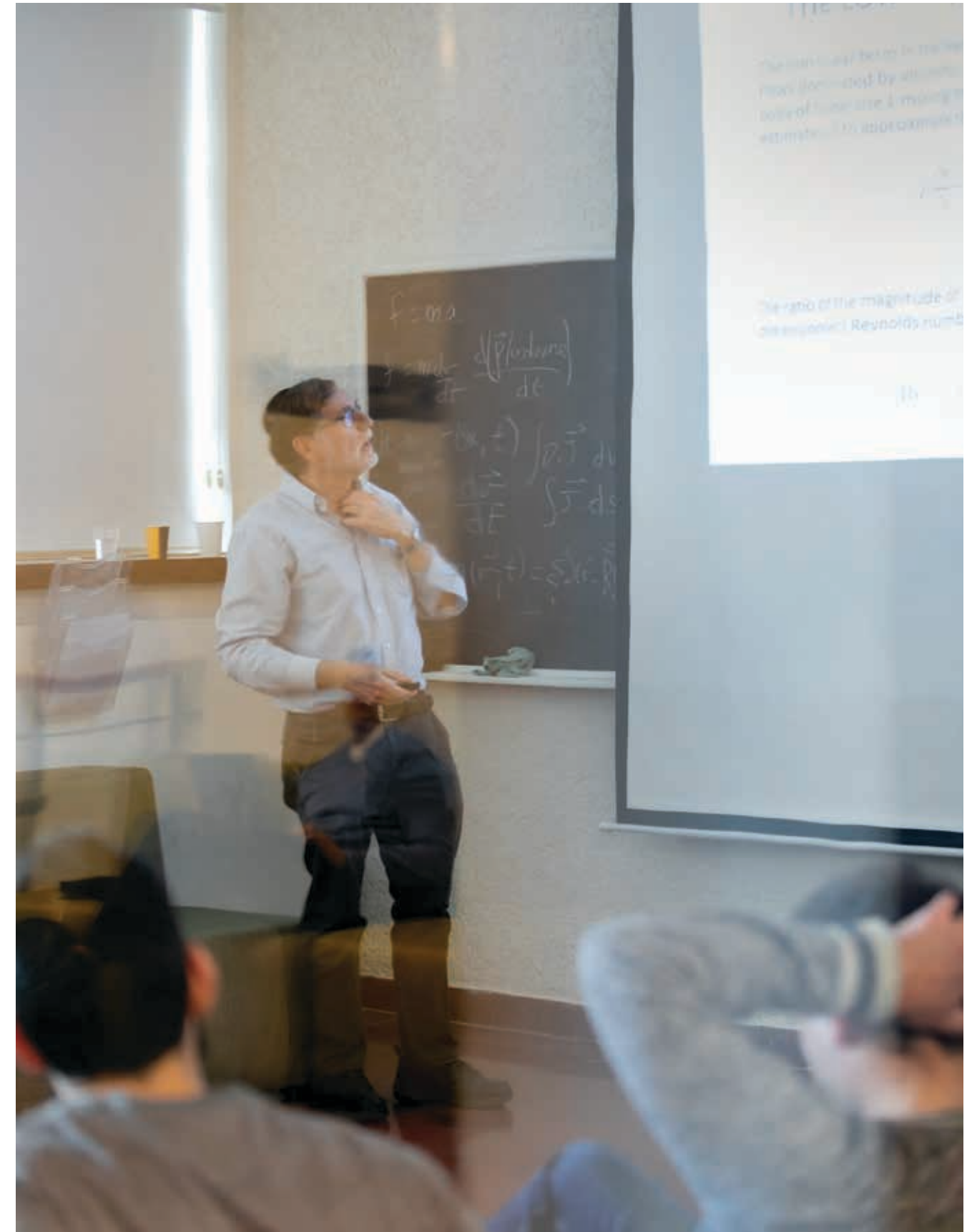
Alon Kaplan Post-doc Scholarship
Established in 2014 by
Alon Kaplan, Israel

Honey Sherman Postdoctoral Program for Advancing Women in Science Award
Established in 2018 by the
Sherman Foundation, Canada

Weizmann Institute "la Caixa" Foundation Postdoctoral Fellowships
Established in 2019 by
la Caixa Foundation, Spain

Dr. George R. Martin Postdoctoral Fund
Established in 2020 by
Dr. George R. Martin,
Vallejo, California

The Tamara Harlap Post Doc Fellowship
Established in 2010 by
Tamara Harlap, Israel



Scholarship Awards

PhD Scholarships in Perpetuity

The Kurt and Hildegard Adler Scholarships

Established in 2014 through the Kurt S. Adler Trust Estate, Los Angeles, California

The Lila and Israel Jacob Alter Scholarship

Established in 2008 through a bequest of Israel Jacob Alter, Israel

The Cindy Rose Anderson Scholarship Endowment Fund

Established in 2007 by Cindy Rose Anderson, Palm Beach, Florida

The Dr. Lester Aronberg Scholarship in Perpetuity

Established in 1981 by the Dr. Lester Aronberg Foundation, Chicago, Illinois

The Jacob and Sonia Hager Axelrad Endowed Doctoral Scholarship Fund for Cancer Research

Established in 1999 through a bequest of Sonia Hager Axelrad, New York

The Hanan Bar-On Memorial Fund

Established in 2004 by the Weizmann Institute of Science, in honor and in memory of Hanan Bar-On, former Vice President of the Weizmann Institute, Rehovot, Israel

The Shlomo Beilitz Scholarship

Established in 1979 through a bequest of Shlomo Beilitz, Ra'anana, Israel

The Louis Bein Scholarships for Russian Students

Established in 1991 by the Louis Bein Trust, Chicago, Illinois

The Hazel Olzman Bellin Memorial Endowed PhD Scholarship in Cancer Research

Established in 2009 through a bequest of Hazel Olzman Bellin, New York

The Ursula Johanna and Fritz Werner Blumenthal Scholarships

Established in 2007 through a bequest of Ursula Johanna and Fritz Werner Blumenthal, Australia

The Irena-Ida Bogdanowicz Scholarship

Established in 1994 through a bequest of Irena-Ida Bogdanowicz, Tel Aviv, Israel

The Dr. Walter and Dr. Trude Borchardt Fund for Graduate Students and the Feinberg Graduate School

Established in 2001 through a bequest of Dr. Trude Borchardt, New York

The Jeannette and Max Bouckalter Scholarships

Established in 2009 by Jeannette and Max Bouckalter, Paris, France

The Dr. Sydney Brenner Scholarship

Established in 2015 by friends and admirers of Dr. Brenner

The Helen G. and Richard B. Bryant Scholarship Fund in Biomedical Research

Established in 2002 by Helen G. Bryant, Chicago, Illinois

The Caspe Family Scholarship

Established in 2000 by Mr. and Mrs. Lewis Caspe and the Caspe Family Foundation, Des Moines, Iowa

The Professor Arthur Charlesby Fund for Doctoral Student Scholarships and Travel Stipends

Established in 2001 by Irene Charlesby, Swindon, United Kingdom, in memory of her husband

The Dr. Rebecca Chutick and Dr. Lillian Chutick Doctoral Scholarship Fund for Immigrant Students from the Commonwealth of Independent States (CIS)

Established in 1994 through a bequest of Dr. Rebecca Chutick, New York

The Judith and Norman D. Cohen Doctoral Scholarship

Established in 2005 by Judith and Norman Cohen, New York

The Jean and Sandy Colen Doctoral Scholarship in Cancer Research

Established in 2017 by Jean and Sandy Colen, Orinda, California

The Leo A. and Sarah G. Copin Scholarship Fund

Established in 1994 through a bequest of Sarah G. Copin, Palm Beach, Florida

The Nathan and Leah DeWoskin Memorial Scholarship Fund

Established in 2004 by William DeWoskin and Doris D. Roskin, Chicago, Illinois

The Florence Edelman Scholarship in Perpetuity

Established in 1987 through a bequest of Florence Edelman, New York

The Dr. Eugene I. and Charlotte Falstein Graduate Scholarship

Established in 1997 by Charlotte R. Falstein, Chicago, Illinois

The Harold Feinstein and Bess Rae C. Feinstein Scholarship Fund for Students from the Commonwealth of Independent States (CIS)

Established in 1990 through a bequest of Bess Rae C. Feinstein, Chicago, Illinois

The Saerree and Lois Fiedler Scholarship for Cancer Research, in memory of Lillian Hellman Kugler

Established in 1983 through the Saerree K. and Louis P. Fiedler Family Fund, Deerfield, Illinois

The Stephen W. Fleck Scholarship Fund

Established in 1995 through a bequest of Herta Fleck, New York

The Adolph Fogel and William Fogel Scholarship Fund

Established in 2001 through a bequest of William Fogel, New York

The Joseph F. and Clara Ford Foundation Scholarship in Perpetuity

Established in 1989 by the Joseph F. and Clara Ford Foundation, Boston, Massachusetts

The Jeremy and Judith Freedman PhD Scholarship in Diabetes Research

Established in 2015 by Jeremy and Judith Freedman, and friends of Weizmann Canada

Scholarship Awards

PhD Scholarships in Perpetuity

The Yeheshkel and Fruma Freedman Education Fund

Established in 2001 through a bequest of Isaac Freedman, Boston, Massachusetts

The Shulamith Friedland Memorial Master's Scholarship in Cancer Research

Established in 2016 by Sheldon Friedland, New Bedford, Massachusetts

The Violet, Samuel, and Anna Friedman Doctoral Scholarship Fund

Established in 2009 through a bequest of Violet Friedman, Palm Springs, California

The Regina and Leo Frisch Scholarships

Established in 2010 through a bequest of Rachel Lubell, New York

The Chaya Austern Fuchs Scholarships

Established in 2010 through a bequest of Rachel Lubell, New York

The Rita Gehl Scholarship in Cancer Research

Established in 1999 by Rita Gehl, London, United Kingdom

The Ellen and Mordechai (Heinz) Gilead (Gutfeld) Memorial Scholarship

Established in 2014 by Yohanan and Beile Gilead, Israel

The Yasha Gluzman Scholarship

Established in 1998 by Ilan Gluzman, Nutley, New Jersey

The Goldberg-Guild Scholarships

Established in 1984 by Bernard Goldberg, Hallandale, Florida, and by Irwin C. Guild, Palm Beach, Florida

The Morris and Rose Goldman Scholarship

Established in 1987 by Rose Goldman, Chicago, Illinois

The Linda, Tal, and Akiva Gross Endowment Fund, in Memory of Heinrich Gross

Established in 2007 by Akiva Gross, Glencoe, Illinois

The Leanora, Judith, and Samson Gruber Memorial Scholarships

Established in 1998 by Mr. and Mrs. Irving M. Gruber, New York, and named in memory of Mrs. Gruber and the Gruber children

The Herbert Leiser Harband Memorial Scholarship

Established in 1976 through bequests of Dorothea and Julius Harband, San Francisco, California, in memory of their beloved son

The Otto and Mary Hersch Scholarships in Perpetuity

Established in 1987 through a bequest of Mary Hersch, New York

The Lotte and Ludwig Heusinger Memorial Scholarship

Established in 1993 through a bequest of Dr. Ludwig Heusinger, Kfar Shmaryahu, Israel

The William T. Hogan and Winifred T. Hogan Scholarship

Established in 1997 by the International Brotherhood of Teamsters Local 714, Chicago, Illinois

The Abraham and Elena Kahn Scholarship Fund

Established in 2004 by Abraham and Elena Kahn, Mexico

The Morris Kahn Scholarships in Systems Biology

Established in 2011 by the Weizmann Institute of Science in honor of Morris Kahn, Israel

The John F. Kennedy Memorial Scholarship Fund

Established in 1965 by the John F. Kennedy Memorial Foundation, Rehovot, Israel

The Malcolm Kingsberg Memorial Scholarship

Established in 1972 through a bequest of Malcolm Kingsberg, New York

The Marcia S. and Michael H. Klein Scholarship for Autoimmune Diseases

Established in 2012 by Marcia and Michael Klein, Bloomfield Hills, Michigan

The Jeaninne Klueger Scholarship

Established in 1991 by Seraphina Klueger, Dusseldorf, Germany, in memory of her daughter

The Alex and Lilly Koron Scholarship

Established in 2008 through bequests of Alex and Lilly Koron, Chicago, Illinois

The Alexander E. Langsam Memorial Doctoral Scholarship

Established in 2001 by Florence Langsam, Rockville, Maryland

The Liselotte and Richard Laster Endowed Doctoral Scholarship in Brain Research

Established in 2001 by Mr. and Mrs. Richard Laster, Chappaqua, New York

The Harold J. Lawn, M.D. Scholarship Fund

Established in 1985 by Dr. Harold J. Lawn, St. Paul, Minnesota

The Lewis Family Scholarship

Established in 2013 by the Lewis Family Trust, Hackensack, New Jersey

The Sally and Jerome Lipper Scholarship Fund for Young Immigrants

Established in 1993 by the Kenneth and Evelyn Lipper Foundation, New York

The Bert and Etta Liss Scholarship

Established in 2011 through a bequest of Bert and Etta Liss

The Samuel and Eleanor London Scholarship

Established in 1986 through a bequest of Eleanor J. London, Los Angeles, California

The Dr. Saul and Rose Mackoff Doctoral Scholarship

Established in 2002 through a bequest of Dr. Saul Mackoff, Chicago, Illinois

The Sheldon J. Mandell Scholarship Fund in Cancer Research

Established in 2013 by Sheldon J. Mandell, Chicago, Illinois

The Rixi Markus Scholarships, in Memory of Eugenia, Ignacy, and Herbert Alfred Heller

Established in 1995 through a bequest of Rixi Markus, MBE, London, United Kingdom

Scholarship Awards

PhD Scholarships in Perpetuity

The Rodolfo May Scholarships

Established in 1997 through a bequest of Rodolfo May, Montevideo, Uruguay

Ralph Medjuck Ph.D. Scholarship

Established in 2016 by Ralph and Shirley Medjuck Charitable Foundation, Halifax, Canada

The Nora Menascé Scholarship in Cancer Research

Established in 2002 through a bequest of Nora Menascé, Milan, Italy

The Cecile Mory Scholarship Fund

Established in 2014 by Cecile Mory, Hollywood, Florida

The Paul and Felicia Muskat Scholarship Fund

Established in 1984 through a bequest of Paul Muskat, Toronto, Canada

The Gertrude and Valentin Nathan Scholarship Fund

Established in 1997 through a bequest of Gertrude Nathan, New York

The Oskar Oliven (Dr. of Engineering) Memorial Scholarship

Established in 2003 through bequests of Gerald and Hedy Oliven, Los Angeles, California

The Dora Ostre Memorial Scholarships

Established in 1987 through a bequest of Dr. Sprinzi Weizenblatt, Asheville, North Carolina

The Dr. Bruce A. Pearlman PhD Scholarship in Synthetic Organic Chemistry

Established in 2011 through a bequest of Dr. Bruce A. Pearlman, Michigan

The Linda and Richard Price Scholarship for Brain Research

Established in 2016

The Richard and Christine Purchas Scholarship

Established in 2008 by the Richard and Christine Purchas Charitable Trust, London, United Kingdom

The Rose Lee and Marvin Pomerantz Scholarship

Established in 1998 by Rose Lee and Marvin Pomerantz and friends, Des Moines, Iowa

The Theodore R. and Edlyn Racoosin Scholarship Fund

Established in 1993 through bequests of Theodore and Edlyn Racoosin, New York

The Denis Raeburn Scholarship

Established in 2014 by Denis Raeburn, United Kingdom

The Hirsch and Braine Raskin Foundation Scholarships

Established in 1970 by the Hirsch and Braine Raskin Foundation, New York

The Harry, Lillian, and Sylvan Ray Memorial Scholarship in Cancer Research

Established in 1997 by Dr. M. L. Ray, Dallas, Texas

The Reiter Family Scholarship

Established in 1984 by the Reiter Family Foundation, Chicago, Illinois

The Charles G. and Belle Reskin Doctoral Graduate Scholarship in Perpetuity

Established in 1997 through a bequest of Charles G. Reskin, Chicago, Illinois

The David Rich Doctoral Scholarship in Chemistry

Established in 1999 by Edra Rich, Phoenix, Arizona

The Burton and Sylvia Richards Doctoral Scholarship

Established in 1999 by Burton Richards, Bala Cynwyd, Pennsylvania

The Albert A. Robin Family Scholarship

Established in 2008 through a bequest of Albert A. Robin, Chicago, Illinois

The Gabriella and Paul Rosenbaum Scholarship in Biology

Established in 1999 by the Gabriella and Paul Rosenbaum Foundation, Chicago, Illinois

Scholarships in Memory of Harry Mlinov Rosenberg and Sarah Rudman Rosenberg

Established in 2008 through a bequest of Abraham Rosenberg, Rumson, New Jersey

The Joni Perlman Rosenberg Scholarship Fund for the Support of Cancer Research

Established in 2007 by the Harold L. Perlman Family Foundation, Chicago, Illinois

The Dr. Arnold Rosenblum Memorial Endowment Fund

Established in 1996 by Dorothy Rosenblum, Brooklyn, New York, in memory of her son

The Rose Frisch Sax Scholarships

Established in 2010 through a bequest of Rachel Lubell, New York

The Leon and Lily Schidlow Scholarship Fund

Established in 1999 by Sr. and Sra. Leon Schidlow, Bosques de las Lomas, Mexico

The Alice and Lewis Schimberg Scholarship Fund

Established in 1993 by Alice Schimberg, Chicago, Illinois

The Rudolf Schoenheimer Memorial Scholarships

Established in 1968 by Fritz Schoenheimer, New York

The Eugene and Lenore Schupak Endowed Doctoral Scholarship in Genetics

Established in 1997 by the Schupak Family Foundation, Scottsdale, Arizona

The David and Pauline Segal Scholarship

Established in 1999 by George and Joan Segal, Chicago, Illinois

The Bernard and Bernice Dorothy Segall Scholarship Fund

Established in 2006 through a bequest of Bernice Dorothy Segall, New York

The Simon and Frieda Senderowicz-Perel Graduate Student Research Fund

Established in 1999 through a bequest of Lea Senderowicz, Zurich, Switzerland

Scholarship Awards

PhD Scholarships in Perpetuity

The Hon. Sir David Sieff Doctoral Scholarship in Brain Research

Established in 2000 by family and friends, Weizmann UK

The Lily Sieff Doctoral Scholarship

Established in 1998 by Helen and Martin Kimmel, New York

The Rachel and Arnold Smith Endowed Scholarship

Established in 1996 by Rachel and Arnold Smith, Phoenix and Paradise Valley, Arizona

The Paula and Ernest Sommers Scholarship

Established in 2001 by Ernest Sommers, Chicago, Illinois

The Sylvia and Leonard Sorkin Scholarship

Established in 1997 through a bequest of Leonard Sorkin, Chicago, Illinois

The Eliezer and Genia (Chaine) Sotskover Scholarship

Established in 1992 through bequests of Eliezer and Genia (Chaine) Sotskover, Ramat Gan, Israel

The Blanche and Max Steig Memorial Scholarship Fund

Established in 1993 through a bequest of Blanche Steig, New York

The Gabriel Armand Stein Scholarship Fund

Established in 1991 by Paul Stein, Jackson Heights, New York, in memory of his son

The Jack, Gertrude, and Leesa Steinberg Doctoral Scholarship for Neurological Diseases

Established in 2009 by Leesa Steinberg, Hampstead, Canada

The Sergey and Maria Steuerman Endowed Scholarship Fund

Established in 1991 through a bequest of Maria Steuerman, New Rochelle, New York

The Armin and Etel (Angyal) Szolovits Doctoral Scholarship

Established in 2001 through bequests of Armin and Etel Szolovits, Hollywood, California

The Samara Jan Turkel Scholarship Fund for Autoimmune Diseases

Established in 1996 by Mr. and Mrs. Arthur Bach, New York, in memory of their granddaughter

The Guido Franklin van D. Memorial Scholarship

Established in 2000 by an anonymous donor

The Phyllis and Arthur Wachtel Scholarship Fund

Established in 2017 by Phyllis and Arthur Wachtel, Boca Raton, Florida

The Raoul Wallenberg Scholarship

Established in 1980 by the Swedish Committee and the Canadian Society for the Weizmann Institute of Science

The Paul and Greta Weinberger Scholarship

Established in 1995 through a bequest of Paul Weinberger, New York

The Ruth Ann and Sam Wolfson Scholarship

Established in 1996 by Ruth Ann and Sam Wolfson, Dallas, Texas

The Ruth Ann and Sam Wolfson Endowment for the Cure of Alzheimer's Disease

Established in 2001 by Sam Wolfson, Dallas, Texas

The Rubin and Gladys Wollowick Scholarship Fund for Autoimmune Disease Research

Established in 1999 by the Rubin and Gladys Wollowick Foundation, Miami, Florida

The Dr. Arthur Yarman and Gertrude Yarman Scholarship Fund

Established in 2003 through a bequest of Gertrude Yarman, Miami, Florida

The Ronald Zemell Memorial Doctoral Scholarship

Established in 2001 by Dr. and Mrs. David S. Papermaster, Bloomfield, Connecticut, in memory of Ronald Zemell

Scholarship Awards

Annual and Semester PhD Scholarships

The Nurit Barda Memorial Scholarship

Established in 2018 by Milvia Perinot, Switzerland

The Prof. Nira Ben-Jonathan PhD Scholarship in Cancer Research

Established in 2017 by Prof. Nira Ben-Jonathan, Cincinnati, Ohio

Lionel Black Scholarships

Established in 2018 by The Benson Black Memorial Charitable Trust, Manchester, United Kingdom

The Manfred Broder Memorial Scholarship

Established in 2014 in Manfred Broder's honor by the Weizmann Institute of Science

The Ronald M. Kantor Scholarship in Theoretical Physics

Established in 2011 by Evelyn Kantor, Bronx, New York

The James F. Kay Memorial Scholarship

Established in 2018 by Elaine Kay, Palm Beach, Florida and Toronto, Canada

The Jacob and Charlotte Lehrman Foundation Fellowship

Established in 2019 by the Jacob and Charlotte Lehrman Foundation, Washington, D.C.

The Joseph Meyerhoff Scholarship

Established in 1983 through the Joseph Meyerhoff Fund and the Rebecca Meyerhoff Fund, Baltimore, Maryland

The Rabin Family Scholarship Fund

Established in 2016 by Irving and Varda Rabin, Tiburon, California

The Ariane de Rothschild Women Doctoral Program at the Weizmann Institute of Science

Established in 2017 by the Edmond de Rothschild Foundations

Savitz Family PhD Scholarship in Cancer Research

Established in 2020 by the Alisa and Peter Savitz Foundation, Greenwich, Connecticut

Peter W. Schweitzer Scholarship Fund

Established in 2019 by the William P and Gertrude Schweitzer Foundation, New York

The Alessandro Simeoni Memorial Scholarship

Established in 2017 by Milvia Perinot, Switzerland

The Skolnick Family Charitable Trust Doctoral Scholarships

Established in 2006 by Mr. Allen Skolnick, Lynbrook, New York

Spira Annual PhD Scholarship

Established in 2019 by Jeannie Tanenbaum and Gary Spira, Toronto, Canada



Scholarship Awards

MSc Scholarships in Perpetuity

The I. W. Abel Scholarship

Established in 2002 by the United Steelworkers of America, Pittsburgh, Pennsylvania

The Henrietta and Jack Abrams Scholarship

Established in 1988 by Henrietta Abrams, Lauderhill, Florida

The Harry P. and Henrietta Albert Scholarship

Established in 1970 by the Alfred T. Stanley Foundation, New York, New York

The Egle Forti Ancona Scholarship in Perpetuity (The Dana Fund)

Established in 1993 through a bequest of Mrs. Egle Forti, Rome, Italy

The Harvey and Sandy Angell Master's Scholarship in Research for the Benefit of Children

Established in 2001 by Harvey and Sandy Angell, Chicago, Illinois

The Arizona Women and Science Scholarship

Established in 1996 by Arizona Friends of the Weizmann Institute of Science

The Eda and Leo Asseo Scholarship

Established in 1988 by Eda Asseo, Tel Aviv, Israel

The Israel W. and Fannie Backe Scholarship Fund

Established in 1987 through a bequest of Fannie Backe, Worcester, Massachusetts

The Lillian Baker Scholarship

Established in 1991 through a bequest of Lillian Baker, Hallandale, Florida

The Florence and Theodore Baumritter Scholarship Fund for Russian Students

Established in 1991 by Mr. and Mrs. Theodore Baumritter, Boca Raton, Florida

The J. Myron and Zachary Michael Bay Scholarship

Established in 1979 by Jerry Adler and friends, and the Mogen David Wine Corporation, Chicago, Illinois

The Mollie Freeman Becker Scholarship

Established in 1971 by Mrs. Samuel Becker, Newton, Massachusetts

The Shlomo and Rivka Benador Bursary in Perpetuity

Established in 1984 by Shlomo and Rivka Benador, Geneva, Switzerland

The Bendit Foundation Scholarship

Established in 2000 by Dr. and Mrs. Emile Bendit and the Bendit Foundation, Inc., Baltimore, Maryland

The Isabelle and David Bensadoun Master's Scholarship in Environmental/Alternative Energy Research

Established in 2013, Montreal, Canada

The Carolyn and Marvin Birger Scholarship

Established in 2000 by Marvin Birger, Palm Beach, Florida

The Dr. Henri H. Birnbaum Scholarship

Established in 1979 through a bequest of Dr. Henri H. Birnbaum, New York

The Abraham H. Blank Scholarship

Established in 1979 by Myron Blank, Des Moines, Iowa

The Benjamin M. Bloch Memorial Scholarship

Established in 1964 by the Faculty of the Weizmann Institute of Science, Rehovot, Israel

The Alex and Yudas (Yetta) Bloom Scholarship

Established in 1971 by Philip Bloom, New York

The Alan I. Bluestein Scholarship

Established in 1990 by Milton J. Bluestein, Palm Beach, Florida

The Alejandro y Dinorah Margounato Blum Scholarship

Established in 1986 by the Leon and Elena Blum Foundation, Montevideo, Uruguay

The Edith C. Blum Scholarship Fund

Established in 2007 by the Edith C. Blum Foundation, New York

The Louis C. and Edith B. Blumberg Scholarship Fund

Established in 1989 by the Louis Blumberg Foundation, Southfield, Michigan

The Bonder Family Scholarship Fund

Established in 1994 through the Leon Bonder Trust, Chicago, Illinois

The Dr. Louis D. Boshes and Natalie A. Boshes Endowed Master's Scholarship

Established in 2005 through a bequest of Dr. Louis D. and Natalie A. Boshes, Chicago, Illinois

Anne-Marie Boucher and Mitch Garber Scholarship Fund

Established in 2018 by Anne-Marie Boucher and Mitch Garber, Montreal, Canada

The Harold and Harriet Brady Master's Scholarship

Established through a bequest of Harriet Brady, Chicago, Illinois

The Joan and William J. Brodsky Scholarship in Photodynamic Cancer Therapy in Perpetuity

Established in 1995 by the Chicago Committee for the Weizmann Institute of Science, Chicago, Illinois

The Adele S. and Abraham Browner Scholarship in Biomedical Research

Established in 1999 through a bequest of Adele Browner, Chicago, Illinois

The Roel C. Buck Master's Scholarship in Nanotechnology Research

Established in 2010 by the Roel C. Buck Family Foundation, Canada

The Melva and Martin Bucksbaum Scholarship in Biomedical/ Cardiovascular Research

Established in 1996 in honor of Melva Bucksbaum and in memory of her husband, Martin, by family and friends, Des Moines, Iowa

Scholarship Awards

MSc Scholarships in Perpetuity

The John and Dana Burgess Scholarship in Biomedical Research

Established in 2000 by International Profit Associates, Buffalo Grove, Illinois

The Dr. Meyer Chapman Memorial Bursary

Established in 1971 through a bequest of Dr. Meyer Chapman, Chicago, Illinois

The Dr. Ida Golomb and Dr. Mordecai Chertoff Endowed Scholarship Fund in Alzheimer's and Brain Research

Established in 2015 through bequests of Dr. Ida M. Golomb and Dr. Mordecai S. Chertoff, New York

Aharon and Tova (Buena) Cohen Memorial Scholarship

Established in 2018 by their children

The Isidore and Theresa Cohen Scholarship

Established in 1973 by the Isidore, Theresa, and Ronald Cohen Charitable Trust, Cape Town, South Africa

The Cowen Semester Scholarship in Molecular Biology, in Memory of Belle and Leonard Cowen, and Sylvia and Irving Schwartz

Established in 1996 by Mr. and Mrs. Stephen A. Cowen, Tenafly, New Jersey, in memory of their parents

Scholarship in Biomedical Research in Memory of Richard J. Daley II

Established in 2002 by friends of William M. Daley, Chicago, Illinois

The Joseph and Sadie Danciger Scholarship

Established in 1987 by the Sadie Danciger Trust and the Joseph and Sadie Danciger Fund, Kansas City, Missouri

The Helen and Harry Hans Davis Memorial Scholarship

Established in 2002 through a bequest of Helen J. Davis, Wyncote, Pennsylvania

The Amos and Hortense Deinard Memorial Scholarship

Established in 1989 through a bequest of Hortense H. Deinard, Minneapolis, Minnesota

The Dekker Foundation Master's Scholarship

Established in 2011 by the Dekker Foundation, Weston, Connecticut

The Kitty Waas Dekker, Simon Waas, and Rosette Dekker Scholarship

Established in 1998 through a bequest of Rosette Dekker, United Kingdom

The Samuel Denmark Family Scholarship

Established in 2000 by the Samuel Denmark Family Philanthropic Fund, Scottsdale, Arizona

The Alan Dixon Scholarship in Cancer Research

Established in 1977 by the Hon. Alan J. Dixon, St. Louis, Missouri

The Jack and Simon Djanogly Scholarship in Perpetuity

Established in 1985 by Sir Harry Djanogly, London, United Kingdom

The Pearl and Morris Dry Scholarship

Established in 1966 by Sidney Dry, Chicago, Illinois

The Dr. Yehuda and Leah Dubowski Scholarship

Established in 1988 by Leah Dubowski, Kiryat Ono, Israel

The Batsheva and Joseph Eden Scholarship

Established in 2007 by Batsheva and Joseph Eden, Great Neck, New York

The Dr. Joshua and Helene Ehrlich Memorial Scholarship

Established in 1987 through a bequest of Helene Ehrlich, Miami, Florida

The Bella and Hyman Eisenbaum Scholarship

Established in 1994 through the Bella Eisenbaum Trust, Miami Beach, Florida

The Samuel and Bess Ekstein Master's Scholarship

Established in 2011 by Samuel Ekstein, Chicago, Illinois

The Alex Elovic Memorial Scholarship

Established in 1996 through a bequest of Bernat Elovic, Miami Beach, Florida

The Louis E. Emerman Scholarship in Biomedical Research

Established in 1999 by the Saul and Devorah Sherman Fund, Chicago, Illinois

The Charles I. and Fanny Engelstein Endowment Fund

Established in 1995 through a bequest of Fanny Engelstein, New York

The Bina and Icchak-Meir Erlich Fund

Established in 1987 through a bequest of their daughter Hanna Erlich, Bendzin, Poland

The Belle and Philip Feinberg Scholarship

Established in 1983 by Abraham Feinberg, New York

The Dr. Judith Schneider and Dr. E. Richard Feinberg Scholarship

Established in 1981 by Belle S. Meller, New York

The Lillian Feinberg Scholarship

Established in 1983 by Abraham Feinberg, New York

The Shirley and Judge Wilfred Feinberg Scholarship

Established in 1983 by Abraham Feinberg, New York

The Meyer Feldman Memorial Scholarship

Established in 1973 through a bequest of Meyer Feldman, Tucson, Arizona

The Joel Fellner and Gisella Schreiber Fellner and Ernest Ludwig Mannheimer and Arabella Weiss Mannheimer Scholarship Fund

Established in 1983 by the Leopold and Clara M. Fellner Charitable Foundation, Los Angeles, California

The Pauline and Maximilian Firestone Bursary

Established in 1978 by Maximilian Firestone, New York

Scholarship Awards

MSc Scholarships in Perpetuity

The Aaron and Zlata Fish Memorial Bursary

Established in 1980 by Mr. and Mrs. Abe Fish, Toronto, Canada

The Joseph E. and Rose Fisher Scholarship

Established in 1978 by Mr. and Mrs. Joseph E. Fisher, Canton, Ohio

The Rita Friedell and Donald Fiterman Scholarship

Established in 1969 by Mr. and Mrs. Morlan Fiterman, Highland Park, Illinois

The Sonia Floomberg Memorial Scholarship

Established in 1998 through a bequest of Sonia Floomberg, Montreal, Canada

The Alexander and Lilly Foldes Memorial Scholarship

Established in 1981 through a bequest of Lilly Foldes, New York

The Malcolm Fraser Scholarship in Medical Biology

Established in 1981 in honor of Malcolm Fraser by the Australian Association for the Weizmann Institute of Science

The Joyce and Joseph J. Freed Family Scholarship

Established in 1995 by Mr. and Mrs. Joseph Freed, Wheeling, Illinois

The Helen and Charles Friedman Scholarship Fund

Established in 1986 by Helen and Charles Friedman, Paradise Valley, Arizona

The William F. Fuerst Scholarship Fund

Established in 1989 through a bequest of Madeleine Fuerst, New York

The Margot and Alfred Furth - Regina Fleischer Scholarship in Chemistry

Established in 1992 through a bequest of Regina Fleischer, and by Alfred Furth, New York, in memory of his wife, Margot

The Naomi and Morris Futorian Scholarship

Established in 1994 by Naomi Futorian, Northbrook, Illinois

The Prof. Eugene Gadol Scholarship

Established in 2004 through a bequest of Prof. Eugene Gadol, Vienna, Austria

The Leo and Frances Gallin Scholarship

Established in 1994 by Leo and Frances Gallin, Los Angeles, California

The Florence Gambino Scholarship

Established in 2000 through a bequest of Florence Gambino, Chicago, Illinois

The Rachel and Herzl Getzler Scholarship

Established in 2008 by Gad and Talia Zeevi, Haifa, Israel

The Bessie and Barnet Ginsburg Memorial Scholarship

Established in 1971 by the Bessie and Barnet Ginsburg Memorial Foundation, Westhampton Beach, New York

The Israel, Sara, and L. Chester Glaser Scholarship

Established in 1975 through a bequest of L. Chester Glaser, New York

The Dr. Anna Goldfeder Scholarship

Established in 1994 through a bequest of Dr. Anna Goldfeder, New York

The Harry Goldman Memorial Scholarship

Established in 1975 through a bequest of Harry Goldman, New York

The Morris and Rose Goldman Scholarship Fund

Established in 1996 by Rose Goldman, Chicago, Illinois

The Richard and Rhoda Goldman Scholarship

Established in 1982 by Mr. and Mrs. Richard Goldman, San Francisco, California

The Samuel L. and Rebecca R. Goldstein Bursary

Established in 1977 through a bequest of Samuel Goldstein, Lynn, Massachusetts

The Phillip and Beverly Goldstick Scholarship

Established in 1980 by Phillip C. Goldstick, Chicago, Illinois

The John P. Gomme and Fruma Steinmetz Fund

Established in 2011 by the Britto Foundation, London, United Kingdom

The Dorothy and Maurice Gordon Scholarship

Established in 1968 by Centrose Associates, Boston, Massachusetts

The Ethel and Anne Gordon Scholarship

Established in 1990 through a bequest of Ethel Y. Gordon, New York

The Helena F. and Jacob Y. Gordon Scholarship

Established in 1973 by Mrs. Jacob Y. Gordon, Newton, Massachusetts

The William and Mildred Gosden Scholarship Fund in Honor of the Gosden Family

Established in 2005 by Mildred Gosden, Sun City, Arizona

The Salomon and Augusta Gottfried Scholarship

Established in 1997 by Kurt and Sorel Gottfried, Ithaca, New York, in memory of Dr. Gottfried's parents

The Victor Graber Memorial Scholarship

Established in 1999 by David Graber, Alameda, California

The Harold J. and Marion Green Scholarship in Perpetuity

Established in 1970 by Mr. and Mrs. Harold J. Green, Chicago, Illinois

The Jules R. Green Scholarship in Perpetuity

Established in 1980 by Jules R. Green, Chicago, Illinois, in memory of his wife, Rose, and son, Michael Jay Green

The Scott David Greenberg Scholarship in Physics Research

Established in 2001 by Scott D. Greenberg, Buffalo Grove, Illinois

The Nandor F. Gross Scholarship

Established in 1982 through a bequest of Kalman Gross, New York

Scholarship Awards

MSc Scholarships in Perpetuity

The Isadore and Bertha Gudelsky Family Scholarship Endowment Fund

Established in 1979 by the Isadore and Bertha Gudelsky Family Foundation, Potomac, Maryland

The Haas Family Scholarship in Scientific Research

Established in 2007 by Dr. and Mrs. David Haas, Suffern, New York

The David Halberstadt Scholarship

Established in 2013 by his wife Hannah and his daughters Simone and Michèle, France

The Dr.-Ing. Jerzy Hanowski Scholarship

Established in 1992 through a bequest of Lola Hanowski, Aachen, Germany

The Harman Stieglitz Scholarship

Established in 2013 by the Harmstiegl Foundation, Englewood, New Jersey

The Heinrich and Gisa Blum Harpuder Memorial Scholarship

Established in 1982 through a bequest of Heinrich Harpuder, Bronx, New York

The B. J. Harris Scholarship

Established in 1970 by B. J. Harris, Palm Beach, Florida

The Gertrude and Benjamin R. Harris Scholarship

Established in 1989 through bequests of Gertrude and Benjamin R. Harris, Chicago, Illinois

The Harry Julius Harris Scholarship

Established in 1997 through a bequest of Dorothy Harris and by Anne Ingber, New York

The Joan W. and Irving B. Harris Scholarship in Brain Research

Established in 1997 by friends and supporters, Chicago Committee for the Weizmann Institute of Science, Chicago, Illinois

The Dr. Esther Hellinger Memorial Scholarship

Established in 1986 through a bequest of Dr. Esther Hellinger, London, United Kingdom

The Carylon and Julius L. Hemmelstein Scholarship in Perpetuity

Established in 2001 by the Carylon Foundation, Chicago, Illinois

The Barry Hershman and Barbara Isaacson Scholarship in Biomedical and Cancer Research

Established in 2001 by Barry Hershman, Des Plaines, Illinois

The Al Hertz Memorial Master's Scholarship in Melanoma and Related Cancers Research

Established in 2013 by Elise Hertz, Toronto, Canada

The Fay and Harry Hoffman Scholarship

Established in 1982 by Harry Hoffman, family and friends, Chicago, Illinois

The Benjamin S. Hornstein Scholarship Fund

Established in 1989 through a bequest of Benjamin S. Hornstein, New York

The Anna Hurwitz Scholarship in Perpetuity

Established in 1983 by Allan Hurwitz, Chicago, Illinois

The Evelyn and Harold Igdaloff Scholarship Fund

Established in 2007 by Mr. and Mrs. Harold Igdaloff, Los Angeles, California

The Fanny E. and Lewis J. Isaacs Scholarship

Established in 1989 through the Fanny E. Isaacs Living Trust, Glencoe, Illinois

The Thomas and Ruth Isackson Memorial Scholarship Award

Established in 1992 through a bequest of Ruth Isackson, Miami Beach, Florida

The Samuel and Anna Jacobs Scholarship Fund

Established in 2015 by the Samuel and Anna Jacobs Foundation, Inc., New York

The Ruth Jansen Family Scholarship

Established in 2015 through the estate of Ruth Jansen, Montreal, Canada

The Judith Kaplan Master's Scholarship in Perpetuity

Established in 2013 by the Judith Anne Kaplan Fund of RSF Social Finance, Sonoma, California

The Barbara and Jon M. Kaufman Scholarship in Particle Physics

Established in 2008 by Jon M. Kaufman, New York

The Benjamin Kaufman Memorial Scholarship

Established in 1995 by Nathan Jacobs, New York

The Bruce and Joëlle Kent Master's Scholarship in Neuroscience Research with a focus on Mental Health

Established in 2013, Montreal, Canada

The Annie and Armand Kessous Master's Scholarship in Mathematics and Computer Science Research

Established in 2013, Montreal, Canada

The Udi Khazam Memorial Scholarship

Established in 1996 by the Khazam Family, London, United Kingdom, and Vancouver, Canada

The Nora Lifschultz Bergman and Edward Klein Scholarship in Biomedical Research

Established in 1998 by Edward Klein, Rancho Mirage, California, and S. Nora Bergman, Chicago, Illinois

The Neil David Konheim Memorial Scholarship

Established in 1985 by George Konheim, Beverly Hills, California

The Arthur Konviser Memorial Scholarship in Cancer Research

Established in 2007 by Dr. Eudice Goldberg and friends, Toronto, Canada

The Dr. David Kopel Scholarship in Perpetuity

Established in 1997 through a bequest of Dr. David Kopel, Chicago, Illinois

Scholarship Awards

MSc Scholarships in Perpetuity

The Richard Koret Scholarship
Established in 1968 by the trustees of the Richard Koret Foundation, New York

The Joseph Korodi Memorial Scholarship
Established in 1993 by Emmy Singer, Hamilton, Canada

The Alex and Lilly Koron Scholarship
Established in 2008 through bequests of Alex and Lilly Koron, Chicago, Illinois

The Frank Korrick Scholarship
Established in 1991 through a bequest of Francis Charles Korrick, Sydney, Australia

The Esther B. and Milton J. Krainin Master's Scholarship
Established in 2006 by Dr. Milton J. Krainin, Atlanta, Georgia

The Margaret S. Kramer Scholarship
Established in 1999 by Margaret S. Kramer, Palm Beach, Florida

The Samuel and Ronnie Kraut Scholarship in the Life Sciences
Established in 1988 by Ricky Kraut through bequests of her parents, Samuel and Ronnie Kraut, Winnipeg, Canada

The David and Chana Krelenbaum Memorial Scholarship for Research in Autoimmune Diseases
Established in 2018 by Marilyn Krelenbaum, Montreal, Canada

The Edward C. and Linda Dresner Levy Foundation Master's Scholarship
Established in 2010 by Edward C. and Linda Dresner Levy, Detroit, Michigan

The Anne P. Lederer Master's Scholarship in Brain Research
Established in 1998 by the Anne P. Lederer Research Institute, Chicago, Illinois

The Philmore A. and Judith Leemon Scholarship in Brain Research
Established in 1997 by Philmore A. and Judith Leemon, Las Vegas, Nevada

The Dr. Aaron M. Lefkovits Scholarship Fund Bursary
Established in 1986 by Dr. Aaron Lefkovits, Memphis, Tennessee

The Dr. Sophie N. Leschin Scholarship Fund
Established in 1985 through a bequest of Dr. Sophie N. Leschin, Chicago, Illinois

The Eudyce H. Levin Scholarship in Cancer Research
Established in 1984 by Wallace "Bud" Levin, North Miami Beach, Florida

The Wallace S. Levin Scholarship Fund
Established in 1997 by Mark Levin, Davie, Florida

The Chaim Michel and Chaya Freyda Levine Scholarship, established by their son, Jules Lawren
Established in 1995 through a bequest of Jules Lawren, New York

The Irena and Morris Goldstein and Stefan Joram Lewari Memorial Scholarship
Established in 1988 through a bequest of Irena Lewari, Cape Town, South Africa

The Morris I. Lewisohn Scholarship
Established in 1976 through a bequest of Morris I. Lewisohn, Teaneck, New Jersey

The Leyfell Family Master's Scholarship
Established in 2001 by Mr. and Mrs. Aleksander Leyfell, Cambridge, Massachusetts

The Dorothy and Elias Lieberman Memorial Scholarship
Established in 1972 by the Elias Lieberman Memorial Foundation, Jamaica, New York

The Jacob P. and Estelle Lieberman Scholarship
Established in 1990 by the International Fund for Education and Career Development, Tel Aviv, Israel

The Terri and Barry Lind Scholarship for New Scientists Specializing in Cancer Research
Established in 2004 by Mr. and Mrs. Barry J. Lind, Chicago, Illinois

The Yehoshua, Rachel, and Irit Linda Scholarship in Alzheimer's Disease Research
Established in 2014 through a bequest of Yehoshua Linda, Rehovot, Israel

The Abe Lisan Educational Grant Bursary
Established in 1974 through a bequest of Abe Lisan, Glenside, Pennsylvania

The Bert and Etta Liss Scholarship
Established in 2011 through a bequest of Bert and Etta Liss

The Meyer Loomstein Scholarship
Established in 1982 by Meyer Loomstein, Hollywood, Florida

The Josef and Avraham (Avi) Isser Luchfeld Memorial Bursary
Established in 1986 by Mr. and Mrs. Josef Luchfeld, Montreal, Canada

The Lou and Miriam Ludwig Scholarship
Established in 1974 through a bequest of Louis Ludwig, New York

The Sir Jack and Lady Roslyn Lyons Memorial Scholarships
Established in 2015 through the Rosjac Foundation by their children Jonathon Lyons and Patricia Maude-Roxby-Montalto, Switzerland

The Henry and Louis Malakoff Scholarship Fund, New Rochelle, New York
Established in 1991 by Rebecca Malakoff, Brooklyn, New York

The Judd D. Malkin Scholarship in General Biomedical Research
Established in 2004 by Judd Malkin and Barry Malkin, Chicago, Illinois

The Alexander and Mary Margolis and Bernard A. Margolis Perpetual Memorial Scholarship Fund
Established in 1993 through a bequest of Bernard A. Margolis, Brooklyn, New York

Scholarship Awards

MSc Scholarships in Perpetuity

The Ben and Ruth Marks Scholarship

Established in 1990 by Ben and Ruth Marks, North Miami Beach, Florida

The Judge Abraham Lincoln Marovitz Scholarship for the Study of Aging

Established in 1996 by friends of the late Hon. Judge Abraham Lincoln Marovitz, Chicago, Illinois

The Joory Mashal Bursary

Established in 1981 by Joory and Doreen Mashal, Montreal, Canada

The Samuel Mayer Bursary

Established in 1973 by Elsie Mayer, Santa Monica, California

The Joseph and Mable E. Meites Scholarship Fund

Established in 1983 by Joseph and Mable E. Meites, Okemos, Michigan

The Nora Menascé Scholarship in Cancer Research

Established in 2002 through a bequest of Nora Menascé, Milan, Italy

The Martin and Dianne Mendoza Scholarship

Established in 1991 in honor of Martin and Dianne Mendoza by friends and admirers, London, United Kingdom

The Leo Meyer Scholarship

Established in 1965 through a bequest of Leo Meyer, San Francisco, California

The Dr. Bert Migicovsky Scholarship

Established in 1990 by the Ottawa Jewish Community, Ottawa, Canada

The Minzer Family Fund Scholarship

Established in 1978 by Margaret and Sol Minzer, Dallas, Texas

The Pola and Elias Mirson Scholarship

Established in 1989 through a bequest of Pola Mirson, Buenos Aires, Argentina

The Paul and Felicia Muskat Scholarship Fund

Established in 1984 through a bequest of Paul Muskat, Toronto, Canada

The Inez P. and David N. Myers Scholarship

Established in 1981 by the David and Inez Myers Scholarship Fund, Cleveland, Ohio

The Fanny Fletcher and Meyer Naxon Memorial Scholarship in Perpetuity

Established in 1984 through a bequest of Meyer Naxon, Beverly Hills, California

The Clara and Bela B. Nevai Scholarship

Established in 1972 by Mr. and Mrs. Bela B. Nevai, Dobbs Ferry, New York

The Dr. Louis B. and Rose M. Newman Scholarship

Established in 1971 by Dr. and Mrs. Louis B. Newman, Chicago, Illinois

The Charles and Denise Noparstak Master's Scholarship

Established in 2010 by Charles and Denise Noparstak, Northbrook, Illinois

The Harold Paul Novick Scholarship in Perpetuity

Established in 1982 by Mr. and Mrs. Samson Novick, New York

The Cemach Oiserman Scholarship Fund

Established in 1999 through the offices of Yehuda Assia, Geneva, Switzerland

The Olmert/Burckin Scholarship Fund

Established in 2017 by Carol Olmert and Dr. Alan P. Burckin, Walnut Creek, California

The Walter Pancoe Scholarship

Established in 1992 by Walter Pancoe, Chicago, Illinois

The Cecile and Ben Pekin Scholarship

Established in 2002 by Cecile and Ben Pekin, Highland Park, Illinois

The Gertrude and Ivar Philipson Bursary

Established in 1961 through bequests of Gertrude and Ivar Philipson, Stockholm, Sweden

The Rose and Israel Pincus Bursary in Perpetuity

Established in 1987 by William B. Ingram, Laguna Hills, California

The Harry and Evelyn F. Platoff Memorial Bursary

Established in 1975 through a bequest of Evelyn F. Platoff, Miami Beach, Florida

The Edith and Henry Plessner Scholarship

Established in 1991 through a bequest of Edith Plessner, New York

The David and Janet Polak Scholarship

Established in 1997 by Mr. and Mrs. David Polak, Beverly Hills, California

The David Pollin Revolving Scholarship Fund

Established in 2000 through a bequest of Dan Pollin, Fort Lauderdale, Florida

The Sidney L. and Betty B. Port Scholarship in Perpetuity

Established in 2003 by Sidney L. Port, Chicago, Illinois

The Alfred Prager Scholarship in Perpetuity

Established in 1970 by the American Committee for the Weizmann Institute of Science, and through a bequest of Alfred Auerbach, New York

The Brothers Moses and Meyer Pupko Trust Fund Bursary

Established in 1971 through a bequest of Abraham Pupko, Seattle, Washington

The Rona and David Radler/Sun Times Scholarship in Biomedical Research

Established in 1997 in honor of F. David Radler by the Chicago Committee for the Weizmann Institute of Science, Chicago, Illinois

The Ruth Epstein Recu Scholarship

Established in 1980 by Ruth Recu, Chicago, Illinois

The Harry and Mildred Remis Scholarship

Established in 1973 by Mr. and Mrs. Harry Remis, Peabody, Massachusetts

Scholarship Awards

MSc Scholarships in Perpetuity

The Anna and Max Resnick Scholarship

Established in 1996 by Howard Resnick, Chicago, Illinois

The Prof. David Rittenberg Memorial Bursary

Established in 1971 in memory of her husband by Mrs. S. Rittenberg and friends, New York

The Aida and Jerome Robinson Scholarship Endowment Fund

Established in 2003 by Jerome and Aida Robinson, Fort Lee, New Jersey

Bianca and Stuart Roden Scholarship

Established in 2016 by the Roden Family Foundation, London, United Kingdom

The Lillian L. Rolde Memorial Scholarship

Established in 1981 by L. Robert Rolde, Boston, Massachusetts

The Dorothy and Irving Rom Scholarship

Established in 1990 by the Irving and Dorothy Rom Charitable Trust, Chicago, Illinois

The Ben and Esther Rosenbloom Foundation Scholarship

Established in 1990 by Ben and Esther Rosenbloom, Baltimore, Maryland

The Charles J. Rosenbloom Memorial Bursary

Established in 1973 through a bequest of Charles J. Rosenbloom, Pittsburgh, Pennsylvania

The Isidore Rosenkrantz Scholarship

Established in 1960 through a bequest of Isidore Rosenkrantz, St. Paul, Minnesota

The Lili Rosenthal Scholarship

Established in 2016 through the estate of Dr. Lili Rosenthal, Sweden

The Anna and Leo Rosner Scholarship

Established in 1986 by the Leo Rosner Endowment Fund, Miami Beach, Florida

The Celia and Nelson Rostow Scholarship

Established in 1987 through a bequest of Nelson Rostow, New Haven, Connecticut

The Sara Rottenberg Scholarship in Cancer Research

Established in 1994 by Sophie Kalina, New York, in memory of her mother

The Rachelle Rubin (nee Blecher) Scholarship

Established in 1991 by Rachelle Lea Rubin, Dusseldorf, Germany

The David and Eleanore Rukin Scholarship

Established in 1981 by the David and Eleanore Rukin Philanthropic Foundation, Saddle River, New Jersey

The Rymer Family Scholarship

Established in 1986 by the Barry Rymer Trust, Chicago, Illinois

The Ann B. Sadowsky Scholarship

Established in 1987 through a bequest of Ann Sadowsky, Mineola, New York

The Dr. Alexander Salamon Memorial Endowment Fund

Established in 2006 by Lilly Salcman, Julie Salamon, and Dr. Suzanne Salamon, Florida, New York, and Massachusetts

The Bernard and Edith Samers Scholarship in Cancer Research

Established in 1997 in honor and in memory of Bernard Samers, former Executive Vice President, American Committee for the Weizmann Institute of Science, New York

The Marvin Sands Endowed Master's Scholarship Fund

Established in 2003 in honor of Marvin Sands by South Florida Friends of the Weizmann Institute of Science

The Elsie Olin and Philip D. Sang Scholarship

Established in 1995 by Elsie Olin Sang, Chicago, Illinois

The Jerome D. and Beverly Scheer Scholarship

Established in 1989 by Jerome D. and Beverly Scheer, Potomac, Maryland

The Sylvia and Aaron Scheinfeld Scholarship

Established in 1976 by Mrs. Aaron Scheinfeld, Chicago, Illinois

The Harry and Mae Schetzen and Prof. Martin Schetzen Scholarship

Established in 1979 by Mae Schetzen, New York

The Dr. Oskar and Sally Schickler Scholarship Fund

Established in 2007 through a bequest of Dr. Oskar Schickler, Montreal, Canada

The Ida and Abraham Schneider Scholarship

Established in 1968 by Abraham Schneider, Palm Beach, Florida

The Max Schoenfeld Scholarship

Established in 1976 by Walter E. Schoenfeld, Seattle, Washington

The Stuart and Sarah Schulman Scholarship Fund

Established in 1991 by Dr. and Mrs. Stuart Schulman, Boca Raton, Florida

The Joseph Schumer Scholarship

Established in 1964 through a bequest of Joseph Schumer, New York

The Rabbi Samuel and Charlotte Schwartz Scholarship

Established in 1981 by their son James L. Schwartz, Highland Park, Illinois

The Segal Scholarship in Biomedical Research

Established in 2000 by Joan and George I. Segal, Chicago, Illinois

The Henry and Soretta Shapiro Master's Scholarship

Established in 1996 by the Soretta and Henry Shapiro Family Foundation, Chicago, Illinois

The Sabina D. and Benjamin Shapiro Scholarship Fund

Established in 1999 through a bequest of Sabina D. Shapiro, New York

The Ruth and Leonard Simon Scholarship in Leukemia/Cancer Research

Established in 1999 by Ruth Simon, Wilmette, Illinois

Scholarship Awards

MSc Scholarships in Perpetuity

The Rochelle and Harold Simpson Scholarship

Established in 2003 by Harold and Rochelle Simpson, Delray Beach, Florida

The Irving I. Singer Foundation Scholarship

Established in 1974 by the Irving I. Singer Foundation, New York

The Yvette Slotnick Scholarship Fund

Established in 1998 by Rhea Slotnick, Margate, Florida

The Sabine and Jeremy Smouha Scholarship

Established in 2007 by Mr. and Mrs. Jeremy Smouha, London, United Kingdom

The Rabbi and Mrs. Aaron Solomon Bursary

Established in 1982 by Dr. Jonathan G. Solomon, Hampton, Virginia, in honor of his parents

The Paula and Ernest Sommers Scholarship

Established in 1998 by Ernest Sommers, Chicago, Illinois

The Hazel and David Spatz Scholarship

Established in 2000 by the Spatz Family Foundation, Chicago, Illinois

The Samuel J. Spector and Augusta Spector Bursary

Established in 1978 through a bequest of Augusta Spector, New York

The Blanche and Max Steig Memorial Scholarship Fund

Established in 1993 through a bequest of Blanche Steig, New York

The Oscar H. Stern Memorial Scholarship

Established in 1976 through a bequest of Oscar H. Stern, New York

The Sheri Hirschfield Stone and David E. Stone Scholarship for Stem Cell Research

Established in 2013 by David and Sheri Stone, Coral Gables, Florida

The Leo and Rachel Sussman Scholarship Fund

Established in 2008 through a bequest of Rachel Sussman, Garden City, New York

The Roy L. Swarzman Scholarship in Perpetuity

Established in 1990 by Matthew Bucksbaum, Marvin Pomerantz, and Mr. and Mrs. Stanley Isaacson, Des Moines, Iowa

The Swiss Society of Friends of the Weizmann Institute of Science Scholarship in Perpetuity

Established in 1985 by the Swiss Society of Friends of the Weizmann Institute, Zurich, Switzerland

The Nachman Syrkin and Mendel Osnos Scholarship

Established in 1999 by Drs. Morton G. and Zivia Wurtele, Berkeley, California

The Armin and Etel (Angyal) Szolovits Master's Scholarship

Established in 2001 through bequests of Armin and Etel Szolovits, Hollywood, California

The Isaac H. Taylor Scholarship

Established in 1972 by Isaac H. Taylor, Ellicott City, Maryland

The Yael and Rami Ungar Master's Scholarship in Perpetuity

Established in 2010 by Rami and Yael Ungar, Israel

The Werner and Daughter Renee Usansky Memorial Bursary

Established in 1982 by Sra. Sara Z. de Usansky, Buenos Aires, Argentina

The Minnie and Arthur Vare Scholarship

Established in 1968 by the Minnie and Arthur Vare Foundation, New York

The Rose and Ben N. Vollen Scholarship

Established in 1993 through a bequest of Ben N. Vollen, Chicago, Illinois

The Wagner-Braunsberg Family Foundation Scholarship Fund

Established in 2008 by Mr. and Mrs. Peter Wagner, and Elizabeth Wagner, Rockville, Maryland

The Norma Walk Memorial Scholarship

Established in 1971 through a bequest of Norma Walk, New York

The George Wasserman Family Foundation/Janice Wasserman Goldsten Scholarship

Established in 1994 by the George Wasserman Foundation, Inc. and by Janice Wasserman Goldsten, Washington, D.C.

The Dr. Edgar Weil Memorial Bursary

Established in 1975 by an anonymous donor, Los Angeles, California

The Charles Weinfeld Memorial Scholarship

Established in 1972 by the Charles Weinfeld Trust, Northbrook, Illinois

The Celeste and Joseph Weingarten Memorial Scholarship

Established in 1987 by Nancy Weingarten and friends, Boston, Massachusetts

The Edythe and Samuel Weinstein Scholarship

Established in 2002 by the Samuel Weinstein Family Foundation, Niles, Illinois

The Irving Weinstein Foundation Master's Scholarship Fund

Established in 2016 by the Irving Weinstein Foundation, New York, New York

The Joe and Celia Weinstein Master's Scholarship in Perpetuity

Established in 1995 by Major Max and Sylvia Shulman, New York

The Dr. Lee Franklin Weinstock Leadership Scholarship

Established in 1994 through a bequest of Dr. Lee Franklin Weinstock, Detroit, Michigan

The Samuel Wendorf Bursary for the Feinberg Graduate School

Established in 2001 through a bequest of Samuel Wendorf, Milwaukee, Wisconsin

The Sarah Werch Research Scholarship Fund

Established in 1994 by the Solomon Carl Werch Trust, Chicago, Illinois

Scholarship Awards

MSc Scholarships in Perpetuity

The J. Stanley and Rose Weyman Memorial Scholarship

Established in 1997 by Anne Weyman, London, United Kingdom

The Estelle White Memorial Scholarship Fund

Established in 2001 through a bequest of Estelle White, New York

The G. Pauline Whiteman Scholarship Fund

Established in 2005 through a bequest of Pauline Whiteman, San Francisco, California

The William W. Wilkow Scholarship Fund

Established in 1987 by Mrs. William W. Wilkow, Chicago, Illinois

The Dr. Albert and Blanche Willner Scholarship for Russian Students

Established in 1993 by Dr. and Mrs. Albert Willner, Delray Beach, Florida

The Women of Vision Scholarship Fund for Breast and Ovarian Cancer Research

Established in 1996 by friends and supporters, South Florida Committee for the Weizmann Institute of Science

The Milton Young Memorial Bursary

Established in 1980 by friends of Milton Young, New York

The Alice Zacharia Scholarship

Established in 1983 by Madame Alice Zacharia, Paris, France

The Louis and Celia Zeibell and Ida Zeibell Scholarship in Perpetuity

Established in 1995 by Jack Zeibell, Chicago, Illinois

The Zekelman Scholarship Fund

Established in 2017 by Alan Zekelman, Bloomfield Hills, Michigan

The William N. Zinn Endowed Master's Scholarship

Established in 2003 by Robert Zinn, Houston, Texas, and Natalie Zinn Haar, Cambridge, Massachusetts

The Samuel Zonne Semester Scholarship

Established in 1980 through a bequest of Samuel Zonne, Minneapolis, Minnesota

The Lillian and Samuel L. Zuckerman Bursary

Established in 1959 by the Zuckerman family, New York, in honor of their parents' golden wedding anniversary

Scholarship Awards

Annual and Semester MSc Scholarships

The Erma and Allan Blumenfeld Scholarship

Established in 2017 by Erma Blumenfeld, Toronto, Canada

The Miriam and Arthur Diamond Scholarship

Established in 2018 by the Miriam and Arthur Diamond Charitable Trust, New York

The David Himmelberg Foundation Scholarship

Established in 2014 by the David Himmelberg Foundation, New York

The Jorge Kassel Scholarship in the Earth Sciences

Established in 1990 by Jorge Kassel, Naucalpan, Mexico

Langleben Scholarship Fund

Established in 2017 by Dr. Adrian Langleben, Montreal, Canada

The Anna and Isidore Roseman Foundation Awards

Established in 1985 by the Anna and Isidore Roseman Foundation, Reading, Pennsylvania

Steven Ross Memorial Scholarship

Established in 2018 by Ilene and Jeff Nathan and family and friends, Southern California

